

Sewing Pattern — Vest 4273

Recommendations on fabric: natural / mixed knitted fabric of medium stretchiness.

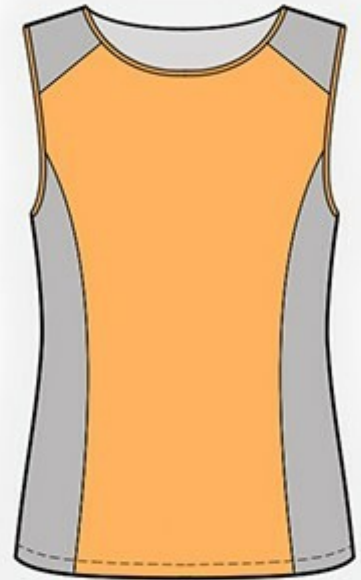
If the pattern has double contour the seam allowances are included.

Seam allowances are NOT included by default and need to be added when laying out and cutting details if your pattern has single contour.

Seam allowance: hem – 1.5 cm, all other seams -1 cm

Attention! First of all please print all the paper patterns and lay them out at the width of fabric you plan to use (usually from 90 to 150 cm) to see how much fabric you will need. Don't forget to count pair parts and symmetrical parts.

When sewing the garment, pay attention to notches, they must coincide.



CUTTING:

Fabric:

1. Back part – 1 detail
2. Central front part – 1 detail
3. Side front part – 2 details
4. Yoke – 2 details

Advice:

Knitted fabric details are sewn together with special elastic or narrow zig-zag stitch. When serging cut seam allowances to 0.6 – 0.8 cm. Seam allowance on turnout is stitched with twin needles to save stretchiness.

INSTRUCTIONS:

1. Stitch side front part to central one. Serge seams and press them towards center. Stitch yoke to front part. Serge seam allowances and press them downwards. Stitch yoke to back part from the right side. Serge seam allowance and press it downwards.
2. Cut bias tape of 4 cm wide, and as long as neckline. Fold the bias tape in half wrong sides together and press. Put the bias tape onto wrong side of neckline and stitch. Turn onto right side and topstitch. Stitch left side of the yoke. Serge seam allowance and press it towards back part. Make barred end on neckline at yoke connecting seam level.

3. Cut bias tape of 4 cm wide, and as long as the armhole. Fold the bias tape in half wrong sides together and press. Put the bias tape onto wrong side of the armhole and stitch. Turn onto right side and topstitch. Sew side seams. Serge seam allowances and press them towards back part. Make barred end on armhole at side seam level.
4. Serge hem of garment, lower edge of sleeve. Fold to wrong side, press and topstitch.

TECHNICAL DRAWING:

