

## Long Jacket - Sewing Pattern #2467

Recommendations on fabric: natural/mixed suiting fabrics.

You will also need: fusible interfacing; shoulder pads.

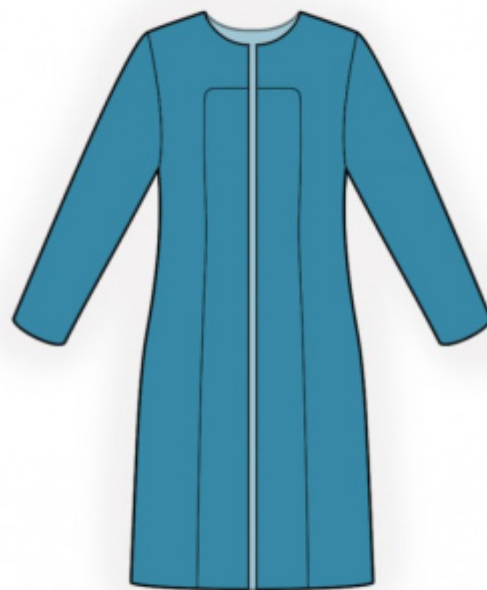
Seam allowances: all seams 1 cm. Seam allowance for hem of garment and hem of sleeve - 3.0 cm.

### Note on seam allowances:

- If the pattern has double contour the seam allowances are included. They are 1 cm unless specified otherwise.
- If the pattern has single contour, the seam allowances are NOT included and need to be added when laying out the pattern.

### Note on length of fabric:

*Attention! The amount of fabric needed for your pattern is not included. It will depend on the selected pattern size, the width, and design of the fabric you plan to use. First, print all the paper patterns and lay them out at the width of fabric you plan to use (usually from 90 to 150 cm). Measure how much fabric you will need. Don't forget to account for pieces that need to be cut multiple times and pieces that are cut on the fold.*



## CUTTING:

### Note on cutting:

*On the pattern pieces, "beam" means straight of grain. Lay out your pieces accordingly. Some pieces will be cut on the fold. This is noted on the pattern piece. Mark all notches and other design features such as pleats etc. from the pattern onto your fabric.*

*When sewing the garment, pay attention to notches, they must match up.*

Main fabric:

1. Back - cut 2
2. Side front - cut 2
3. Center front - cut 2
4. Center front facing - cut 2
5. Back neck facing - cut 1
6. Sleeve - cut 2

Fusible interfacing:

1. Center front facing – cut 2
2. Back neck facing – cut 1

## **INSTRUCTIONS:**

1. Apply fusible interfacing. Apply additional tape of fusible interfacing along front neckline.
2. Sew dart on back. Press bulk towards center. Sew, serge and press apart center back seam.
3. Sew side front to front. Clip into curves. Serge and press towards the side piece.
4. Sew shoulder and side seams. Serge seams and press towards back.
5. Sew side seams of back neckline facing and buttonstands, press seam apart. Serge outer edge. Pin center front facings onto garment and sew center edges and neckline with one continuous seam. Seam Allowances trim away corners, clip into curves, turn garment right side out, press. Slipstitch the facing and center front facings to shoulder seams and center back edge.
6. Sew sleeve seam. Serge and press towards back. Sew sleeves into armholes matching notches, adjusting ease along upper side of sleeve cap. Sew shoulder pads.
7. Serge the seam allowances for hem of garment and hem of sleeve, fold inside onto wrong side and topstitch.

## **TECHNICAL DRAWING:**

