

Dress With Decorative Princess Seam - Sewing Pattern #2282

Recommendations on fabric: natural/mixed fabric suitable for dresses.

You will also need: fusible interfacing; 5 buttons.

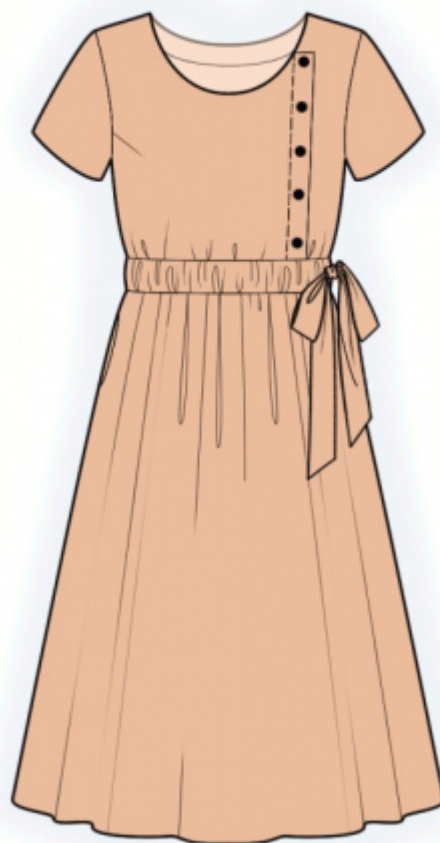
Seam allowances: seam allowance for hem of garment and hem of sleeve — 1.5 cm, other seams 1 cm.

Note on seam allowances:

- If the pattern has double contour the seam allowances are included. They are 1 cm unless specified otherwise.
- If the pattern has single contour, the seam allowances are NOT included and need to be added when laying out the pattern.

Note on length of fabric:

Attention! The amount of fabric needed for your pattern is not included. It will depend on the selected pattern size, the width, and design of the fabric you plan to use. First, print all the paper patterns and lay them out at the width of fabric you plan to use (usually from 90 to 150 cm). Measure how much fabric you will need. Don't forget to account for pieces that need to be cut multiple times and pieces that are cut on the fold.



CUTTING:

Note on cutting:

On the pattern pieces, "beam" means straight of grain. Lay out your pieces accordingly. Some pieces will be cut on the fold. This is noted on the pattern piece. Mark all notches and other design features such as pleats etc. from the pattern onto your fabric.

When sewing the garment, pay attention to notches, they must match up.

Main fabric:

1. Upper back – cut 1 on fold
2. Back belt — cut 1
3. Lower back — cut 1 on fold
4. Upper front right — cut 1
5. Upper front left — cut 1
6. Front belt — cut 1
7. Lower front — cut 1 on fold

8. Sleeve — cut 2
9. Back neck facing — cut 1
10. Front neck facing — cut 1
11. Belt — cut 1
12. Pocket bag — cut 4

Fusible interfacing:

1. Back neck facing — cut 1
2. Front neck facing — cut 1

INSTRUCTIONS:

1. Apply fusible interfacing.
2. Sew the bust dart on the right upper front, press bulk towards top. Sew upper side front to center side front, press seam, serge. Press the upper right front along the marked line. Topstitch right front onto left front along the princess seam.
3. Sew side and shoulder seams of upper parts, press seams towards back and serge.
4. Pin pocket bags onto the right side of lower front and lower back and sew. Serge. Sew side seams on lower parts, sewing the pocket bags at the same time, press towards front and serge. Sew a gathering stitch along the upper edge of the lower part and gather fullness.
5. Sew the right side seam of the back waistband and the front waistband, press seam apart. Fold under the seam allowances of the upper edge and side edges and press. Topstitch the seam allowances of the side edges.
6. Sew upper part to lower part, inserting the lower edge of the belt in between the pieces. Serge and press towards bottom. Topstitch the upper edge of the belt onto garment at 0.1 cm from the edge, making a casing.
7. Sew shoulder seams of neck facings, press seam apart. Serge outer edge. Pin facing to garment right sides together and sew neckline, clip into curves. Turn facing under, straighten, press. Topstitch at 0.5 cm from the edge.
8. Sew sleeve seam, press seams towards back and serge. Sew sleeves into armholes matching notches and adjusting ease. Serge and press.
9. Serge hem of garment and lower edge of sleeve, press onto wrong side and topstitch.
10. Fold belt in half lengthwise right sides together and sew around all edges, and leave an opening unsewn along the lower edge, so that you can turn out the piece later. Turn belt right side out, straighten, press. Sew the opening closed. Thread belt into casing.

11. Sew on buttons, fixing the front princess seam.

TECHNICAL DRAWING:

