

## Dress With Pockets In French Darts - Sewing Pattern #2209

Recommendations on fabric: natural/mixed fabric suitable for dresses.

You will also need: fusible interfacing; dress zipper.

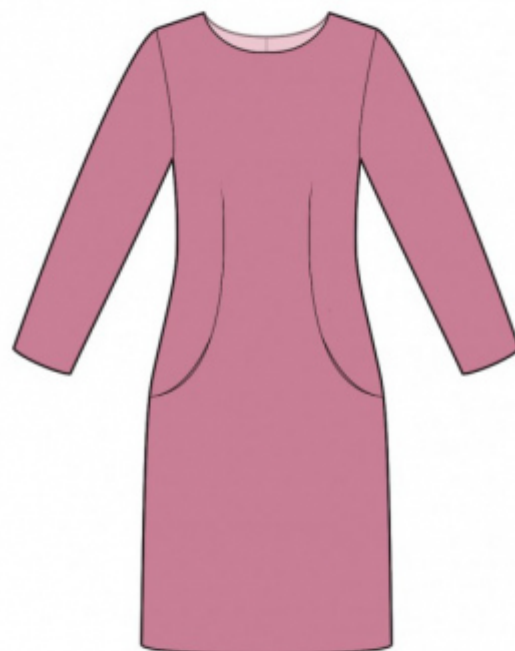
Seam allowances: Seam allowance along hem of garment and hem of sleeve - 2.0 cm. Other seams - 1.0 cm.

### Note on seam allowances:

- If the pattern has double contour the seam allowances are included. They are 1 cm unless specified otherwise.
- If the pattern has single contour, the seam allowances are NOT included and need to be added when laying out the pattern.

### Note on length of fabric:

*Attention! The amount of fabric needed for your pattern is not included. It will depend on the selected pattern size, the width, and design of the fabric you plan to use. First, print all the paper patterns and lay them out at the width of fabric you plan to use (usually from 90 to 150 cm). Measure how much fabric you will need. Don't forget to account for pieces that need to be cut multiple times and pieces that are cut on the fold.*



## CUTTING:

### Note on cutting:

*On the pattern pieces, "beam" means straight of grain. Lay out your pieces accordingly. Some pieces will be cut on the fold. This is noted on the pattern piece. Mark all notches and other design features such as pleats etc. from the pattern onto your fabric.*

*When sewing the garment, pay attention to notches, they must match up.*

Main fabric:

1. Back - cut 2
2. Front - cut 1 on fold
3. Front neck facing - cut 1
4. Back neck facing - cut 2
5. Pocket bag - cut 4

Fusible interfacing:

1. Front neck facing - cut 1
2. Back neck facing - cut 2

## **INSTRUCTIONS:**

1. Apply fusible interfacing. Also apply fusible interfacing to the seam allowance of lower pocket bag on Front.
2. Sew darts on back, press bulk towards center. Serge separately center back edges, sew them from notch for zipper to bottom, press seam apart. Sew in zipper.
3. Clip into seam allowances near the notch for pocket. Sew pocket bags to front. Serge. Sew side front to front, sewing the pocket bag at the same time. Serge.
4. Sew shoulder and side seams. Serge seams and press towards back.
5. Sew shoulder seams of neck facings, press seam apart. Serge outer edge. Pin facing onto dress, right side down and sew the neckline. Clip seam allowances, fold facing onto wrong side and press. Slipstitch facing to zipper tape.
6. Sew sleeve seam. Serge and press towards back. Sew sleeve into armhole according to notches, serge and press.
7. Serge hem of garment and hem of sleeve, press onto wrong side and topstitch.

## **TECHNICAL DRAWING:**

