

## Dress With Asymmetrical Collar - Sewing Pattern #2083

Recommendations on fabric: natural/mixed fabric suitable for dresses.

You will also need: fusible interfacing; 1 zipper.

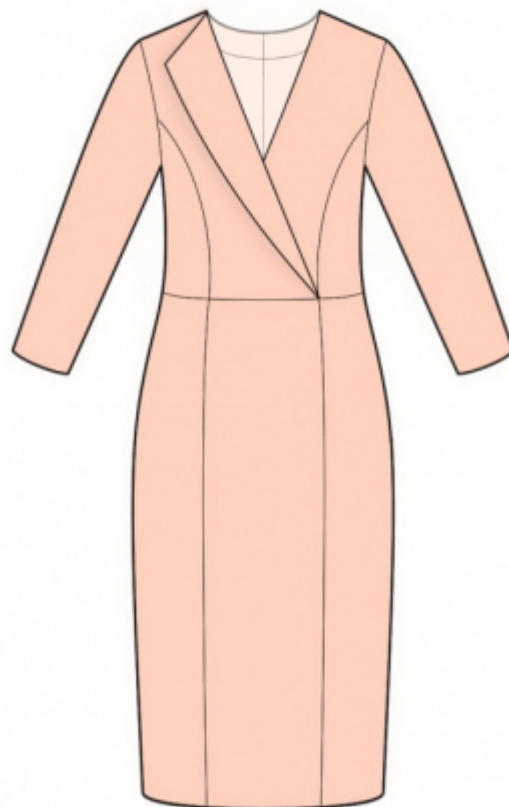
Seam allowances: all seams 1 cm; seam allowance for hem of dress – 2.0 cm; seam allowance for hem of sleeve – 1.2 cm.

### Note on seam allowances:

- If the pattern has double contour the seam allowances are included. They are 1 cm unless specified otherwise.
- If the pattern has single contour, the seam allowances are NOT included and need to be added when laying out the pattern.

### Note on length of fabric:

*Attention! The amount of fabric needed for your pattern is not included. It will depend on the selected pattern size, the width, and design of the fabric you plan to use. First, print all the paper patterns and lay them out at the width of fabric you plan to use (usually from 90 to 150 cm). Measure how much fabric you will need. Don't forget to account for pieces that need to be cut multiple times and pieces that are cut on the fold.*



## CUTTING:

### Note on cutting:

*On the pattern pieces, "beam" means straight of grain. Lay out your pieces accordingly. Some pieces will be cut on the fold. This is noted on the pattern piece. Mark all notches and other design features such as pleats etc. from the pattern onto your fabric.*

*When sewing the garment, pay attention to notches, they must match up.*

Main fabric:

1. Upper center back
2. Lower center back – cut 2
3. Back side - cut 2
4. Lower side back - cut 2
5. Front side - cut 2
6. Lower side front – cut 2
7. Right center front – cut 1

8. Left center front – cut 1
9. Lower front – cut 1
10. Center front facing left – cut 1
11. Center front facing right – cut 1
12. Back neck facing – cut 2
13. Sleeve – cut 2

Fusible interfacing:

1. Back neck facing – cut 2
2. Center front facing right – cut 1
3. Center front facing left – cut 1

## INSTRUCTIONS:

1. Apply fusible interfacing.
2. Serge outer edges of center front facings and outer edges of back neckline facings.
3. Pin left center front facing onto left front and sew along neckline edge. Center front facing fold onto wrong side and press. Serge slanted edge. Sew center front facing to Right Front. Trim corner. Turn center front facing onto wrong side and press. Pin right front onto left front and topstitch along the marked line. Fold lapel.
4. Sew front side to front, serge seams and press towards center. Sew lower fronts. Serge seams and press towards center. Sew upper front to lower front. Serge and press towards top.
5. Sew Side Back to Back, serge seams and press towards center. Sew lower backs together. Serge seams and press towards center. Sew upper backs to lower backs. Serge seams and press towards top.
6. Serge separately center back edges. Sew the seam from zipper marker down to hem. Press seam apart, sew in zipper.
7. Pin neckline facing onto Back and sew neckline exactly up to the marked line of shoulder seam. Clip seam allowances, fold facing onto wrong side and press. Slipstitch facing to zipper tape.
8. Sew shoulder seams, inserting Front between Back and Back Facing. Press seams towards back and serge.
9. Sew sleeve seam, serge. Sew sleeves into armholes. Serge.
10. Serge hem of dress and hem of sleeve, press onto wrong side and topstitch.

**TECHNICAL DRAWING:**

