

## Y1920004 1920's Wrap Dress With Flounces With Chemise

Recommended fabrics: well draping light natural/mixed fabrics suitable for dresses.

You will also need: fusible interfacing, dress zipper.

Seam allowances: all seams 3/8 inch, shoulder, side and center back seams - 5/8 inch, outer edge of facings - 0 inch, hem of dress - 1 inch, hem of sleeve - 5/8 inch.

### Note on seam allowances:

- If the pattern has double contour the seam allowances are included.

- If the pattern has single contour, the seam allowances are NOT included and need to be added when laying out the pattern.

### Note on length of fabric:

Attention! The amount of fabric needed for your pattern is not included. It will depend on the selected pattern size, the width, and design of the fabric you plan to use. You are welcome to use the Online Fabric Estimator to make calculations. Alternatively, print all the paper patterns and lay them out at the width of fabric you plan to use (usually from 90 to 150 cm). Measure how much fabric you will need. Don't forget to account for pieces that need to be cut multiple times and pieces that are cut on the fold.



### PRINTING:

Please use Adobe Reader software to open your PDF pattern. You can get Adobe Reader free of charge at this link - <https://get.adobe.com/reader/>.

Make sure you print your patterns at actual size (100%% scale or None) and on single sides of plain A4 paper. Verify that the print out size is to the correct scale by measuring the test square on the first page. The upper edge of the square features a centimeter scale, and the bottom edge features an inch scale.

Trim top and/or right margin of the pages where you see the scissors symbols. In the center of each page, the number of row and column is printed, separated by / sign. Construct layout pages according to these marks (for example, page marked 2/3 is in the second row and in the third column). Align pages using margins and tape or glue together.

### CUTTING:

#### Note on cutting:

Lay out your pieces according to straight of grain as marked on the pattern pieces.

Some pieces will be cut on the fold, the corresponding edge will then be marked with a fold mark. Kindly pay attention to notes regarding type of fabric and quantity of required pieces on a block. For example, [ Main, Interfacing - cut 1+1 ] on a pattern piece means that you need to cut 1 piece as is and 1 mirrored piece from the main fabric as well as from interfacing.

Make sure to mark all notches and other design features such as pleats etc. from the pattern piece onto your fabric. When sewing the garment, pay attention to notches, they must match up.

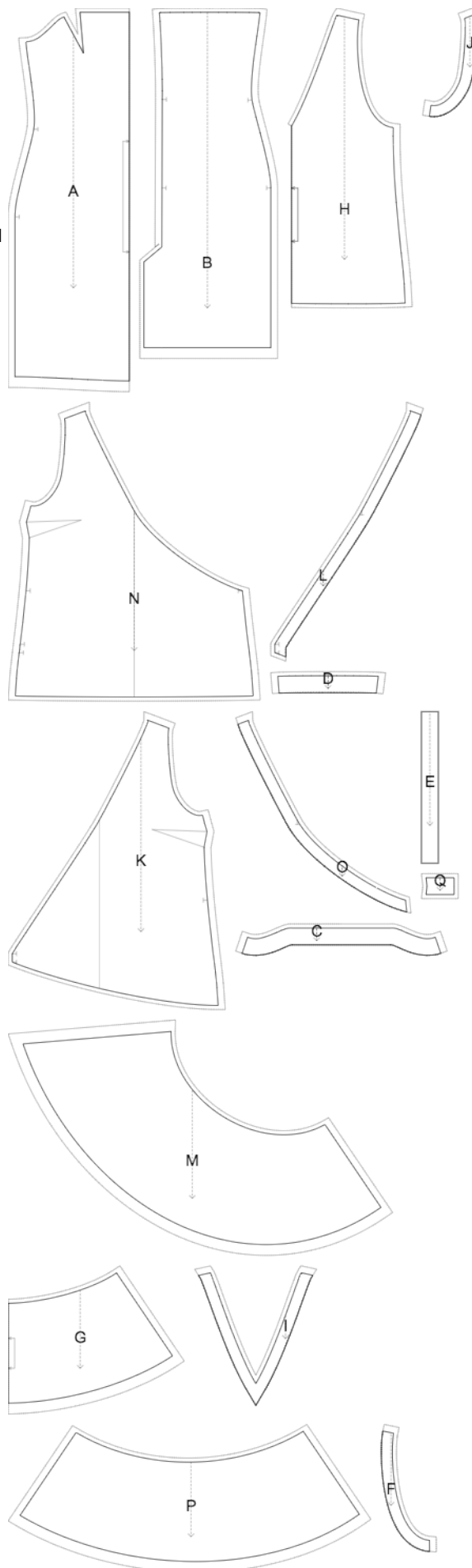
Self

- (A) Chemise Front - cut 1 on fold
- (B) Chemise Back - cut 1 +1
- (C) Front Chemise Facing - cut 1
- (D) Back Chemise Facing - cut 1 +1
- (E) Chemise Strap - cut 1 +1
- (F) Top Back Armhole Facing - cut 1 +1
- (G) Back Flounce - cut 1 on fold
- (H) Top Back - cut 1 on fold
- (I) Top Back Neckline Facing - cut 1 +1
- (J) Top Front Armhole Facing - cut 1 +1
- (K) Top Right Front - cut 1
- (L) Top Right Front Neckline Facing - cut 1
- (M) Top Right Front Flounce - cut 1
- (N) Top Left Front - cut 1
- (O) Top Left Front Neckline Facing - cut 1
- (P) Top Left Front Flounce - cut 1
- (Q) Top Front Strap - cut 1

Interfacing

- (C) Front Chemise Facing - cut 1
- (D) Back Chemise Facing - cut 1 +1
- (F) Top Back Armhole Facing - cut 1 +1
- (I) Top Back Neckline Facing - cut 1 +1
- (J) Top Front Armhole Facing - cut 1 +1
- (L) Top Right Front Neckline Facing - cut 1
- (O) Top Left Front Neckline Facing - cut 1

\* The capital letters in brackets correspond to pattern blocks as seen in Online Fabric Estimator and in pattern blocks preview on the right.



## INSTRUCTIONS:

### CHEMISE WITH STRAPS

- Apply fusible interfacing according to the Cutting instructions.
- Serge center back edges separately. Sew in dress zipper, preferably using invisible zipper foot. Sew center back seam AFTER you have installed the zipper, stitch as closely as you can to the end of the zipper. Slipstitch the opening and press.
- VENT: Apply fusible interfacing to vent area on backs from the wrong side. Mark center seam line (vent foldline) from the right side. Press left skirt along vent fold. On the right skirt, press the seam allowance of the right side of the vent onto wrong side. Align pieces along center seam and baste together along upper edge of vent. Serge seam allowances of vent. Clip into seam allowance of vent in corner on right part. Press apart center seam, press seam allowances of the vent and sew them together by machine.
- Sew front darts, cut bulk to 1 cm and serge, press bulk towards center.
- Fold strap in half lengthwise, right sides together, and sew long edge. Turn right side out, placing seam on fold, press. Topstitch at 0.2 cm from the edge.
- Sew side seams of back and front top edge facings, serge lower edge. Pin facing to garment and sew upper edge, inserting straps on front near the darts, and on back near the markings. Trim corners, and understitch. Turn facing onto wrong side, press. Turn center back edges to inside and slipstitch to zipper tape. Topstitch facing into connecting seam.
- Put on the chemise, adjust length of straps, serge lower edges and fasten them to back facing over side back seams.
- Serge hem, turn under, press and topstitch or slip stitch as desired.

### TOP DRESS

- Apply fusible interfacing according to the Cutting instructions.
- Sew Top Back to Back Flounce. Serge and press towards flounce. Treat as whole Back piece in the future.
- Sew Right Front Flounce to Top Right Front. Serge and press towards flounce. Treat as whole Top Right Front in the future.
- Sew Right Left Flounce to Top Left Front. Serge and press towards flounce. Treat as whole Top Left Front in the future.
- Fold the strap in half lengthwise together and sew the longer edge. Turn right side out, and press. Pin the Strap to the seam allowances of Right Front between the markings, right sides together, the raw edge of the strap directed to the side seam, the fold directed towards top.

- Sew shoulder seams of Top Back and Front Neckline Facings. Press seam apart and serge. Serge outer edge of facings. Pin facing onto Shell right sides together, adjusting neckline edges. The strap rests between the Top Right Front and the Top Right Neckline Facing, the edges of all the three pieces should be aligned. Sew the neckline continuously from lower corner of Right Front to lower corner of Left Front. Clip into curves, turn pieces right side out and press. Slip stitch facing to seam allowances of shoulder seam on Shell.
- Place Right Front over Left Front, right side over right side, and match the center front line and the waist and strap markings. Baste together. Treat as whole Front Piece in the future.
- Sew side seams. Serge and press towards back.
- Sew shoulder and side seams of armhole facings. Press seam apart and serge. Serge outer edge of facings. Pin facing onto Shell right sides together, adjusting armhole edges and matching markings. Sew the armhole in two steps - first one front, and then the back. Clip into curves, turn pieces right side out and press. Topstitch seam allowances onto facing.
- Serge hem, turn under, press and topstitch or slip stitch as desired.
- Make a fabric rose, or a bow, from the remnants of fabric and attach it to the front strap (optional).

## **TECHNICAL DRAWING:**

