

## S2002 Straight Pants, Full Length

Recommended fabrics: light natural/mixed suiting fabrics.

You will also need: 1 zipper; 1 button

Seam allowances - all seams 5/8 inch, hem 1 inch.

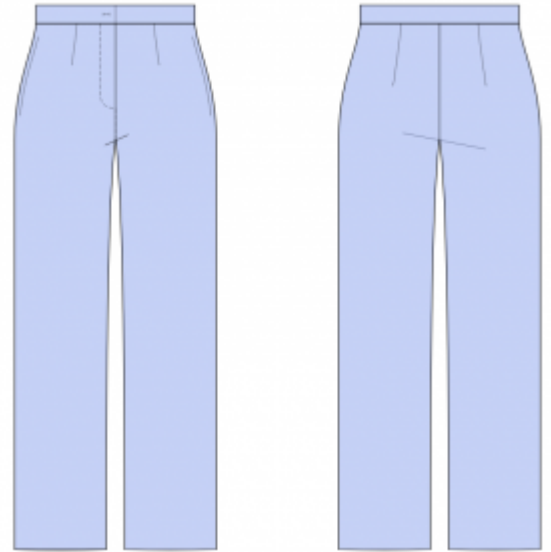
### Note on seam allowances:

- If the pattern has double contour the seam allowances are included.

- If the pattern has single contour, the seam allowances are NOT included and need to be added when laying out the pattern.

### Note on length of fabric:

Attention! The amount of fabric needed for your pattern is not included. It will depend on the selected pattern size, the width, and design of the fabric you plan to use. You are welcome to use the Online Fabric Estimator to make calculations. Alternatively, print all the paper patterns and lay them out at the width of fabric you plan to use (usually from 90 to 150 cm). Measure how much fabric you will need. Don't forget to account for pieces that need to be cut multiple times and pieces that are cut on the fold.



### PRINTING:

Please use Adobe Reader software to open your PDF pattern. You can get Adobe Reader free of charge at this link - <https://get.adobe.com/reader/>.

Make sure you print your patterns at actual size (100%% scale or None) and on single sides of plain A4 paper. Verify that the print out size is to the correct scale by measuring the test square on the first page. The upper edge of the square features a centimeter scale, and the bottom edge features an inch scale.

Trim top and/or right margin of the pages where you see the scissors symbols. In the center of each page, the number of row and column is printed, separated by / sign. Construct layout pages according to these marks (for example, page marked 2/3 is in the second row and in the third column). Align pages using margins and tape or glue together.

### CUTTING:

#### Note on cutting:

Lay out your pieces according to straight of grain as marked on the pattern pieces.

Some pieces will be cut on the fold, the corresponding edge will then be marked with a fold mark. Kindly pay attention to notes regarding type of fabric and quantity of required pieces on a block. For example, [ Main, Interfacing - cut 1+1 ] on a pattern piece means that you need to cut 1 piece as is and 1 mirrored piece from the main fabric as well as from interfacing.

Make sure to mark all notches and other design features such as pleats etc. from the pattern piece onto your fabric. When sewing the garment, pay attention to notches, they must match up.

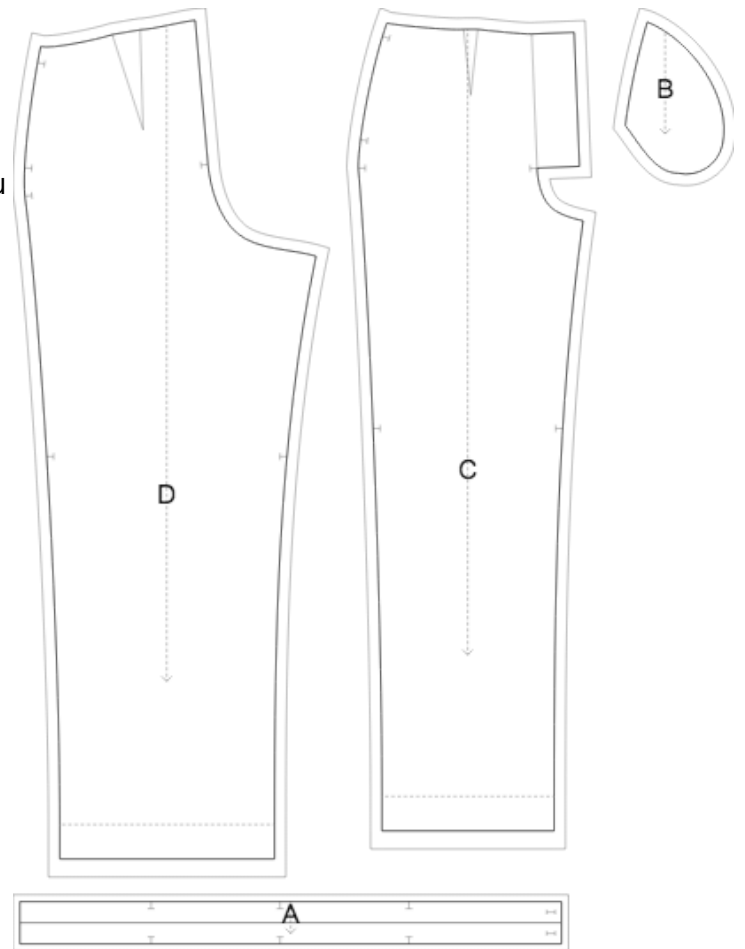
Self

- (A) Belt - cut 1
- (B) Pocket Bag - cut 2 +2
- (C) Front - cut 1 +1
- (D) Back - cut 1 +1

Interfacing

- (A) Belt - cut 1

\* The capital letters in brackets correspond to pattern blocks as seen in Online Fabric Estimator and in pattern blocks preview on the right.



## INSTRUCTIONS:

1. Apply the interfacing to wrong side of waistband.
2. Sew darts, press toward center.
3. Pin fronts right sides together, sew center front seam from notch mark to 2 cm below step seam.
4. ZIPPER: press the zipper closure one-piece facing onto wrong side. Sew the zipper under the allowance edge (left edge) along the edge. Sew free zipper tape to right edge, to one-piece facing. Fold the button catch along the center, then sew it along upper and lower short edges. Topstitch the zipper closure one-piece facing on the button catch on the left part of the garment. Topstitch the slit right edge catching the facing.
5. Pin one front and one back right sides together. Sew side seams and inner leg seam. Press seam allowances apart.
6. Place one pant leg into the other pant leg, right sides together. Sew the center crotch. Press seam allowance apart, to crotch curve. Fold the waistband along the center, right side together, then sew front ends. Turn the waistband right side out. Sew outer waistband edge to outer upper edge of garment, right sides together, with the extended part for button on left. Turn seam allowance under on the inner side of waistband and topstitch in the ditch along the joining seam from the right side.
7. Serge bottom edge of pant leg. Fold onto wrong side, and topstitch.

8. Make a buttonhole on right end of waistband, sew the button on left.

**TECHNICAL DRAWING:**

