

S4042 Dress With Wrap, Stand Collar And Flared Skirt

Recommended fabrics: natural/mixed dress fabrics.

You will also need: fusible interfacing, dress zipper.

Seam allowances: all seams 3/8 inch, side, shoulder and center back seams - 5/8 inch, front neckline hem - 1 inch.

Note on seam allowances:

- If the pattern has double contour the seam allowances are included.

- If the pattern has single contour, the seam allowances are NOT included and need to be added when laying out the pattern.

Note on length of fabric:

Attention! The amount of fabric needed for your pattern is not included. It will depend on the selected pattern size, the width, and design of the fabric you plan to use. You are welcome to use the Online Fabric Estimator to make calculations. Alternatively, print all the paper patterns and lay them out at the width of fabric you plan to use (usually from 90 to 150 cm). Measure how much fabric you will need. Don't forget to account for pieces that need to be cut multiple times and pieces that are cut on the fold.



PRINTING:

Please use Adobe Reader software to open your PDF pattern. You can get Adobe Reader free of charge at this link - <https://get.adobe.com/reader/>.

Make sure you print your patterns at actual size (100%% scale or None) and on single sides of plain A4 paper. Verify that the print out size is to the correct scale by measuring the test square on the first page. The upper edge of the square features a centimeter scale, and the bottom edge features an inch scale.

Trim top and/or right margin of the pages where you see the scissors symbols. In the center of each page, the number of row and column is printed, separated by / sign. Construct layout pages according to these marks (for example, page marked 2/3 is in the second row and in the third column). Align pages using margins and tape or glue together.

CUTTING:**Note on cutting:**

Lay out your pieces according to straight of grain as marked on the pattern pieces.

Some pieces will be cut on the fold, the corresponding edge will then be marked with a fold mark. Kindly pay attention to notes regarding type of fabric and quantity of required pieces on a block. For example, [Main, Interfacing - cut 1+1] on a pattern piece means that you need to cut 1 piece as is and 1 mirrored piece from the main fabric as well as from interfacing.

Make sure to mark all notches and other design features such as pleats etc. from the pattern piece onto your fabric. When sewing the garment, pay attention to notches, they must match up.

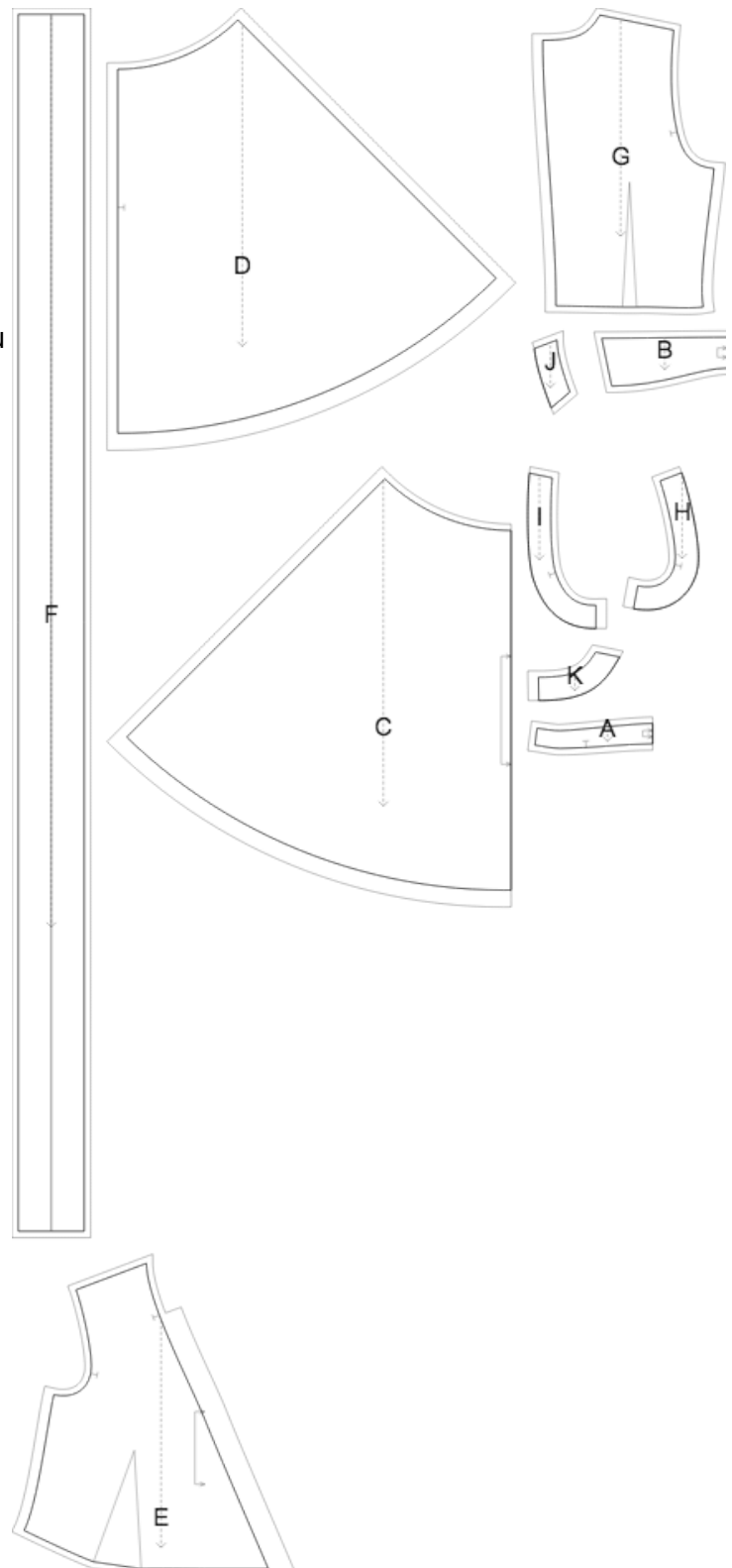
Self

- (A) Stand Collar - cut 1 +1 on fold
- (B) Collar - cut 1 +1 on fold
- (C) Front Skirt - cut 1 on fold
- (D) Back Skirt - cut 1 +1
- (E) Front - cut 1 +1 on fold
- (F) Belt - cut 1
- (G) Back - cut 1 +1
- (H) Front Armhole Facing - cut 1 +1
- (I) Back Armhole Facing - cut 1 +1
- (J) Front Neckline Facing - cut 1 +1
- (K) Back Neckline Facing - cut 1 +1

Interfacing

- (A) Stand Collar - cut 1 +1 on fold
- (B) Collar - cut 1 +1 on fold
- (H) Front Armhole Facing - cut 1 +1
- (I) Back Armhole Facing - cut 1 +1
- (J) Front Neckline Facing - cut 1 +1
- (K) Back Neckline Facing - cut 1 +1

* The capital letters in brackets correspond to pattern blocks as seen in Online Fabric Estimator and in pattern blocks preview on the right.

**INSTRUCTIONS:**

1. Apply fusible interfacing according to the Cutting instructions.

2. Sew darts on Front pieces. Stitch the dart using a stitch length of about 2 to 2.5 from the outer edge towards end of the dart, the last stitches very close to fabric. Stitch off the edge at the dart point, leave thread tails and tie a knot. Cut bulk off of 1 cm, if desired, and press towards center.
3. Sew darts on Back pieces. Stitch the dart using a stitch length of about 2 to 2.5 from the outer edge towards end of the dart, the last stitches very close to fabric. Stitch off the edge at the dart point, leave thread tails and tie a knot. Press bulk of darts towards center.
4. Serge part of front neckline from notch to sharp end, turn under, press. Pin Right Front onto Left Front, right sides facing you, matching ends of neckline with front darts, baste along the lower edge. Sew Front Bodice to Front Skirt. Serge and press towards top. Treat as one Front piece in the future.
5. Sew Back Bodices to Back Skirts pairwise. Serge and press towards top. Treat as whole Back pieces in the future.
6. Serge center back edges separately. Sew and press apart.
7. Sew shoulder seams. Serge and press towards back.
8. Serge left side seam separately. Sew in zipper between notches. Sew from armhole to zipper and from zipper to hem, press apart. Sew right side seam, serge and press towards back.
9. Sew shoulder and side seams of armhole facings. Press seam apart and serge. Serge outer edge of facings. Pin facing onto Shell right sides together, adjusting armhole edges and matching markings. Sew the armhole in two steps - first one front, and then the back. Clip into curves, turn pieces right side out and press. Topstitch seam allowances onto facing.
10. Sew upper collar to collar stand, sew lower collar to collar stand. Press seam apart. Pin collar right sides together and sew along outer edge and side edges. Start and finish the seam exactly near marked line of stand-up collar connecting seam. Turn collar/collar stand right side out and press.
11. Sew and press apart shoulder seams of back neck facing and front neck facing.
13. Sew upper collar into the neckline, and lower collar into the neckline of the facing. Press seams apart. Fix seam allowances of collar connecting seam close to seams. Slipstitch front neck facing to hem of front wrap. Optionally topstitch along the wrap edge.
14. Serge hem, turn under, press and topstitch or slip stitch as desired.
15. Fold belt in half lengthwise, right sides together, and sew along the contour, leaving an opening in on the long side for turning. Turn the belt right side out, turn inside seam allowances of unsewn section and sew with invisible stitches. Make a decorative stitch at 0.8 cm from the edge along the perimeter of the belt.

TECHNICAL DRAWING:

