

S4016 1920's Dress With Double Neckline

Fabric recommendations: dress fabrics, light wool.

You will also need: fusible interfacing, dress zipper.

Seam allowances: all seams - 3/8 inch, side, shoulder and center back seams - 5/8 inch, hem - 1 inch.

Note on seam allowances:

- If the pattern has double contour the seam allowances are included.

- If the pattern has single contour, the seam allowances are NOT included and need to be added when laying out the pattern.

Note on length of fabric:

Attention! The amount of fabric needed for your pattern is not included. It will depend on the selected pattern size, the width, and design of the fabric you plan to use. You are welcome to use the Online Fabric Estimator to make calculations. Alternatively, print all the paper patterns and lay them out at the width of fabric you plan to use (usually from 90 to 150 cm). Measure how much fabric you will need. Don't forget to account for pieces that need to be cut multiple times and pieces that are cut on the fold.



PRINTING:

Please use Adobe Reader software to open your PDF pattern. You can get Adobe Reader free of charge at this link - <https://get.adobe.com/reader/>.

Make sure you print your patterns at actual size (100%% scale or None) and on single sides of plain A4 paper. Verify that the print out size is to the correct scale by measuring the test square on the first page. The upper edge of the square features a centimeter scale, and the bottom edge features an inch scale.

Trim top and/or right margin of the pages where you see the scissors symbols. In the center of each page, the number of row and column is printed, separated by / sign. Construct layout pages according to these marks (for example, page marked 2/3 is in the second row and in the third column). Align pages using margins and tape or glue together.

CUTTING:

Note on cutting:

Lay out your pieces according to straight of grain as marked on the pattern pieces.

Some pieces will be cut on the fold, the corresponding edge will then be marked with a fold mark. Kindly pay attention to notes regarding type of fabric and quantity of required pieces on a block. For example, [Main, Interfacing - cut 1+1] on a pattern piece means that you need to cut 1 piece as is and 1 mirrored piece from the main fabric as well as from interfacing.

Make sure to mark all notches and other design features such as pleats etc. from the pattern piece onto your fabric. When sewing the garment, pay attention to notches, they must match up.

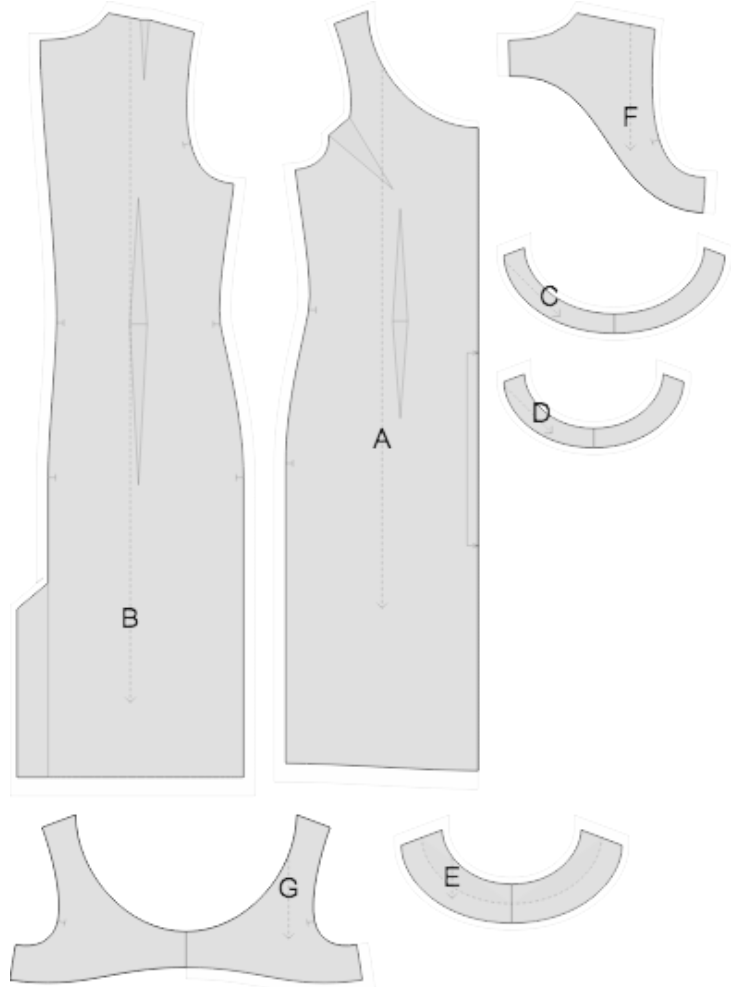
Self

- (A) Front - cut 1 on fold
- (B) Back - cut 1 +1
- (C) Lower Collar - cut 1
- (D) Upper Collar - cut 1
- (E) Collar Facing - cut 1
- (F) Back Facing - cut 1 +1
- (G) Front Facing - cut 1

Interfacing

- (F) Back Facing - cut 1 +1
- (G) Front Facing - cut 1

* The capital letters in brackets correspond to pattern blocks as seen in Online Fabric Estimator and in pattern blocks preview on the right.



INSTRUCTIONS:

1. Apply fusible interfacing according to the Cutting instructions.
2. IMPORTANT: the waist darts on your pattern, both Front and Back, have the widest part in the middle.
 - Start stitching them at the waist level towards the upper point of the dart, leave thread tails and tie a knot.
 - Then place needle at the beginning of the seam by 1-2 cm and stitch towards the lower point of the dart. Leave thread tails and tie a knot.
3. Stitch bust and waist darts on Front pieces. Start stitching from the outer edge and stitch towards point of the

dart. Do not backstitch at the end, but knot ends of thread at points of darts. Press the bulk of bust darts towards the center and waist darts toward the center.

4. Sew darts on Back pieces. Stitch the dart using a stitch length of about 2 to 2.5 from the outer edge towards end of the dart, the last stitches very close to fabric. Stitch off the edge at the dart point, leave thread tails and tie a knot. Press bulk of darts towards center.

5. Serge center back edges separately. Sew in zipper.

6. VENT: Apply fusible interfacing to vent area on backs from the wrong side. Mark center seam line (vent fold-line) from the right side. Press left skirt along vent fold. On the right skirt, press the seam allowance of the right side of the vent onto wrong side. Align pieces along center seam and baste together along upper edge of vent. Serge seam allowances of vent. Clip into seam allowance of vent in corner on right part. Press apart center seam, press seam allowances of the vent and sew them together by machine.

7. Pin upper collar to lower collar, wrong sides together, and sew. Clip into curves and press apart. Pin the resulting collar to collar facing, wrong sides together, and sew along upper and lower edge, starting and stopping exactly at the marked shoulder seam. Clip into curves. Turn right side out and press.

8. Serge outer edge of front facing. Pin front facing onto neckline of the Shell right sides together, adjusting neckline edges, and sew, starting and stopping exactly at the marked shoulder seam. Clip into curves. Turn right side out and press.

9. Serge outer edge of back neckline facing. Pin back facing onto neckline of the Shell right sides together, adjusting neckline edges. Fold the facing away all the way along EXCEPT for the area 5 mm from the edge of dress zipper and pin it to upper edge of garment. Fold seam allowances along zipper onto right side and pin to neckline on top of facings. Sew, starting and stopping exactly at the marked shoulder seam. Clip into curves. Turn right side out and press.

10. Pin back Shell to front Shell and collar along shoulder seam, matching blade dart with the collar / lower front neckline. Sew, serge and press towards back. Sew back facing to front facing along shoulder. Sew shoulder seams of neckline facings. Serge and press towards back. Slip stitch facing to seam allowances of shoulder seam on Shell. Slipstitch facing to zipper tape.

11. Sew side seams of armhole facings. Press seam apart and serge. Pin facing onto Shell right sides together, adjusting armhole edges and matching markings. Sew the armhole in two steps - first one front, and then the back. Clip into curves, turn pieces right side out and press. Topstitch seam allowances onto facing.

11. Serge hem, turn under, press and topstitch or slip stitch as desired.

TECHNICAL DRAWING:

