

Blouse With Flounces - Sewing Pattern #4756

Recommendations on fabric: well draping double sided natural/mixed fabric suitable for dresses.

You will also need: decorative closing.

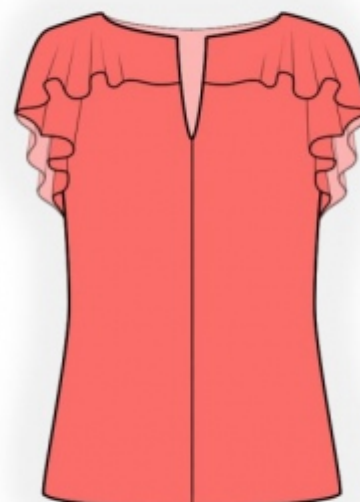
Seam allowances: all seams 1 cm; seam allowance for hem of garment - 2.5 cm.

Note on seam allowances:

- If the pattern has double contour the seam allowances are included. They are 1 cm unless specified otherwise.
- If the pattern has single contour, the seam allowances are NOT included and need to be added when laying out the pattern.

Note on length of fabric:

Attention! The amount of fabric needed for your pattern is not included. It will depend on the selected pattern size, the width, and design of the fabric you plan to use. First, print all the paper patterns and lay them out at the width of fabric you plan to use (usually from 90 to 150 cm). Measure how much fabric you will need. Don't forget to account for pieces that need to be cut multiple times and pieces that are cut on the fold.



CUTTING:

Note on cutting:

On the pattern pieces, "beam" means straight of grain. Lay out your pieces accordingly. Some pieces will be cut on the fold. This is noted on the pattern piece. Mark all notches and other design features such as pleats etc. from the pattern onto your fabric.

When sewing the garment, pay attention to notches, they must match up.

Main fabric:

1. Back - cut 1 on fold
2. Front - cut 2
3. Back flounce – cut 2
4. Front flounce - cut 2
5. Back lining – cut 1
6. Front lining - cut 2

INSTRUCTIONS:

1. Serge center front edges separately. Sew center seam on front from notch to bottom edge, press seam apart.
2. Sew side seams, press seams towards back and serge.
3. Sew side seams on flounces, press seam apart and serge. Sew a thin rolled hem on outer edge of rouches.
4. Clip front flounce near notch. Pin flounces onto garment and baste together along edges.
5. Sew shoulder seams, press seam apart.
6. Sew side, shoulder and center front seam on pieces from lining. Press seam apart and serge. Serge lower edge.
7. Pin together lining and garment and sew neckline and front slit, inserting the decorative closure. Clip into curves. Turn garment right side out, press. Sew armhole in two steps: first front, then back.
8. Serge lower edge, press onto wrong side and topstitch.

TECHNICAL DRAWING:

