

## Sewing Pattern — Blouson 4284

Recommendations on fabric: natural / mixed knitted fabric of 2 colors of medium stretchiness

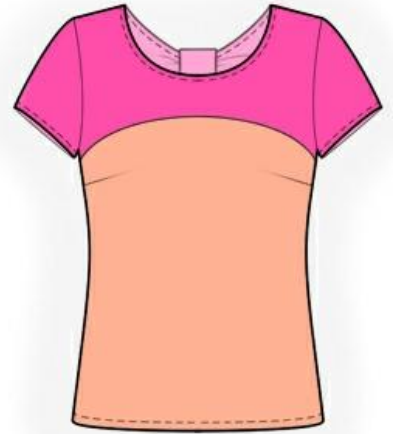
If the pattern has double contour the seam allowances are included.

If the pattern has single contour, the seam allowances are NOT included and need to be added when laying out and cutting details.

Seam allowance: hem and lower edge of sleeve – 1.5 cm, back part neckline edge, neckline edges of back part / front part yokes - 1.5 cm, all other seams - 0.8 cm

Attention! First of all please print all the paper patterns and lay them out at the width of fabric you plan to use (usually from 90 to 150 cm) to see how much fabric you will need. Don't forget to count pair parts and symmetrical parts.

When sewing the garment, pay attention to notches, they must coincide.



### **CUTTING:**

#### Main fabric 1:

1. Back part – 1 folded detail
2. Front part – 1 folded detail

#### Main fabric 2:

1. Back yoke – 1 detail
2. Front part yoke – 1 detail
3. Sleeve – 2 details
4. Strap – 1 detail

#### Advice:

Knitted fabric details are sewn together with special elastic or narrow zig-zag stitch. When serging cut seam allowances to 0.6 – 0.8 cm. Seam allowance on turnout is stitched with twin needles to save stretchiness. Details also can be sewn together via 3 or 4 – threaded serger.

### **INSTRUCTIONS:**

1. Mark and sew darts on front part. Press depths upwards. Stitch yoke to front part. Serge seams and press onto yoke.
2. Serge, turn inside and topstitch neckline of back part. Serge, turn inside and topstitch lower edge of back part yoke. Fold back part with the yoke, leveling shoulder edges and edges of the armhole. Fix details together.
3. Sew shoulder and side edges, serge and press towards back part.

4. Sew sleeve seam, serge and press. Sew sleeves into armholes. Serge and press the seam.
5. Serge hem of garment, neckline edge and lower edge of sleeve. Turn onto wrong side, press and topstitch.
6. Fold the strap in half lengthwise right sides together and sew. Turn detail out and press. Wrap yoke of back part with the strap and sew the strap into ring. Tack the strap to back part yoke from the wrong side.

**TECHNICAL DRAWING:**

