

Recommendations on fabric: light weight, natural/mixed fabric suitable for coats.

You will also need: fusible interfacing, lining, raglan shoulder pads, separable zipper.

Seam allowances: 1 cm for all seams, 3.0 cm for lower edge of sleeve.

Note on seam allowances:

- If the pattern has double contour the seam allowances are included. They are 1 cm unless specified otherwise.
- If the pattern has single contour, the seam allowances are NOT included and need to be added when laying out the pattern.

Note on length of fabric:

Attention! The amount of fabric needed for your pattern is not included. It will depend on the selected pattern size, the width, and design of the fabric you plan to use. First, print all the paper patterns and lay them out at the width of fabric you plan to use (usually from 90 to 150 cm). Measure how much fabric you will need. Don't forget to account for pieces that need to be cut multiple times and pieces that are cut on the fold.



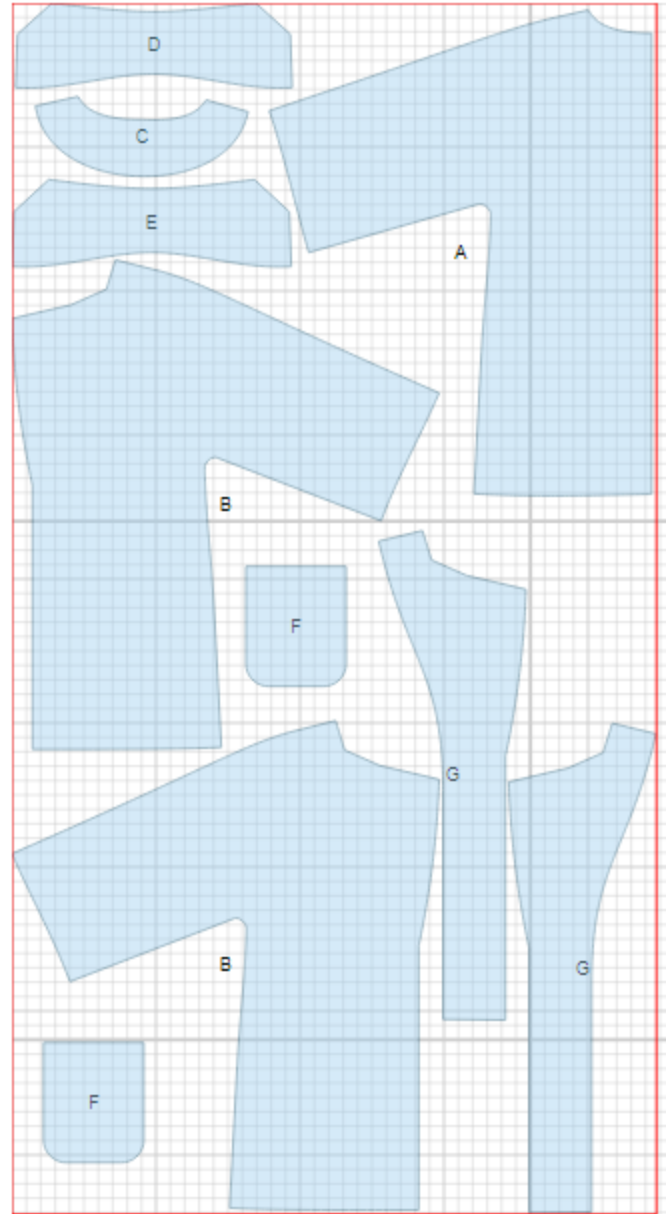
CUTTING:

Main fabric:

1. Back - cut 1 on fold (A)
2. Front – cut 2 (B)
3. Back neck facing - cut 1 (C)
4. Inner collar - cut 1 (D)
5. Outer collar - cut 1 (E)
6. Pocket - cut 2 (F)
7. Front facing - cut 2 (I)

Fusible interfacing:

1. Front facing - cut 2 (I)
2. Back neck facing - cut 1 (C)
3. Inner collar - cut 1 (D)



INSTRUCTIONS:

1. Apply fusible interfacing to listed pieces as well as to lower edge of sleeves. Apply a 1 cm fusible tape along lapel fold on fronts. Sew darts on fronts. Press bulk towards center.
2. Serge pocket edges. Turn upper edge under and topstitch. Turn other edges of pocket under and press. Place pocket on front according to marking and topstitch.
3. Sew shoulder and upper sleeve seam with one continuous stitch. Serge and press seam towards back. Sew side and lower sleeve seam with one continuous stitch. Serge and press seam towards back.
4. Place collars right sides together and sew ends and outer edge. Start and end stitch exactly at mark of collar connecting seam. Trim seams in corners, clip at mark. Turn collar right side out, straighten and press.
5. Sew shoulder seams of back neck facing and front facings. Press seams open. Serge outer edge.
6. Pin front facings to fronts right sides together, and sew along front edge. Sew up to mark showing end of collar connection. Trim seams in corners. Topstitch front band seam allowance towards front facing at closure section, and towards front band at lapel section. Stitch at 0.2 cm from seam. Turn front bands out, straighten seams.
7. Sew lower collar into neckline. Sew upper collar into neckline of back neck facing and front facings. Fasten collars together into connecting seam.
8. Serge hem of coat and lower edge of sleeves. Turn under and slipstitch.
9. Make buttonholes on right front. Sew buttons on left front.

TECHNICAL DRAWING:

