

Recommendations on fabric: light weight, natural/mixed fabric suitable for coats.

You will also need: fusible interfacing, lining, raglan shoulder pads, separable zipper.

Seam allowances: 1 cm for all seams, 3.0 cm for lower edge of sleeve.

Note on seam allowances:

- If the pattern has double contour the seam allowances are included. They are 1 cm unless specified otherwise.
- If the pattern has single contour, the seam allowances are NOT included and need to be added when laying out the pattern.

Note on length of fabric:

Attention! The amount of fabric needed for your pattern is not included. It will depend on the selected pattern size, the width, and design of the fabric you plan to use. First, print all the paper patterns and lay them out at the width of fabric you plan to use (usually from 90 to 150 cm). Measure how much fabric you will need. Don't forget to account for pieces that need to be cut multiple times and pieces that are cut on the fold.



CUTTING:

Main fabric:

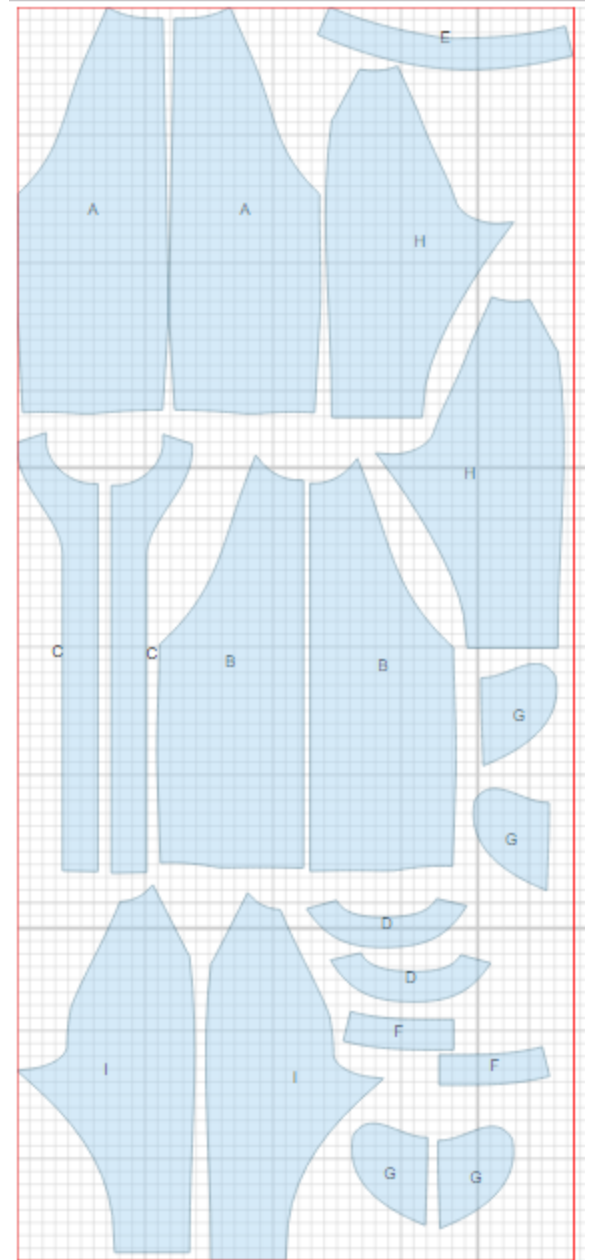
1. Back - cut 2 (A)
2. Front – cut 2 (B)
3. Front facing - cut 2 (C)
4. Back neck facing - cut 2 (D)
5. Back hem facing - cut 1 (E)
6. Front hem facing - cut 2 (F)
7. Back sleeve - cut 2 (H)
8. Front sleeve - cut 2 (I)

Lining:

1. Pocket bag - cut 4 (G)

Fusible interfacing:

1. Front facing - cut 2 (C)
2. Back neck facing - cut 1 (D)
3. Back hem facing - cut 1 (E)
4. Front hem facing - cut 2 (F)



INSTRUCTIONS:

1. Apply fusible interfacing to listed pieces.
2. Sew darts on backs. Press bulk towards center. Sew darts on sleeves. Press bulk upwards.
3. Sew center back seam. Serge and press seam open.
4. Sew back sleeve to back. Serge and press seam open. Sew front sleeve to front. Serge and press seam open.
5. Sew outer back neck facing to back, press seam towards facing.
6. Sew pocket bags to fronts and back.
7. Sew upper sleeve seam. Serge and press seam open. Sew lower sleeve seam, side seam and pocket bags with one continuous stitch. Press seam open trimming corner on front, and serge.
8. Sew shoulder seams of inner back neck facing and front facings. Press seams open. Serge outer edge.
9. Pin front facings to fronts right sides together, and sew along front edge and neckline inserting zipper. Clip seam on curves, turn front bands right side out, straighten and press. Make a fastening stitch into outer facing connecting seam. Sew shoulder pads.
10. Sew side seams of hem facings. Press seams open. Serge outer edge. Sew hem facing to front facings. Pin facing to jacket right sides together, and sew along lower corner and lower edge. Turn facing to inside, straighten and press. Tack facing to side seams and to center back seam.

TECHNICAL DRAWING:

