

Recommendations on fabric: natural/mixed fabric suitable for blouses / silk.

You will also need: fusible interfacing, 6 buttons.

Seam allowances: 1 cm for all seams, 2 cm for garment hem and lower edge of sleeves.

**Note on seam allowances:**

- If the pattern has double contour the seam allowances are included. They are 1 cm unless specified otherwise.
- If the pattern has single contour, the seam allowances are NOT included and need to be added when laying out the pattern.

**Note on length of fabric:**

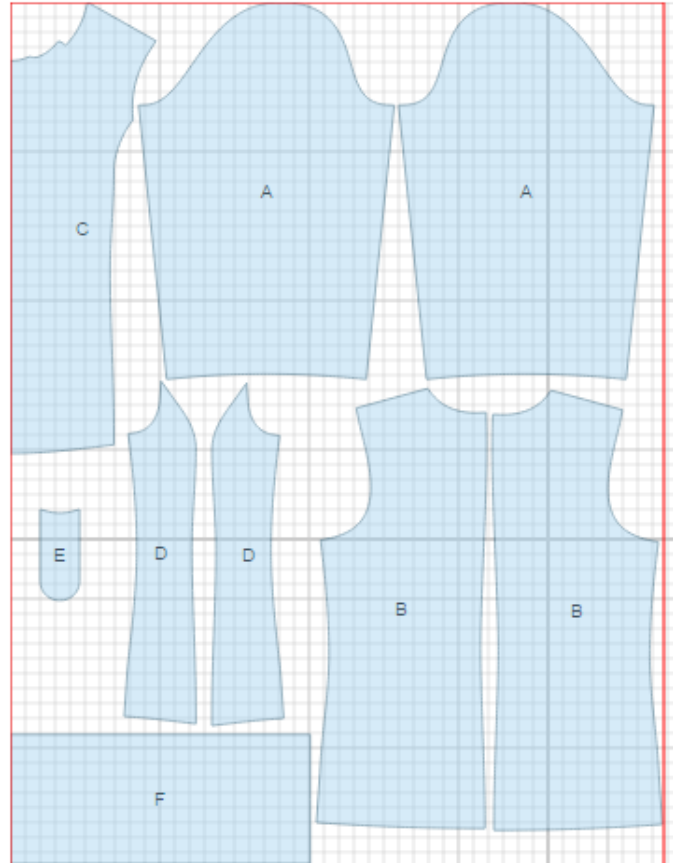
*Attention! The amount of fabric needed for your pattern is not included. It will depend on the selected pattern size, the width, and design of the fabric you plan to use. First, print all the paper patterns and lay them out at the width of fabric you plan to use (usually from 90 to 150 cm). Measure how much fabric you will need. Don't forget to account for pieces that need to be cut multiple times and pieces that are cut on the fold.*



## CUTTING:

### Main fabric:

1. Sleeve - cut 2 (A)
2. Back – cut 2 (B)
3. Front - cut 1 on fold (C)
4. Side -cut 2 (D)
5. Facing - cut 1 (E)
6. Collar - cut 1 (F)



### Fusible interfacing:

1. Facing - cut 1 (E)

---

**INSTRUCTIONS:**

1. Apply interfacing to facing.
2. Serge outer edge of facing. Pin facing to front right sides together and sew along slit. Make a vertical cut into allowance of slit opening. Trim seam allowances of slit, turn facing to inside. Press.
3. Sew side fronts to center front. Serge and press seams towards center. Make and fasten pleats on front.
4. Serge separately center back edges. Sew center back seam from mark down to hem. Press seam open pressing the slit. Make a stitch at 0.2 cm along slit.
5. Sew side and shoulder seams. Serge and press seams towards back.
6. Cut a bias tape of 3 cm wide and 25 cm long. Fold bias tape in half lengthwise right sides together and sew at 0.3 cm from the fold. Trim seam, turn piece right side out. Cut into loops.
7. Fold collar piece in half right sides together and sew side edges inserting loops. Trim seams. Turn collar right side out and press. Sew outer collar into neckline. Turn inner collar edge under and topstitch into connecting seam.
8. Sew sleeve seam, serge and press seam towards back. Make a gathering stitch along sleeve cap to adjust ease. Sew sleeves into armholes matching marks and adjusting ease. Serge and press seams.
9. Serge hem of blouse and lower edge of sleeves, turn under, press and topstitch.
10. Make a pleat on sleeve as marked and sew at 0.1 cm from fold inserting loops.
11. Sew buttons on collar and sleeves.

TECHNICAL DRAWING:

