

Recommendations on fabric: natural/mixed suiting fabric, contrast fabric for neckline.

You will also need: fusible interfacing, lining; shoulder pads, sleeve heads, 1 button.

Seam allowances: 1 cm for all seams, 3 cm for garment hem and lower edge of sleeve, 2 cm for lower and side edges of pocket bags, 2 cm for side edges of frames.

**Note on seam allowances:**

- If the pattern has double contour the seam allowances are included. They are 1 cm unless specified otherwise.
- If the pattern has single contour, the seam allowances are NOT included and need to be added when laying out the pattern.

**Note on length of fabric:**

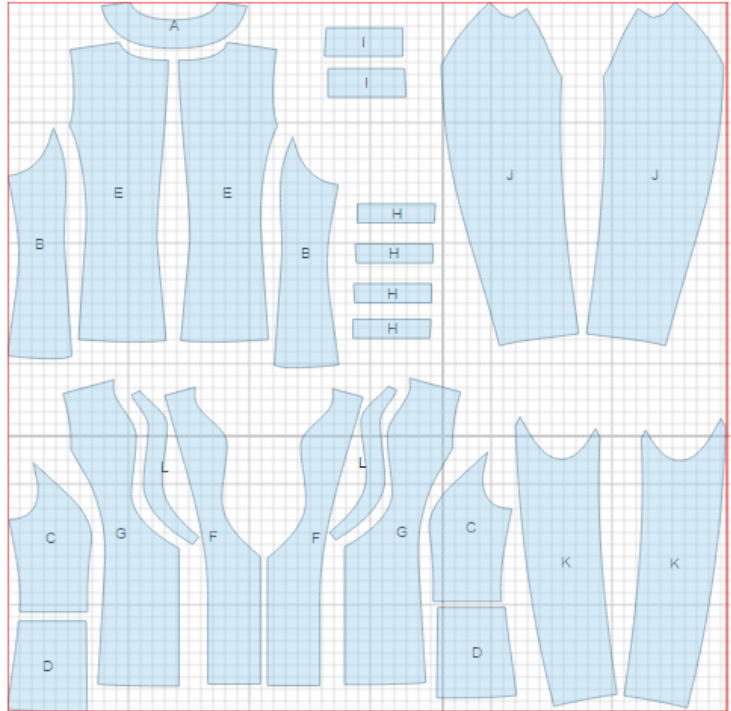
*Attention! The amount of fabric needed for your pattern is not included. It will depend on the selected pattern size, the width, and design of the fabric you plan to use. First, print all the paper patterns and lay them out at the width of fabric you plan to use (usually from 90 to 150 cm). Measure how much fabric you will need. Don't forget to account for pieces that need to be cut multiple times and pieces that are cut on the fold.*



## CUTTING:

### Main fabric:

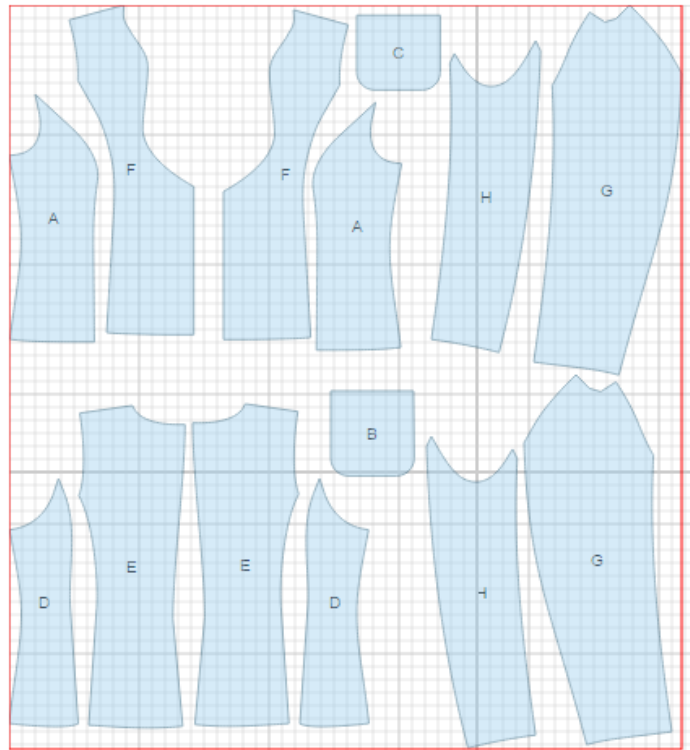
1. Back neck facing - cut 1 (A)
2. Side back – cut 2 (B)
3. Side upper front – cut 2 (C)
4. Side lower front - cut 2 (D)
5. Center back – cut 2 (E)
6. Front facing - cut 2 1 (F)
7. Center front - cut 2 (G)
8. Pocket frame - cut 4 (H)
9. Underlay piece - cut 4 (I)
10. Upper sleeve – cut 2 (J)
11. Lower sleeve – cut 2 (K)
12. Neck trimming - cut 2 (L)



### Lining:

1. Side front – cut 2 (A)
2. Large pocket bag – cut 1 (B)
3. Small pocket bag - cut 1 (C)
4. Side back – cut 2 (D)
5. Center back - cut 2 (E)
6. Center front - cut 2 (F)
7. Upper sleeve – cut 2 (G)
8. Lower sleeve – cut 2 (H)

\*ATTENTION: Lining is cut using main fabric patterns excluding the width of front facing. Add a pleat on lining.



Fusible interfacing: center front, back neck facing, front facing, pocket frames, neck trimming.

### INSTRUCTIONS:

1. Apply interfacing to listed pieces as well as to hem of jacket and sleeves.
2. Sew side backs to center backs. Press seams towards center. Sew center back seam, press seam open.
3. Sew neck trimming to front. Trim seams to 0.5 cm, clip on curves and press open.
4. Fold pocket frames in half lengthwise right side out and press. Sew frames to upper and lower side fronts. Serge lower edge of underlay piece. Place underlay piece on upper pocket bag, level upper edges and topstitch onto pocket bag along upper and lower edges. Place big pocket bag on upper frame and sew. Sew small pocket bag to lower frame. Turn pocket bags to inside and direct downwards. Sew pocket bags together.
5. Sew side fronts to center fronts. Press seams towards center.
6. Sew side and shoulder seams. Press seams open.
7. Sew and press open shoulder and side seams of back neck facing and front facings. Pin facing to front right sides together and sew along front edge, neckline and lower corner leaving 1.5 cm to front facing edge. Trim seam in corners, clip on curves. Turn front facings to inside, straighten and press.
8. Cut sleeve in upper part, along upper edge of cap to seam allowance to 0.5 cm on each side. Sew shoulder seam continuation on sleeve. Press seam open. Sew upper part of cap to sleeve. Gradually bring stitch to nought. Sew and press open elbow seam. Press hem of sleeve. Sew and press open front sleeve seam. Make a gathering stitch along sleeve cap to adjust ease. Sew sleeve into armhole matching notches and adjusting ease. Sew shoulder pads. Sew sleeve heads to new line of sleeve curve.
9. Sew lining pieces together leaving an opening in left front seam of sleeve. Sew lining to outer edges of facing. Turn lower edge of jacket under and press. Sew lining to lower edge of jacket and lower edge of sleeve. Turn jacket right side out through the opening in sleeve. Sew opening in sleeve closed.
10. Make buttonhole on right front. Sew button on left front.

TECHNICAL DRAWING:

