

Recommendations on fabric: natural or mixed fabric suitable for coats.

You will also need: fusible interfacing, lining, 4 buttons.

Seam allowances: all seams 1 cm. Seam allowance for hem - 2.5 cm.

Note on seam allowances:

- If the pattern has double contour the seam allowances are included. They are 1 cm unless specified otherwise.
- If the pattern has single contour, the seam allowances are NOT included and need to be added when laying out the pattern.

Note on length of fabric:

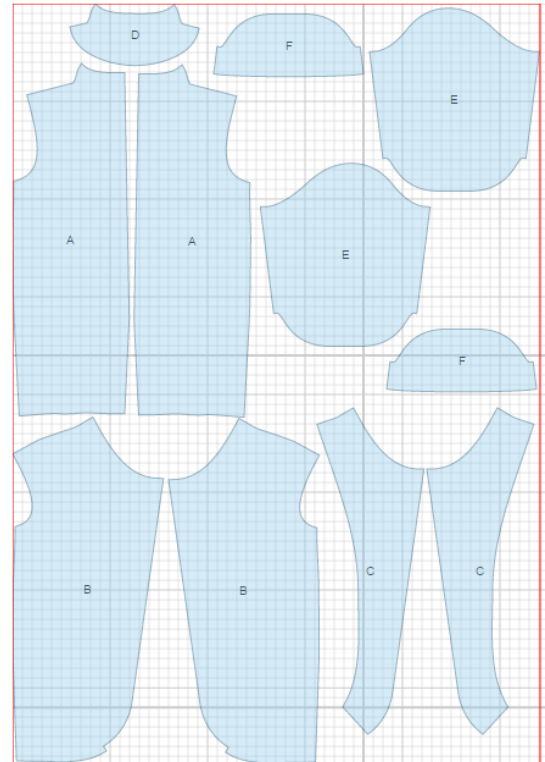
Attention! The amount of fabric needed for your pattern is not included. It will depend on the selected pattern size, the width, and design of the fabric you plan to use. First, print all the paper patterns and lay them out at the width of fabric you plan to use (usually from 90 to 150 cm). Measure how much fabric you will need. Don't forget to account for pieces that need to be cut multiple times and pieces that are cut on the fold.



CUTTING:

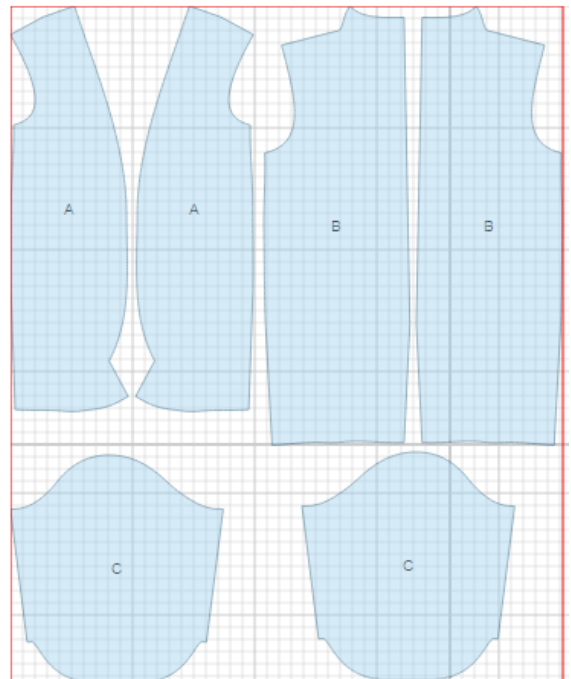
Main fabric:

1. Back - cut 2 (A)
2. Front - cut 2 (B)
3. Front facing - cut 2 (C)
4. Back neck facing - cut 1 (D)
5. Sleeve - cut 2 (E)
6. Sleeve facing - cut 2 (F)



Lining:

1. Front - cut 2 (A)
2. Back - cut 2 (B)
3. Sleeve - cut 2 (C)



*ATTENTION: Lining is cut using main fabric patterns excluding the width of facing. Add a pleat on lining.

Fusible interfacing:

1. Front facing - cut 2 (C)
2. Back neck facing - cut 1 (D)

INSTRUCTIONS:

1. Apply fusible interfacing to listed pieces.
2. Sew darts on fronts. Press bulk towards center.
3. Sew center back seam and press open. Sew darts on back. Press bulk towards center.
4. Sew side and shoulder seams. Press seams open.
5. Make inner buttonholes on right front facing. Sew and press open shoulder seams of front facings and back neck facing.
6. Pin front facing to front right sides together and sew along front edge and neckline. Turn facings to inside, straighten seams.
7. Sew sleeve seam and press open. Sew seam of sleeve facing and press open. Pin sleeve facing to sleeve right sides together and sew lower edge. Turn facing to inside and press. Make a gathering stitch along sleeve cap to adjust ease. Sew sleeves into armholes matching notches and adjusting ease.
8. Sew lining pieces together, leaving a slit open in left front sleeve seam (for turning garment right side out).
9. Sew lining to inner edges of facings.
10. Turn hem of coat under. Sew lining to hem of jacket and lower edge of sleeve. Turn jacket out through the opening in sleeve. Sew opening closed.
11. Make buttonholes on left front. Sew buttons on right front from inside.

TECHNICAL DRAWING:

