

Recommendations on fabric: natural or mixed low - stretch knit fabric.

You will also need: fusible interfacing; lining; 5 buttons; raglan shoulder pads; 6 hooks with eyelets.

Seam allowances: all seams -1 cm, on hems - 3.0 cm.

Note on seam allowances:

- If the pattern has double contour the seam allowances are included. They are 1 cm unless specified otherwise.

- If the pattern has single contour, the seam allowances are NOT included and need to be added when laying out the pattern.

Note on length of fabric:

Attention! The amount of fabric needed for your pattern is not included. It will depend on the selected pattern size, the width, and design of the fabric you plan to use. First, print all the paper patterns and lay them out at the width of fabric you plan to use (usually from 90 to 150 cm). Measure how much fabric you will need. Don't forget to account for pieces that need to be cut multiple times and pieces that are cut on the fold.



CUTTING:

Main fabric:

1. Back sleeve – cut 2 (A)
2. Front sleeve – cut 2 (B)
3. Back – cut 1 on fold (C)
4. Front - cut 2 (D)
5. Collar - cut 1 (E)
6. Back neck facing - cut 1 (F)
7. Front facing - cut 2 (G)
8. Off-set welt - cut 2 (H)
9. Big pocket bag - cut 2 (I)
10. Small pocket bag - cut 2 (J)

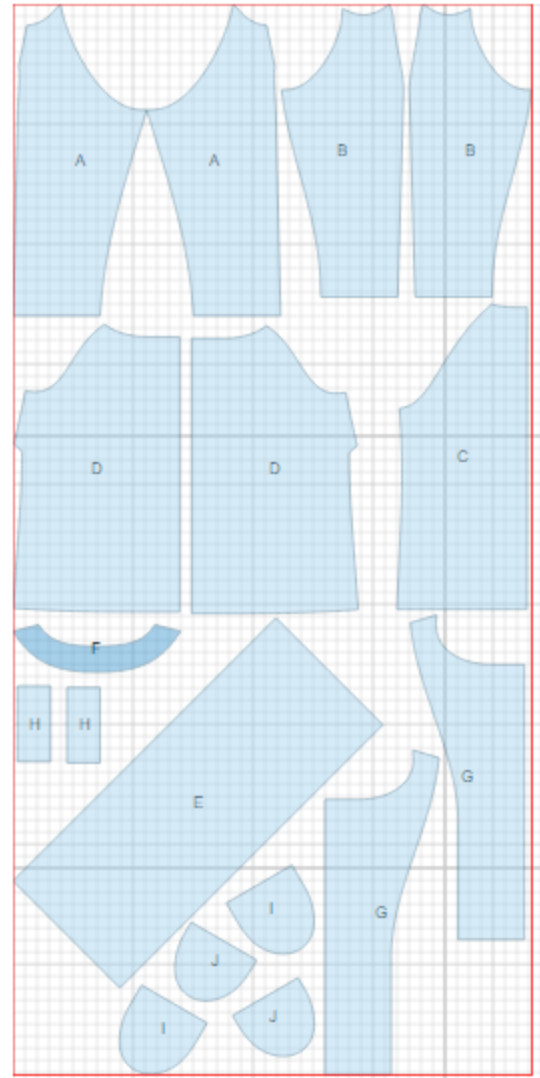
Lining:

1. Back sleeve – cut 2 (A)
2. Front sleeve – cut 2 (B)
3. Back – cut 1 on fold (C)
4. Front - cut 2 (D)
5. Big pocket bag - cut 2 (I)
6. Small pocket bag - cut 2 (J)

*ATTENTION: Lining is cut using main fabric patterns excluding the width of facing. Add a pleat on lining.

Fusible interfacing:

1. Collar - cut 1 (E)
2. Front facing - cut 2 (G)
3. Off-set welt - cut 2 (H)
4. Back neck facing - cut 1 (F)



INSTRUCTIONS:

1. Apply interfacing to listed pieces.
2. Sew darts on fronts. Press bulk upwards.
3. Mark pocket location on fronts. Press welt in half lengthwise wrong sides together. Topstitch small pocket bag on inner side of off-set welt. Sew off-set welt to front on lower line of pocket marking. Sew big pocket bag to front on upper line of pocket marking. End stitching at short lines of marking. Cut pocket opening. Make cuts to corners to pocket opening ends. Turn off-set welt and big pocket bag to inside through the opening. Fasten pocket ends from wrong side with back double stitch. Sew pocket bags together.
4. Sew back sleeves to back. Press seams. Sew front sleeves to front. Press seams towards sleeve.
5. Sew upper sleeve seam. Press seam towards back. Sew side and lower sleeve seam with one continuous stitch. Press seam towards back. Sew shoulder pads.
6. Sew and press open shoulder seams of back neck facing and front facings. Pin facing onto front of jacket, right sides together. Sew center front and lower corners.
7. Fold collar in half lengthwise right sides together and sew ends. Trim seam in corners. Turn collar right side out and press.
8. Sew outer collar into neckline. Sew inner collar into neckline of neck facing. Press seams open. Fasten collar seams close to stitches.
9. Sew lining pieces together, leaving a slit open in left side seam. Sew lining to inner edges of facings and neck facing.
10. Sew lining to hem of jacket and lower edge of sleeve. Turn jacket out through the opening in left side seam. Sew opening closed.
11. Sew hooks on right front. Sew eyelets on left front.

TECHNICAL DRAWING:

