

Recommendations on fabric: lightweight natural or mixed suiting fabric.

You will also need: fusible interfacing, invisible zipper.

Seam allowances: hems - 3.0 cm, other seams –1.0 cm.

Note on seam allowances:

- If the pattern has double contour the seam allowances are included. They are 1 cm unless specified otherwise.
- If the pattern has single contour, the seam allowances are NOT included and need to be added when laying out the pattern.

Note on length of fabric:

Attention! The amount of fabric needed for your pattern is not included. It will depend on the selected pattern size, the width, and design of the fabric you plan to use. First, print all the paper patterns and lay them out at the width of fabric you plan to use (usually from 90 to 150 cm). Measure how much fabric you will need. Don't forget to account for pieces that need to be cut multiple times and pieces that are cut on the fold.



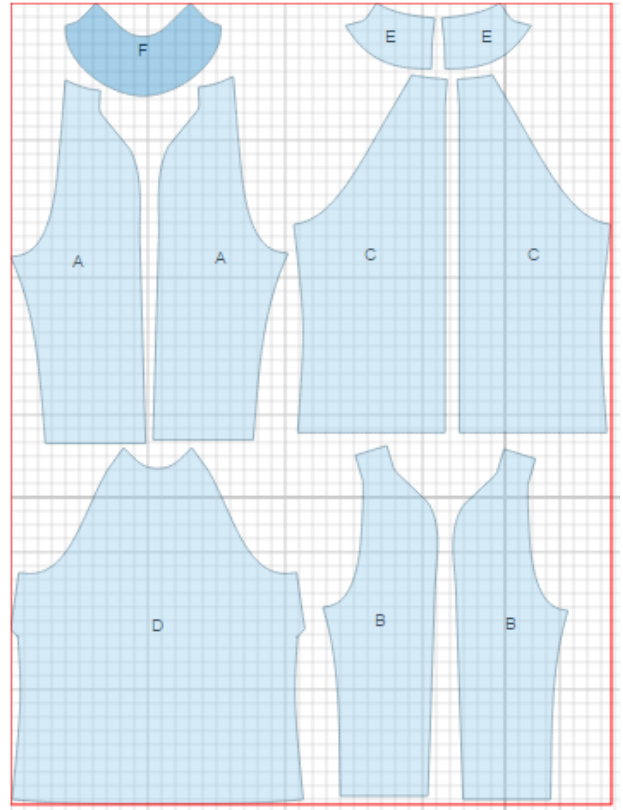
CUTTING:

Main fabric:

1. Back sleeve – cut 2 (A)
2. Front sleeve - cut 2 (B)
3. Back - cut 2 (C)
4. Front - cut 1 (D)
5. Back neck facing - cut 2 (E)
6. Front neck facing - cut 1 (F)

Fusible interfacing:

1. Back neck facing - cut 2 (E)
2. Front neck facing - cut 1 (F)



INSTRUCTIONS:

1. Apply fusible interfacing to facings.
2. Sew darts on front. Press bulk upwards.
3. Sew separately center back edges. Sew center back seam from zipper mark down to hem. Press seam open pressing the slit for zipper. Install zipper.
4. Sew back sleeves to back, serge and press seam towards sleeve. Sew front sleeves to front, serge and press seam towards sleeve.
5. Sew upper sleeve seam. Serge and press seam towards back. Sew side and lower sleeve seam with one continuous stitch. Serge and press seam towards back.
6. Sew shoulder seams of facings and press open. Serge outer edge. Pin facing to blouse right sides together and sew neckline. Clip seam on curves. Turn facing to inside, straighten and press. Tack facing to shoulder seams and zipper tape.
7. Turn hems under at 1 cm and press. Then turn again at 2 cm and topstitch.

TECHNICAL DRAWING:

