

Recommendations on fabric: lightweight denim.

You will also need: fusible interfacing.

Seam allowances: all seams – 1.0 cm.

Note on seam allowances:

- If the pattern has double contour the seam allowances are included. They are 1 cm unless specified otherwise.
- If the pattern has single contour, the seam allowances are NOT included and need to be added when laying out the pattern.

Note on length of fabric:

Attention! The amount of fabric needed for your pattern is not included. It will depend on the selected pattern size, the width, and design of the fabric you plan to use. First, print all the paper patterns and lay them out at the width of fabric you plan to use (usually from 90 to 150 cm). Measure how much fabric you will need. Don't forget to account for pieces that need to be cut multiple times and pieces that are cut on the fold.



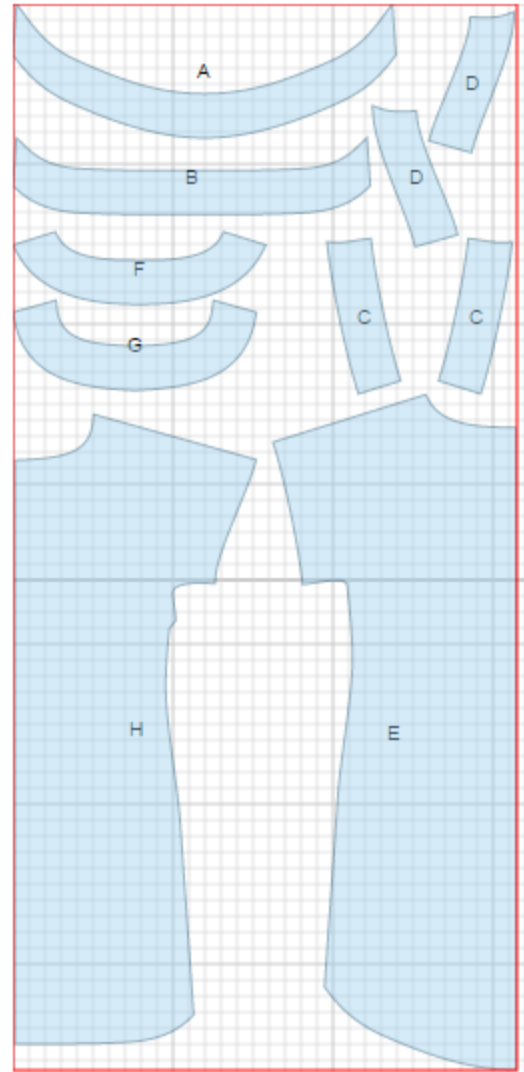
CUTTING:

Main fabric:

1. Back hem facing - cut 1 (A)
2. Front hem facing - cut 1 (B)
3. Back sleeve facing - cut 2 (C)
4. Front sleeve facing - cut 2 (D)
5. Back - cut 1 on fold (E)
6. Back neck facing - cut 1 (F)
7. Front neck facing - cut 1 (G)
8. Front - cut 1 on fold (H)

Fusible interfacing:

1. Back neck facing - cut 1 (F)
2. Front neck facing - cut 1 (G)



INSTRUCTIONS:

1. Apply fusible interfacing to neck facings.
2. Sew darts on front. Press bulk upwards.
3. Sew shoulder and side seams. Serge and press towards back.
4. Sew shoulder seams of neck facings. Serge outer edge. Pin facing and dress right sides together and sew. Clip seam on curves. Turn facing to inside and press. Topstitch at facing width.
5. Sew upper and lower seams of sleeve facings. Serge inner edge. Pin facing to lower edge of sleeve right sides together and sew. Turn facing to inside, straighten and press. Topstitch at facing width.
6. Sew side seams of back hem facing and front hem facing. Press seams open. Serge outer edge.
- 7.. Pin facing to lower edge of dress right sides together and sew. Turn facing to inside, straighten and press. Topstitch at facing width.

TECHNICAL DRAWING:

