

Recommendations on fabric: natural or mixed suiting fabric.

You will also need: interfacing; lining; 1 button; shoulder pads; sleeve heads.

Seam allowances: all seams -1 cm, on hems - 3.0 cm.

Note on seam allowances:

- If the pattern has double contour the seam allowances are included. They are 1 cm unless specified otherwise.

- If the pattern has single contour, the seam allowances are NOT included and need to be added when laying out the pattern.

Note on length of fabric:

Attention! The amount of fabric needed for your pattern is not included. It will depend on the selected pattern size, the width, and design of the fabric you plan to use. First, print all the paper patterns and lay them out at the width of fabric you plan to use (usually from 90 to 150 cm). Measure how much fabric you will need. Don't forget to account for pieces that need to be cut multiple times and pieces that are cut on the fold.



CUTTING:

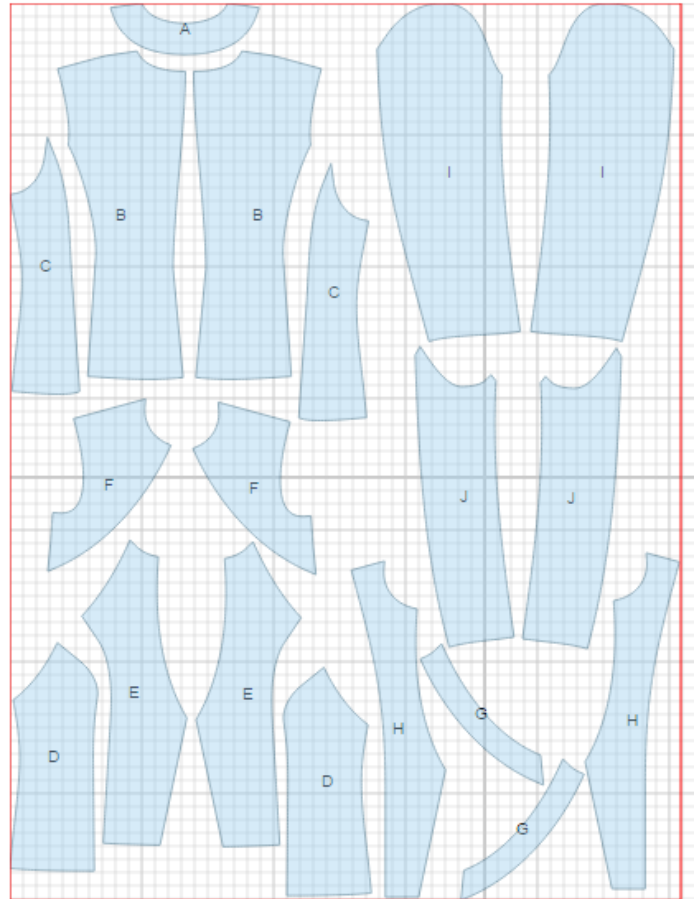
Main fabric:

1. Back neck facing – cut 1 (A)
2. Center back – cut 2 (B)
3. Side back – cut 2 (C)
4. Side front - cut 2 (D)
5. Center front - cut 2 (E)
6. Front yoke - cut 2 (F)
7. Yoke facing - cut 2 (G)
8. Front facing - cut 2 (H)
9. Upper sleeve – cut 2 (I)
10. Lower sleeve – cut 2 (J)

Lining:

1. Center back – cut 2 (B)
2. Side back – cut 2 (C)
3. Side front - cut 2 (D)
4. Center front - cut 2 (E)
5. Front yoke - cut 2 (F)
6. Upper sleeve – cut 2 (I)
7. Lower sleeve – cut 2 (J)

*ATTENTION: Lining is cut using main fabric patterns excluding the width of facing. Add a pleat on lining.



Fusible interfacing:

1. Center front – cut 2 (E)
2. Front facing - cut 2 (H)
3. Back neck facing – cut 1 (A)
4. Yoke facing - cut 2 (G)

INSTRUCTIONS:

1. Apply interfacing to listed pieces, as well as to hem of the garment, hem of sleeves and back neckline.
2. Sew and press darts towards center on back. Sew side backs to center backs and press seams towards center. Sew center back seam and press seam open.
3. Sew side fronts to center fronts and press seams towards center.
4. Pin front yoke facing to front yoke right sides together and sew lower edge. Grade seams, turn facing to inside and press. Place front and yoke facing right sides together and sew. Press seam open.
5. Sew shoulder and side seams of jacket. Press seams open.
6. Sew and press open elbow seam of sleeve. Press hem of sleeve. Sew and press open front sleeve seam. Make a gathering stitch along sleeve cap to adjust ease. Sew sleeves into armholes matching notches, and adjusting ease. Sew in shoulder pads and sleeve heads.
7. Sew lining pieces together, leaving a slit open in right front sleeve seam. Sew shoulder seams of back to neckline facing and front facings. Press seams open. Sew lining to back neck facing and front facings.
8. Pin facing onto front of jacket, right sides together. Sew center front and neckline. Sew lower edges of front facings to front exactly on hem turn-up marking, leaving 1.5 cm to inner edge of facing. Trim corners. Turn jacket right side out, straighten and press seams. Press hem of jacket to inside. Sew lining to hem of jacket and hem of sleeves. Turn jacket right side out through the opening in sleeve. Sew opening closed.
9. Make a buttonhole on right front, sew a button on left front.

TECHNICAL DRAWING:

