

Recommendations on fabric: natural or mixed soft suiting fabric.

You will also need: fusible interfacing.

Seam allowances: on hem of sleeve - 2.0 cm, hem of pullover- 3.0 cm, other seams -1.0 cm.

Note on seam allowances:

- If the pattern has double contour the seam allowances are included. They are 1 cm unless specified otherwise.
- If the pattern has single contour, the seam allowances are NOT included and need to be added when laying out the pattern.

Note on length of fabric:

Attention! The amount of fabric needed for your pattern is not included. It will depend on the selected pattern size, the width, and design of the fabric you plan to use. First, print all the paper patterns and lay them out at the width of fabric you plan to use (usually from 90 to 150 cm). Measure how much fabric you will need. Don't forget to account for pieces that need to be cut multiple times and pieces that are cut on the fold.



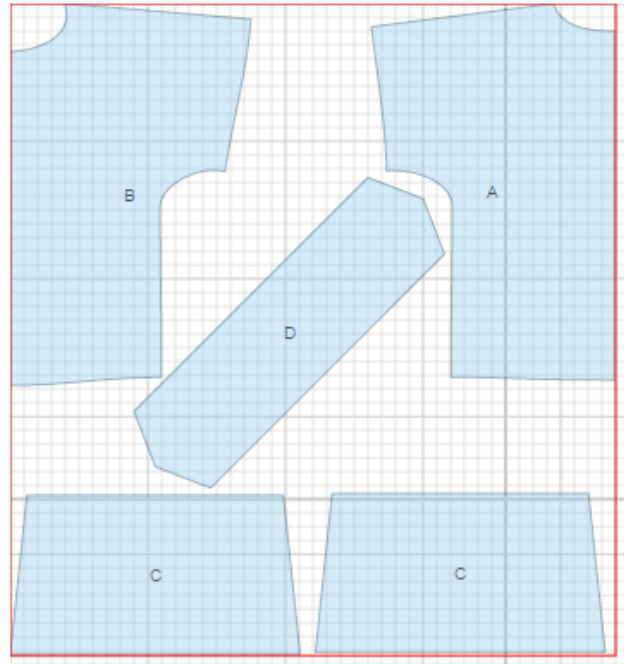
CUTTING:

Main fabric:

1. Back – cut 1 on fold (A)
2. Front - cut 1 on fold (B)
3. Sleeve - cut 2 (C)
4. Collar - cut 1 (D)

Fusible interfacing:

1. Collar - cut 1 (D)



INSTRUCTIONS:

1. Apply fusible interfacing to collar.
2. Sew shoulder seams, serge and press towards back.
3. Sew sleeves to jumper, serge and press seams towards sleeve.
4. Sew side seam and sleeve seam with one continuous stitch. Serge and press seams towards back.

5. Fold collar in half lengthwise right sides together and sew corners. Start and finish stitch exactly at marked line of collar connection. Trim seams in corners and turn collar right side out. Press. Sew outer collar into neckline. Turn edge of inner collar under and topstitch into connecting seam.

6. Serge lower edge of blouse and sleeves, turn under, press and slipstitch.

TECHNICAL DRAWING:

