

Recommendations on fabric: natural/mixed fabric lycra.

You will also need: knit bias tape (length is mentioned on front pattern piece); invisible zipper.

Seam allowances: upper shoulder edge, lower edge of sleeve, upper edge of trimming and sleeve - 0.5 cm; lower edge of trimming and cuff - 0 cm; hem - 2.0 cm, other seams - 1.0 cm.

**Note on seam allowances:**

- If the pattern has double contour the seam allowances are included. They are 1 cm unless specified otherwise.
- If the pattern has single contour, the seam allowances are NOT included and need to be added when laying out the pattern.

**Note on length of fabric:**

*Attention! The amount of fabric needed for your pattern is not included. It will depend on the selected pattern size, the width, and design of the fabric you plan to use. First, print all the paper patterns and lay them out at the width of fabric you plan to use (usually from 90 to 150 cm). Measure how much fabric you will need. Don't forget to account for pieces that need to be cut multiple times and pieces that are cut on the fold.*

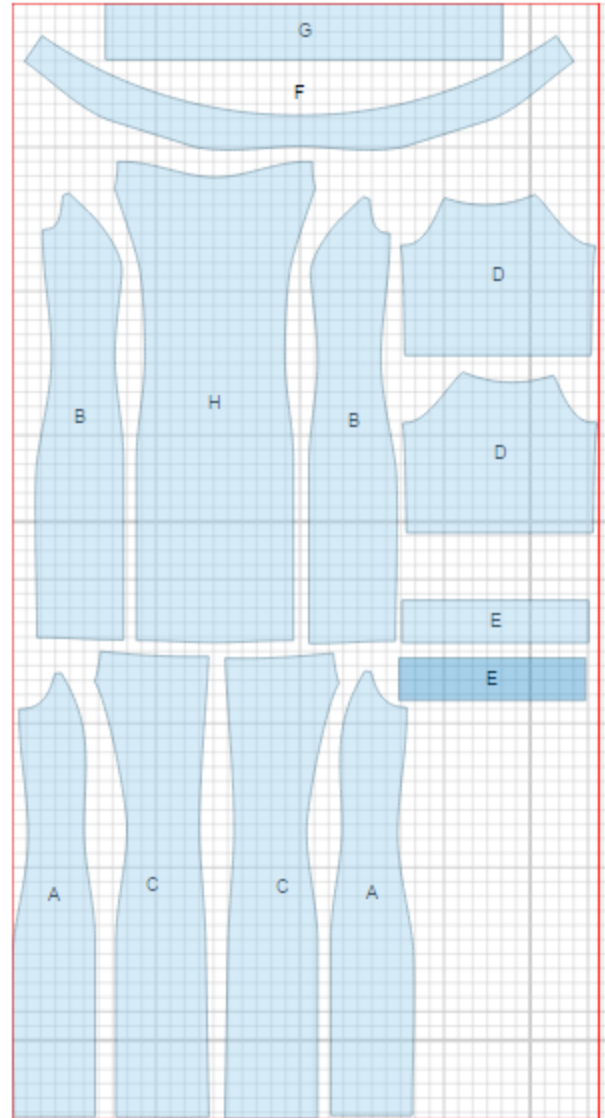


## CUTTING:

### Main fabric:

1. Side back - cut 2 (A)
2. Side front - cut 2 (B)
3. Center back - cut 2 (C)
4. Sleeve - cut 2 (D)
5. Cuff - cut 2 (E)
6. Collar (Trimming) - cut 1 (F)
7. Bow - cut 1 (G)
8. Center front- cut 1 (H)

1.



---

**INSTRUCTIONS:**

1. Serge separately center back edges. Sew center back seam from zipper mark down to hem, press seam open. Install zipper. Sew side backs to center backs. Serge and press seams towards center.
2. Sew side fronts to center front. Serge and press seams towards center.
3. Sew side seams. Serge and press seams towards back.
4. Sew sleeve seam. Serge. Sew cuff into ring. Serge seam. Place cuff and sleeve wrong sides together and sew. Finish seam with bias tape. Press seam towards sleeve and topstitch at 0.3 cm from bias fold. Finish lower edge of sleeve with bias tape. Sew sleeve into lower part of armhole. Serge seam.
5. Finish lower end center edges of collar with bias tape. Place collar on dress with wrong side down and pin on upper edge. Finish seam with bias tape.
6. Serge lower edge of dress, fold under, press and topstitch.
7. Fold bow in half lengthwise right sides together and finish with bias tape on all sides. Tie the bow and sew on dress as shown on technical drawing.

TECHNICAL DRAWING:

