

Recommendations on fabric: natural or mixed dress fabric of two colours with lycra.

You will also need: dress zipper.

Seam allowances: hem – 2.0 cm, other seams – 1.0 cm.

**Note on seam allowances:**

- If the pattern has double contour the seam allowances are included. They are 1 cm unless specified otherwise.

- If the pattern has single contour, the seam allowances are NOT included and need to be added when laying out the pattern.

**Note on length of fabric:**

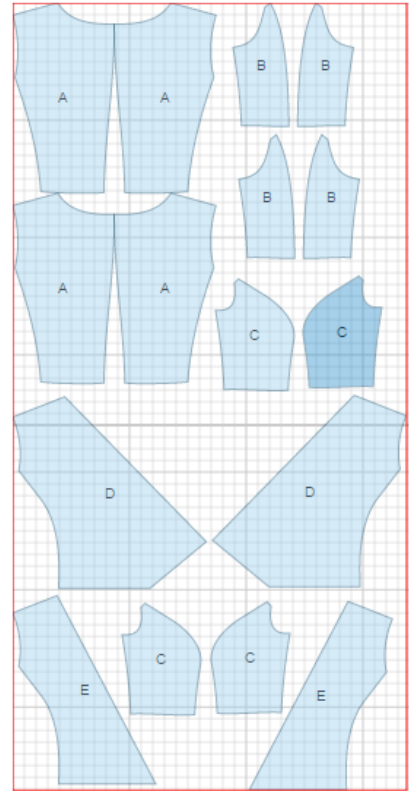
*Attention! The amount of fabric needed for your pattern is not included. It will depend on the selected pattern size, the width, and design of the fabric you plan to use. First, print all the paper patterns and lay them out at the width of fabric you plan to use (usually from 90 to 150 cm). Measure how much fabric you will need. Don't forget to account for pieces that need to be cut multiple times and pieces that are cut on the fold.*



## CUTTING:

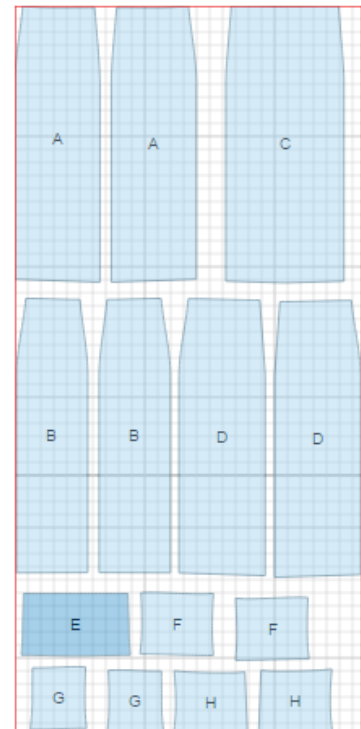
### Main fabric 1:

1. Upper back - cut 4 (A)
2. Side upper back - cut 4 (B)
3. Side upper front - cut 4 (C)
4. Right upper front - cut 2 (D)
5. Left upper front - cut 2 (E)



### Main fabric 2:

1. Center lower back - cut 2 (A)
2. Side lower back - cut 2 (B)
3. Center lower front - cut 1 (C)
4. Side lower front - cut 2 (D)
5. Center front insert - cut 1 (E)
6. Side front insert - cut 2 (F)
7. Side back insert - cut 2 (G)
8. Center back insert - cut 2 (H)



---

**INSTRUCTIONS:**

1. Sew side backs to center backs, side fronts to center front. Press seams towards center.
2. Sew inner side backs to inner center backs, inner side fronts to inner center front. Press seams towards center. Sew side seams of inner parts. Press seams open.
3. Pin right upper fronts right sides together and sew along collar. Trim seam in corner, turn right side out and press. Turn collar towards side at shoulder seam section and fasten. Sew on left front edges. Sew on back neckline. Clip seam on curves. Sew shoulder seams inserting front pieces between inner and outer back.
4. Sew armholes in two steps: front armhole, then back armhole. Clip into seams on curves. Turn bodice right side out and press. Lay right front over left front, pin on lower edge and then sew as one piece.
5. Sew inserts to skirts. Serge and press seams towards inserts. Sew side and front seams, serge. Press front seams towards center, side seams - towards back. Serge separately center back edges. Sew center back seam from zipper mark down to hem.
6. Sew bodice to skirt. Serge and press seam towards insert. Make a decorative stitch on insert at 0.5 cm from connecting seams.
7. Install zipper.
8. Serge lower edge of dress, fold to wrong side, press and slip-stitch.

TECHNICAL DRAWING:

