

Recommendations on fabric: natural or mixed dress fabric.

You will also need: fusible interfacing, invisible zipper.

Seam allowances: hem – 2.0 cm, along vent - 2.0 cm, other seams – 1.0 cm.

Note on seam allowances:

- If the pattern has double contour the seam allowances are included. They are 1 cm unless specified otherwise.
- If the pattern has single contour, the seam allowances are NOT included and need to be added when laying out the pattern.

Note on length of fabric:

Attention! The amount of fabric needed for your pattern is not included. It will depend on the selected pattern size, the width, and design of the fabric you plan to use. First, print all the paper patterns and lay them out at the width of fabric you plan to use (usually from 90 to 150 cm). Measure how much fabric you will need. Don't forget to account for pieces that need to be cut multiple times and pieces that are cut on the fold.



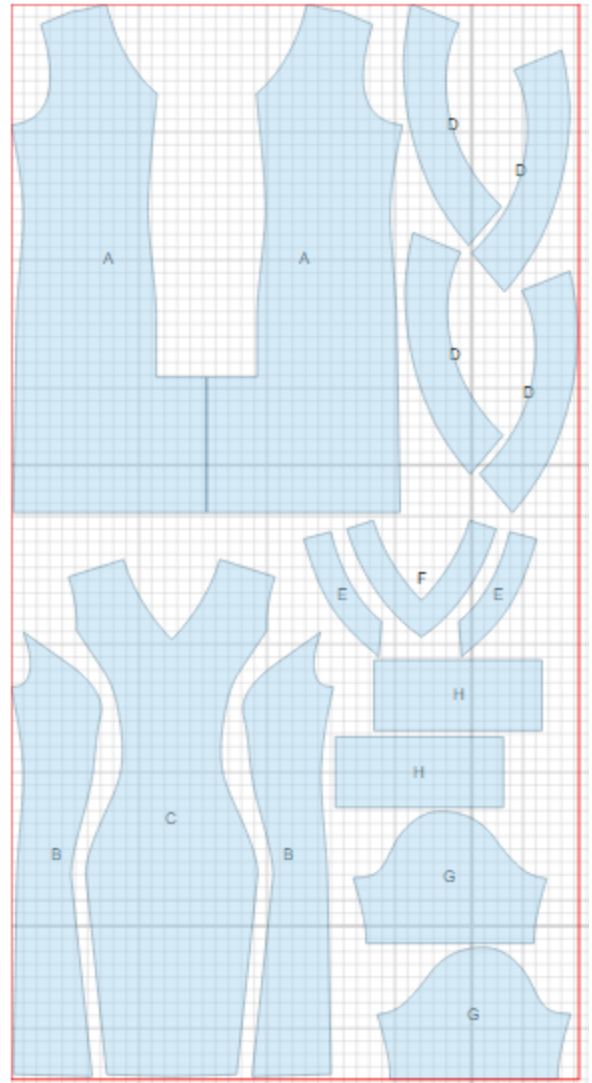
CUTTING:

Main fabric:

1. Back - cut 2 (A)
2. Side front - cut 2 (B)
3. Center front - cut 1 (C)
4. Collar - cut 4 (D)
5. Back neck facing - cut 2 (E)
6. Front neck facing - cut 1 (F)
7. Sleeve - cut 2 (G)
8. Cuff - cut 2 (H)

Fusible interfacing:

1. Front neck facing - cut 1 (F)
2. Back neck facing - cut 2 (E)
3. Collar - cut cut 2 (D)
4. Cuff - cut 2 (H)



INSTRUCTIONS:

1. Apply fusible interfacing to collar pieces and neck facings.
2. Sew darts on back, press bulk towards center.
3. On left lower back, along vertical vent edge, cut off 5 cm. Apply fusible interfacing to wrong side of the vent on both back pieces. On right side mark center seam line (vent fold-line). Press left side along vent fold line. On right side, press seam allowance to wrong side of vent (6 cm). Match backs on center seam and fasten on upper edge of vent. Serge center back seam separately on each side. Serge vent seam allowances. Sew center back seam from zipper mark to vent corner. Trim corner of vent seam allowance on right side. Press center seam open, press vent allowances and fasten them on right side with machine stitch. Install zipper.
4. Sew side fronts to front. Serge and press seams towards center.
5. Sew shoulder and side seams. Serge and press seams towards back.
6. Place collars right sides together and sew on outer edge and ends. Trim seam in corners. Turn collar out, straighten and press.
7. Sew shoulder seams of neck facings. Press seams open. Serge outer edge. Pin facing to dress, right sides together, insert collar between them and sew along neckline. Clip into seam on curves. Turn facing to the inside, straighten and press. Tack facing to shoulder seams and zipper tape.
8. Sew sleeve seam. Serge and press seam towards back. Make a gathering stitch along sleeve cap to adjust ease. Sew sleeves into armholes matching notches and adjusting ease. Serge and press seams.
9. Sew cuff into ring, press seam open. Fold cuff in half along center line right side out. Sew cuff to lower edge of sleeve from wrong side. Serge seam. Turn cuff to right side, press.
10. Serge lower edge of dress, fold to wrong side, press, and slipstitch.

TECHNICAL DRAWING:

