

Recommendations on fabric: low to medium stretch-knit, natural or mixed dress fabric.

You will also need: fusible interfacing, decorative closure.

Seam allowances: hem – 1.5 cm, other seams – 0.7 cm.

Note on seam allowances:

- If the pattern has double contour the seam allowances are included. They are 1 cm unless specified otherwise.
- If the pattern has single contour, the seam allowances are NOT included and need to be added when laying out the pattern.

Note on length of fabric:

Attention! The amount of fabric needed for your pattern is not included. It will depend on the selected pattern size, the width, and design of the fabric you plan to use. First, print all the paper patterns and lay them out at the width of fabric you plan to use (usually from 90 to 150 cm). Measure how much fabric you will need. Don't forget to account for pieces that need to be cut multiple times and pieces that are cut on the fold.



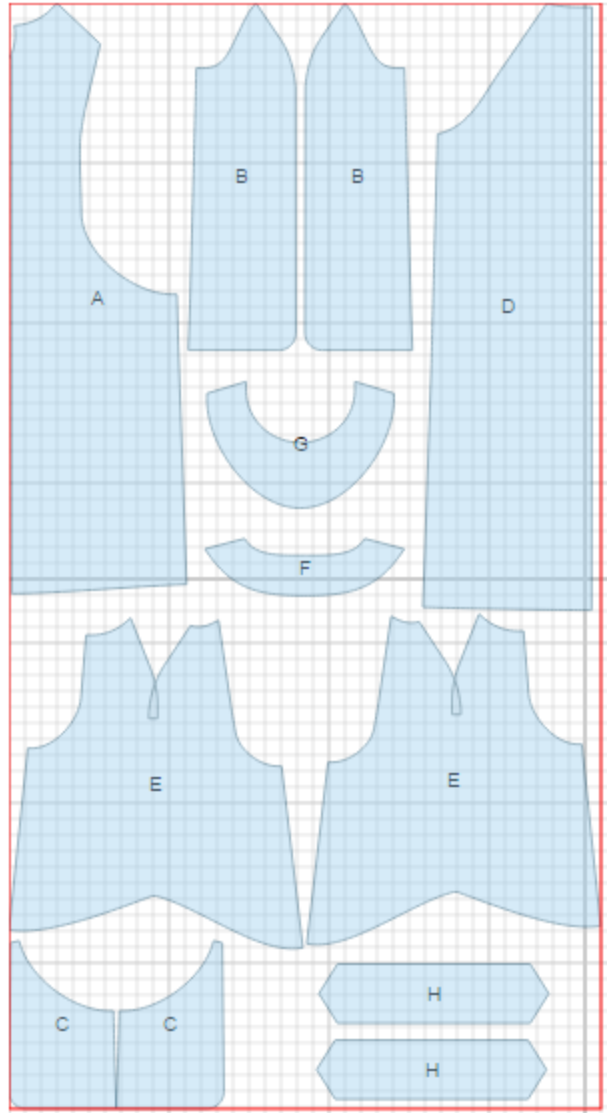
CUTTING:

Main fabric:

1. Front - cut 1 on fold (A)
2. Side front - cut 2 (B)
3. Pocket bag - cut 2 (C)
4. Back - cut 1 on fold (D)
5. Sleeve - cut 2 (E)
6. Back neck facing - cut 1 (F)
7. Front neck facing - cut 1 (G)
8. Cuff - cut 2 (H)

Fusible interfacing:

1. Back neck facing - cut 1 (F)
2. Front neck facing - cut 1 (G)



Advice: Knit fabric pieces are sewn together with special elastic or narrow zig-zag stitch. Seam allowance on hem is stitched with twin needles to save stretchiness. Pieces can also be sewn together with 3 or 4 – thread serger. When serging, cut seam allowances to 0.6 – 0.8 cm.

INSTRUCTIONS:

1. Place pocket bags on front, right sides together, and sew curved edge. Turn pocket bag to wrong side and press.
2. Pin side fronts on front and sew catching pocket bag edge. Serge seams.
3. Sew dart on sleeve, serge and press. Sew back part of sleeve to back, serge and press seam. Sew front part of sleeve to front, serge and press seam.
4. Sew sleeve and side seams. Serge and press seams.s.
5. Sew shoulder seams of neck facings, press open. Serge outer edge. Pin facing and dress right sides together and sew to neckline and front slit inserting decorative closure between the seam of facing and slit .. Trim seam in corners, turn facing to wrong side, straighten and press. Tack facing to raglan seams.
6. Fold cuff in half along center line ,right sides together Sew short ends. Turn right side out and press. Make a gathering stitch on the lower edge of sleeve and gather fullness. Sew cuff o sleeve laying right side of cuff over left. Serge seam.
7. Serge lower edge of dress, turn under, press and topstitch.

TECHNICAL DRAWING:

