

Recommendations on fabric: natural or mixed dress fabric.

You will also need: 12 buttons, fusible interfacing, invisible zipper.

Seam allowances: hem of dress – 1.2 cm, other seams – 1 cm.

Note on seam allowances:

- If the pattern has double contour the seam allowances are included. They are 1 cm unless specified otherwise.

- If the pattern has single contour, the seam allowances are NOT included and need to be added when laying out the pattern.

Note on length of fabric:

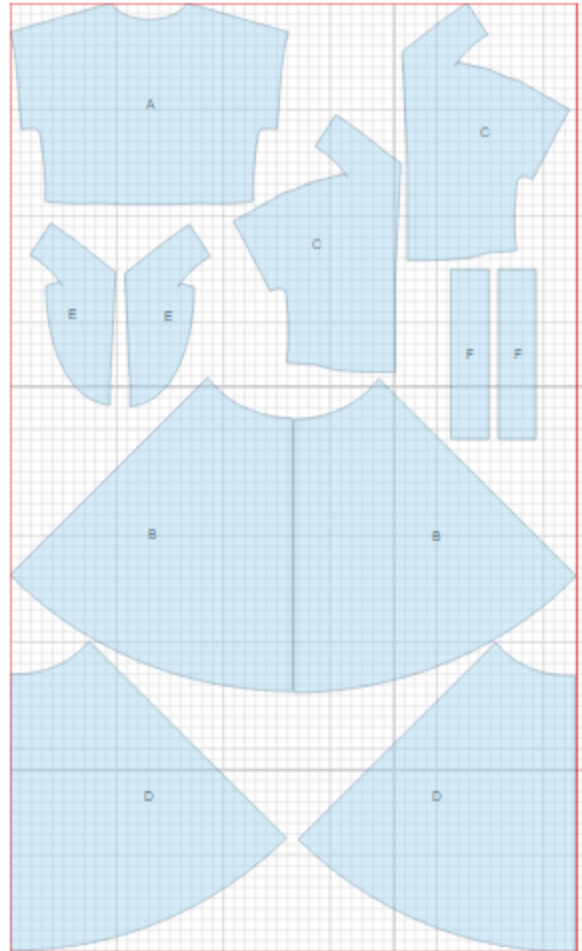
Attention! The amount of fabric needed for your pattern is not included. It will depend on the selected pattern size, the width, and design of the fabric you plan to use. First, print all the paper patterns and lay them out at the width of fabric you plan to use (usually from 90 to 150 cm). Measure how much fabric you will need. Don't forget to account for pieces that need to be cut multiple times and pieces that are cut on the fold.



CUTTING:

Main fabric:

1. Upper back - cut 1 (A)
2. Lower back/skirt - cut 2 (B)
3. Upper front - cut 2 (C)
4. Lower front/skirt - cut 2 (D)
5. Front facing - cut 2 (E)
6. Cuff - cut 2 (F)



Fusible interfacing:

1. Front facing - cut 2 (E)
2. Cuff - cut 2 (F)

INSTRUCTIONS:

1. Apply fusible interfacing to listed pieces.
2. Sew darts on upper back, press bulk towards center. Sew bodice backs to back skirts. Serge and press seams upwards.
3. Sew darts on upper fronts, press bulk towards center. Make and fasten pleats on shoulders (folds are directed towards sides). Sew bodice fronts to front skirts, serge and press seams upwards.
4. Sew shoulder seams, serge and press towards back. Sew one-piece collar seam, press seam open. Sew collar into neckline, press seam towards collar.
5. Cut a bias tape of 2.5 cm wide and 50 cm long for button loops. Fold bias tape in half lengthwise right sides together and sew at 0.3 cm from fold. Grade seam, turn right side out and straighten. Cut into twelve pieces, make loops adjusting the length. Place loops on right front and sew.
6. Sew one-piece collar seam of front facings, press seam open. Serge outer edge. Place front facing and dress right sides together and sew on lapel and fall part between marks. Clip into seam near marks. Turn facing to wrong side, straighten and press. Sew center front seam together with center seam of front facing. Serge and press seam open. Clip seam in shoulder seam corner, turn seam allowance of collar under and topstitch into lower collar connecting seam. Attach shoulder seams of front facing to dress shoulder seams.
7. Sew right side seam and sleeve seam, serge and press seam towards back. Serge left side edges separately. Sew left side seam from lower sleeve edge to mark and from mark down to hem. Press seams open. Sew in zipper.
8. Sew cuff into ring, press seam open. Press cuff in half along center line right side out.. Sew cuff to lower edge of sleeve. Serge seam, turn cuff to right side and press.
9. Serge hem of dress, press under and topstitch.
10. Sew on buttons.

TECHNICAL DRAWING:

