

Recommendations on fabric: natural or mixed dress fabric.

You will also need: fusible interfacing, invisible zipper, 8 buttons.

Seam allowances: hem of dress - 2.0 cm, hem of sleeve - 1.2 cm, other seams - 1.0 cm

Note on seam allowances:

- If the pattern has double contour the seam allowances are included. They are 1 cm unless specified otherwise.
- If the pattern has single contour, the seam allowances are NOT included and need to be added when laying out the pattern.



Note on length of fabric:

Attention! The amount of fabric needed for your pattern is not included. It will depend on the selected pattern size, the width, and design of the fabric you plan to use. First, print all the paper patterns and lay them out at the width of fabric you plan to use (usually from 90 to 150 cm). Measure how much fabric you will need. Don't forget to account for pieces that need to be cut multiple times and pieces that are cut on the fold.

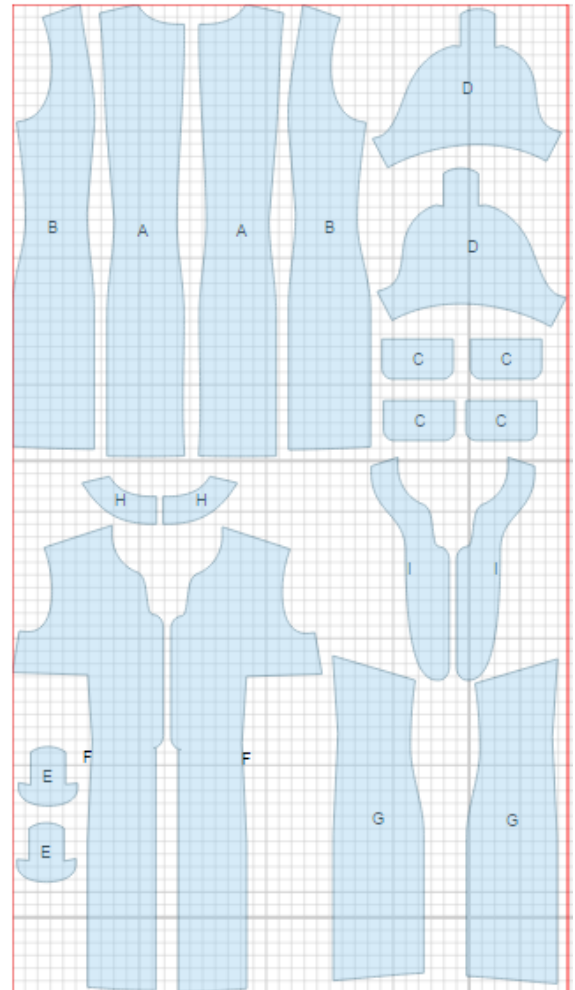
CUTTING:

Main fabric:

1. Center back – cut 2 (A)
2. Side back - cut 2 (B)
3. Center front - cut 2 (F)
4. Side front - cut 2 (G)
5. Sleeve - cut 2 (D)
6. Front facing - cut 2 (I)
7. Back neck facing - cut 2 (H)
8. Flap - cut 4 (C)
9. Sleeve facing - cut 2 (E)

Fusible interfacing:

1. Front facing - cut 2
2. Back neck facing - cut 2
3. Flap - cut 2



INSTRUCTIONS:

1. Apply fusible interfacing to listed pieces.
2. Sew side backs to backs, serge and press seam allowance toward center. Serge center back edges separately. Sew center back seam from mark down to hem. Press seam open pressing slit for zipper. Sew in zipper.
3. Sew side fronts to fronts, serge and press seam allowance toward center.
4. Place flaps right sides together and sew on three sides. Clip seam, turn right side out and press. Serge upper edge. Sew flaps to front.
5. Sew shoulder and side seams, serge and press towards back.
6. Sew shoulder seams of neck facings and front facings. Press open. Serge outer edge. Pin facing and garment right sides together and sew along neckline, and center front.. Finish stitch exactly at center seam line. Clip seam on curves, trim in corners, at slit section cut seams off to 0.1-0.2 cm. Turn right side out, straighten and press. Baste facing to shoulder seams and to zipper tape. Sew center front seam. Serge and press towards left side.
7. Sew sleeve seam. Serge and press. Serge lower edge of sleeve facing. Pin sleeve facing on sleeve right sides together and sew on one-piece shoulder strap. Start and finish stitch exactly at curve sewing line. Clip into seam, trim in corners, turn right side out and press. Trim sleeve seam allowances near mark, turn facing seam allowances under. Sew sleeve into armhole making a pleat and matching long notches. Turn strap through the opening to right side. Serge and press seams.
8. Serge hem of sleeve, turn under and topstitch. Serge hem of dress, turn under and slipstitch.
9. Make buttonholes and sew buttons on front. Sew buttons on shoulder straps and flaps.

TECHNICAL DRAWING:

