

Recommendations on fabric: natural or mixed fabric suitable for blouses, lace.

You will also need: invisible zipper.

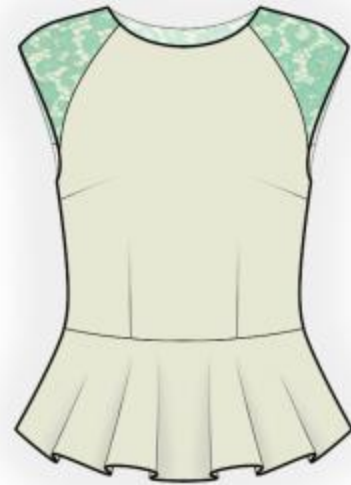
Seam allowances: on hem – 1.5 cm, other seams – 1.0 cm.

Note on seam allowances:

- If the pattern has double contour the seam allowances are included. They are 1 cm unless specified otherwise.
- If the pattern has single contour, the seam allowances are NOT included and need to be added when laying out the pattern.

Note on length of fabric:

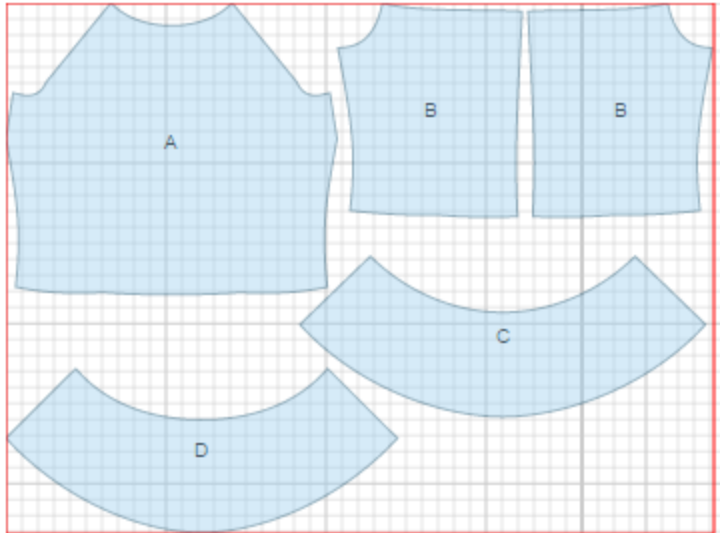
Attention! The amount of fabric needed for your pattern is not included. It will depend on the selected pattern size, the width, and design of the fabric you plan to use. First, print all the paper patterns and lay them out at the width of fabric you plan to use (usually from 90 to 150 cm). Measure how much fabric you will need. Don't forget to account for pieces that need to be cut multiple times and pieces that are cut on the fold.



CUTTING:

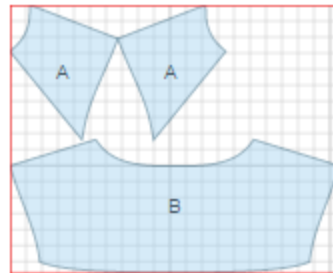
Main fabric:

1. Back – cut 2 (B)
2. Back peplum - cut 1 (C)
3. Front – cut 1 (A)
4. Front peplum- cut 1 (D)



Lace:

1. Back yoke - cut 1 (B)
2. Front yoke - cut 2 (A)



INSTRUCTIONS:

1. Sew waist darts on backs and press towards center. Sew center back seam. Serge and press seam towards left side. Sew back peplum to back. Serge and press seam upwards.
2. Sew waist darts on fronts and press towards center. Sew bust darts and press downwards. Sew front peplum to front. Serge and press seam upwards.
3. Sew shoulder seams of yokes. Serge and press seams towards back.
4. Serge armhole edge, press under and topstitch.
5. Sew yokes to front and back (armhole edge on front and back extends at 1 cm). Serge and press seam downwards.

6. Cut a bias tape of 4 cm wide. Length is equal to neckline + 4 cm. Fold bias tape in half lengthwise right side out and press. Place bias tape along neckline from right side and sew. Clip into curves.. Turn bias tape to the inside and topstitch along the fold onto blouse.
7. Sew right side seam. Serge and press seam towards back. Serge left side edges separately. Sew left side seam from armhole to upper mark and from lower mark down to hem. Install zipper between marks.
8. Cut a bias tape of 4 cm wide. Length is equal to armhole. Fold bias tape in half lengthwise right side out and press. Place bias tape along armhole from right side and sew. Clip into curves. Turn bias tape to the inside and topstitch along the fold onto blouse.
9. Serge lower edge, turn under, press and topstitch.

TECHNICAL DRAWING:

