

Recommendations on fabric: natural or mixed heavy-weight fabric suitable for blouses.

You will also need: invisible zipper.

Seam allowances: on hem – 1.2 cm, other seams – 1.0 cm.

Note on seam allowances:

- If the pattern has double contour the seam allowances are included. They are 1 cm unless specified otherwise.
- If the pattern has single contour, the seam allowances are NOT included and need to be added when laying out the pattern.

Note on length of fabric:

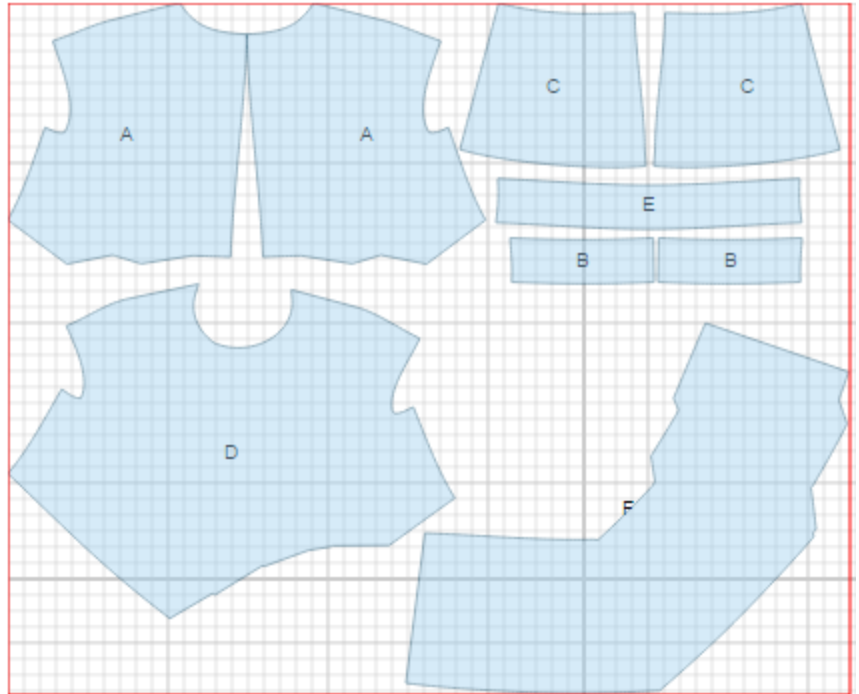
Attention! The amount of fabric needed for your pattern is not included. It will depend on the selected pattern size, the width, and design of the fabric you plan to use. First, print all the paper patterns and lay them out at the width of fabric you plan to use (usually from 90 to 150 cm). Measure how much fabric you will need. Don't forget to account for pieces that need to be cut multiple times and pieces that are cut on the fold.



CUTTING:

Main fabric:

1. Upper back – cut 2 (A)
2. Back insert - cut 2 (B)
3. Lower back - cut 2 (C)
4. Upper front - cut 1 (D)
5. Front insert – cut 1 (E)
6. Lower front - cut 1 (F)



INSTRUCTIONS:

1. Make and fasten pleats on upper backs, direct pleats towards side seams. Sew back inserts to upper backs. Serge and press seams towards inserts. Sew lower backs to inserts. Serge and press seams towards inserts.
2. Serge separately center back edges. Sew back center seam from zipper mark down to hem. Press seam open. Sew in zipper.
3. Make and fasten pleats on upper front (two pleats on right and three pleats on left). Pleats are directed to side seams. Make and fasten pleats on lower front, direct pleats towards side seams. Sew front insert to upper front. Serge and press seam towards insert. Sew front insert to lower front. Serge and press seam towards insert.
4. Sew shoulder seams. Serge and press seams towards back.
5. Cut a bias tape of 4 cm wide. Length is equal to armhole + 4 cm. Fold bias tape in half lengthwise right side out and press. Place bias tape along armhole from right side and sew. Turn bias tape to the inside and topstitch along the fold onto blouse.

6. Cut a bias tape of 4 cm wide. Length is equal to neckline + 4 cm. Fold bias tape in half lengthwise right side out and press. Place bias tape along neckline from right side and sew. Turn bias tape to the inside and topstitch along the fold onto blouse.

7. Sew side seams. Serge and press seams towards back.

8. Serge lower edge of the blouse, press seam allowance under, and topstitch.

TECHNICAL DRAWING:

