

Recommendations on fabric: natural or mixed fabric suitable for blouses.

You will also need: fusible interfacing, two buttons.

Seam allowances: on hem – 2.0 cm, other seams – 1 cm.

Note on seam allowances:

- If the pattern has double contour the seam allowances are included. They are 1 cm unless specified otherwise.
- If the pattern has single contour, the seam allowances are NOT included and need to be added when laying out the pattern.

Note on length of fabric:

Attention! The amount of fabric needed for your pattern is not included. It will depend on the selected pattern size, the width, and design of the fabric you plan to use. First, print all the paper patterns and lay them out at the width of fabric you plan to use (usually from 90 to 150 cm). Measure how much fabric you will need. Don't forget to account for pieces that need to be cut multiple times and pieces that are cut on the fold.



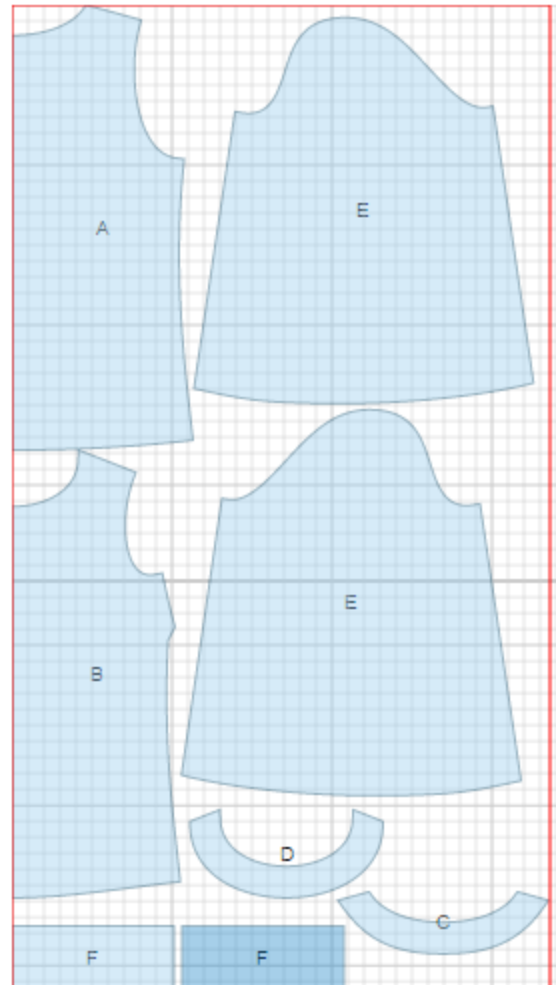
CUTTING:

Main fabric:

1. Back – cut 1 on fold (A)
2. Front – cut 1 on fold (B)
3. Sleeve – cut 2 (E)
4. Cuff – cut 2 (F)
5. Back neck facing – cut 1 (C)
6. Front neck facing – cut 1 (D)

Fusible interfacing:

1. Cuff - cut 2 (F)
2. Back neck facing - cut 1 (C)
3. Front neck facing - cut 1 (D)



INSTRUCTIONS:

1. Apply fusible interfacing to listed pieces.
2. Sew bust darts and press downwards.
3. Sew side and shoulder seams. Serge and press seams towards back.
4. Sew shoulder seams of neck facings. Press seams open. Serge outer edge of facing. Place facing on neckline right sides together and sew along neckline. Trim seam, turn facing to wrong side, straighten and press. Baste facing to shoulder seams.
5. Make a cut on sleeve according to marking. Cut a bias tape from main fabric of 4 cm wide. Length is equal to doubled cut length + 4 cm. Fold bias tape in half lengthwise and press. Press outer edges towards center. Finish the cut with bias tape.
6. Sew sleeve seam, press and serge. Make a gathering stitch along sleeve cap to adjust ease.
7. Fold cuff in half along center line, right sides together, and sew short sides stopping 1 cm from lower edge. Clip horizontally where stitching ends., Turn cuff out and press. Sew outer edge of cuff to sleeve. Turn inner edge under and topstitch into connecting seam.
8. Sew sleeve into armhole matching notches and adjusting ease. Serge and press seam.
9. Turn lower edge of blouse under twice at 1 cm and topstitch.
10. Make buttonholes on cuffs and sew buttons.



4543
Blouse



TECHNICAL DRAWING: