

Recommendations on fabric: natural or mixed light-weight suiting fabric.

You will also need: fusible interfacing, lining, decorative closure, shoulder pads, sleeve heads.
Seam allowances: hem of sleeve – 3.0 cm; other seams - 1 cm.

Note on seam allowances:

- If the pattern has double contour the seam allowances are included. They are 1 cm unless specified otherwise.
- If the pattern has single contour, the seam allowances are NOT included and need to be added when laying out the pattern.

Note on length of fabric:

Attention! The amount of fabric needed for your pattern is not included. It will depend on the selected pattern size, the width, and design of the fabric you plan to use. First, print all the paper patterns and lay them out at the width of fabric you plan to use (usually from 90 to 150 cm). Measure how much fabric you will need. Don't forget to account for pieces that need to be cut multiple times and pieces that are cut on the fold.



CUTTING:

Main fabric:

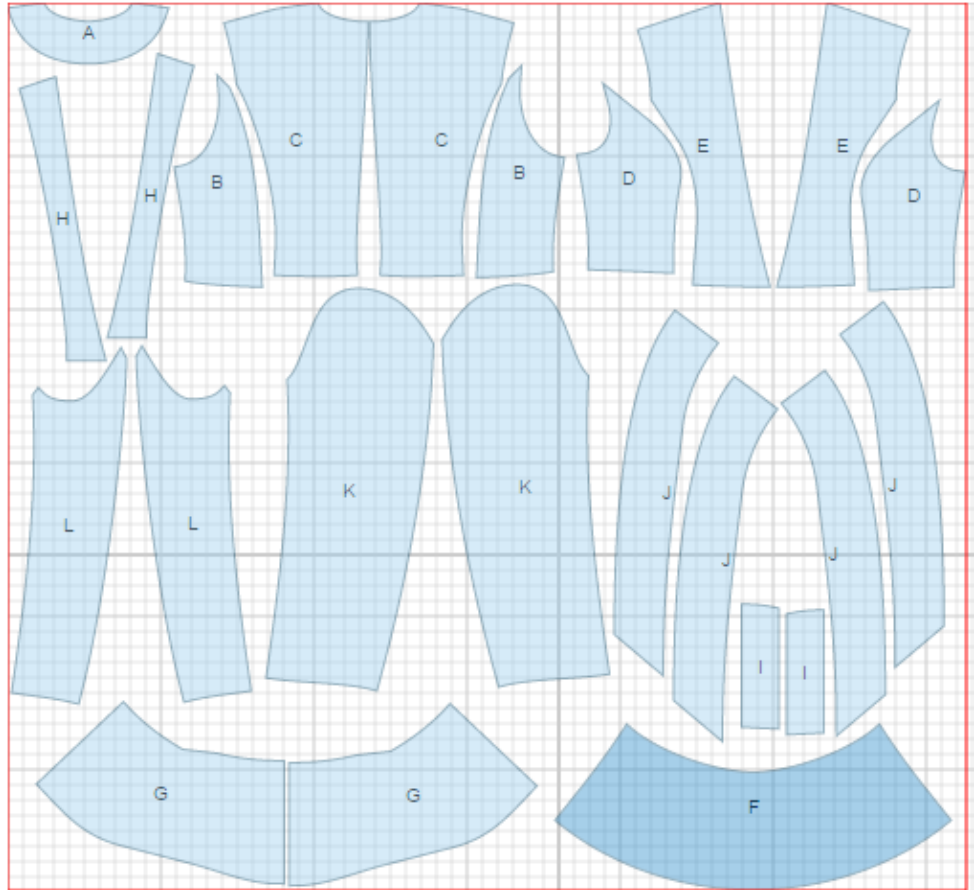
1. Center back – cut 2 (C)
2. Side back – cut 2 (B)
3. Center front – cut 2 (E)
4. Side front – cut 2 (D)
5. Back peplum - cut 1 (F)
6. Front peplum - cut 2 (G)
7. Collar - cut 4 (J)
8. Front facing - cut 2 (H+I)
9. Back neck facing - cut 1 (A)
10. Upper sleeve - cut 2 (K)
11. Lower sleeve - cut 2 (L)

Lining:

1. Center back – cut 2 (C)
2. Side back – cut 2 (B)
3. Center front - cut 2 (E)
4. Side front – cut 2 (D)
5. Upper sleeve - cut 2 (K)
6. Lower sleeve – cut 2 (L)
7. Back peplum - cut 1 (F)
8. Front peplum - cut 2 (G)

Fusible interfacing:

1. Center front - cut 2 (E)
2. Collar - cut 2 (J)
3. Front facing - cut 2 (H+I)
4. Back neck facing - cut 1 (A)



INSTRUCTIONS:

1. Apply fusible interfacing to listed pieces as well as hems.
2. Sew darts on backs and press towards center. Sew center backs to side backs. Press seams towards center. Sew center back seam. Press seam open. Sew back peplum to back.
3. Sew center fronts to side fronts. Press seams open. Make and fasten a pleat on both front peplums. Sew front peplums to front pieces.
4. Sew and press open side and shoulder seams.
5. Place collars pairwise right sides together and sew center back seams. Press seams open. Pin collar pieces right sides together and sew outer seam. Trim seam allowances in corners, clip into curves. Turn collar out, straighten and press. Sew collar into neckline and front facing neckline.
6. Sew and press open elbow seam of sleeve. Sew and press open front sleeve seam. Press lower edge of sleeve seam allowance under.
7. Make a gathering stitch along sleeve cap to adjust ease. Sew in sleeves matching notches, easing in on curves. Sew in sleeve heads and shoulder pads.
8. Sew shoulder seams of front facings and neck facings. Press seams open. Sew and press open side seams of peplums. Sew lining in the same way the jacket is sewn, leaving an opening in front right seam of sleeve. Sew lining to front facings and to neck facing. Sew lining to lower edge of peplum.
9. Sew decorative closure into peplum and front connecting seam.
10. Place front facing onto jacket right sides together, pin and sew along front band, neckline and hem. Trim seam in corners, clip on curves. Turn jacket right side out, straighten and press.
11. Sew lining to hem of sleeves. Make a fastening stitch under collar topstitching main garment onto lining. Fasten lining to jacket on peplum connecting line. Sew the opening in sleeve closed.

TECHNICAL DRAWING:

