

Recommendations on fabric: natural or mixed dress fabric with lycra.

You will also need: invisible zipper, fusible interfacing.

Seam allowances: hem of dress – 2.0 cm, other seams – 1 cm.

Note on seam allowances:

- If the pattern has double contour the seam allowances are included. They are 1 cm unless specified otherwise.

- If the pattern has single contour, the seam allowances are NOT included and need to be added when laying out the pattern.

Note on length of fabric:

Attention! The amount of fabric needed for your pattern is not included. It will depend on the selected pattern size, the width, and design of the fabric you plan to use. First, print all the paper patterns and lay them out at the width of fabric you plan to use (usually from 90 to 150 cm). Measure how much fabric you will need. Don't forget to account for pieces that need to be cut multiple times and pieces that are cut on the fold.



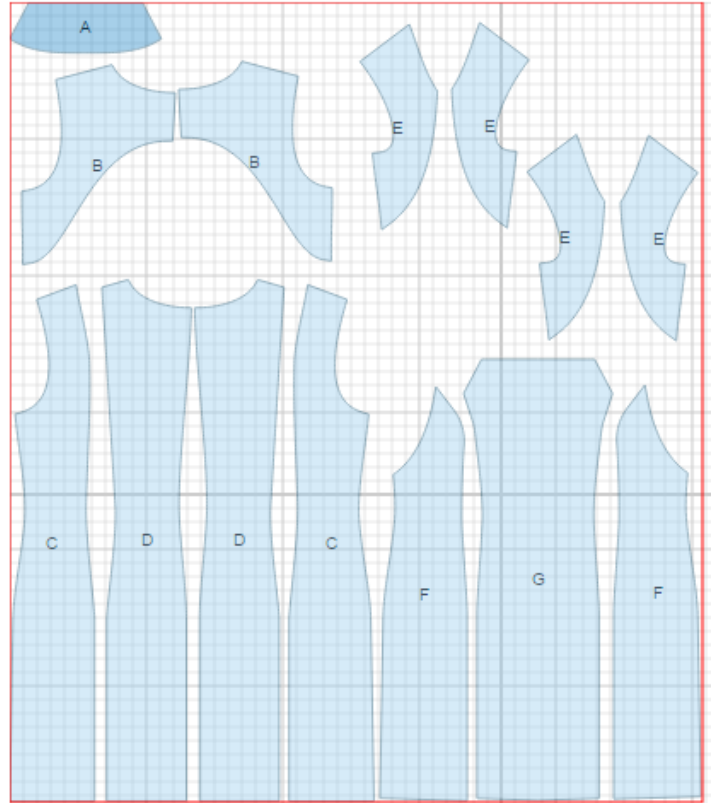
CUTTING:

Main fabric:

1. Center back – cut 2 (D)
2. Side back - cut 2 (C)
3. Center front - cut 1 (G)
4. Side front - cut 2 (F)
5. Front yoke - cut 4 (E)
6. Front neck facing - cut 1 (A)
7. Back neck facing - cut 2 (B)

Fusible interfacing:

1. Front neck facing - cut 1 (A)
2. Back neck facing - cut 2 (B)
3. Front yoke - cut 2 (E)



INSTRUCTIONS:

1. Apply fusible interfacing to listed pieces.
2. Sew side backs to center backs. Serge and press seams towards center.
3. Serge separately center back edges. Sew center back seam from zipper mark down to hem. Press seam open, pressing the slit. Sew in zipper.
4. Serge outer edge of front neck facing. Place facing onto center front and sew on neckline, turn facing to wrong side and topstitch at 0.5 cm from the edge.
5. Sew side fronts to center piece. Serge and press seams towards center. Sew yoke to front. Serge and press seam toward yoke.
6. Sew shoulder and side seams, serge and press toward back.
7. Sew shoulder seams of facings and yokes. Serge and press seams towards back. Serge lower edges. Place inner and outer yokes right sides together and sew neckline and corner. Turn inner yokes to wrong side and press neckline. Sew armhole in two steps: first front armhole, then back armhole. Stitch lower edges of inner yokes into outer yokes connecting seams. Baste yoke to back seams.
8. Serge lower edge of the dress, turn under hem allowance, press and topstitch.

TECHNICAL DRAWING:

