

Recommendations on fabric: natural or mixed dress fabric.

You will also need: 12 buttons, fusible interfacing.

Seam allowances: hem of dress – 2.0 cm, other seams – 1 cm.

**Note on seam allowances:**

- If the pattern has double contour the seam allowances are included. They are 1 cm unless specified otherwise.
- If the pattern has single contour, the seam allowances are NOT included and need to be added when laying out the pattern.

**Note on length of fabric:**

*Attention! The amount of fabric needed for your pattern is not included. It will depend on the selected pattern size, the width, and design of the fabric you plan to use. First, print all the paper patterns and lay them out at the width of fabric you plan to use (usually from 90 to 150 cm). Measure how much fabric you will need. Don't forget to account for pieces that need to be cut multiple times and pieces that are cut on the fold.*



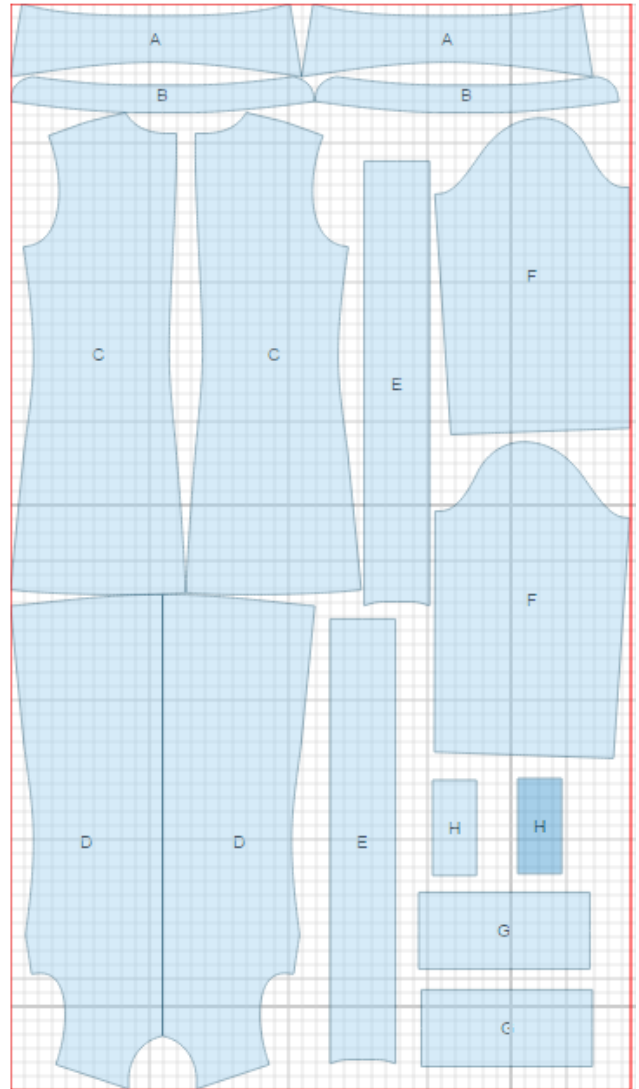
### CUTTING:

#### Main fabric:

1. Back – cut 2 (C)
2. Front – cut 2 (D)
3. Placket – cut 2 (E)
4. Sleeve – cut 2 (F)
5. Collar – cut 2 (A)
6. Collar stand – cut 2 (B)
7. Cuff – cut 2 (G)
8. Sleeve strap – cut 2 (H)

#### Fusible interfacing:

1. Collar – cut 1
2. Collar stand – cut 1
3. Placket – cut 2
4. Cuff – cut 2



## INSTRUCTIONS:

1. Apply fusible interfacing to listed pieces.
2. Sew darts on back, press towards center. Sew center back seam. Serge and press seam to left side.
3. Sew darts on front. Press bulk downwards.
4. Sew outer side of placket to front. Press seam onto placket and press. Turn under inner edge of placket at 1 cm, press placket to wrong side and topstitch into outer placket connecting seam.
5. Sew shoulder and side seams, serge and press toward back.
6. Place upper and lower collars right sides together. Stitch outer seam. Clip into seam. Turn collar out, straighten and press. Place collar stand pieces right sides together, insert ready collar between them, match notches and sew including ends of collar stand. Start and end stitch exactly at marked line of collar stand connecting seam. Turn ready collar out, straighten and press.
7. Sew outer collar stand into neckline, turn under open edge of inner stand and topstitch into connecting seam.
8. Fold sleeve strap in half right sides together and stitch on long and one short side. Turn strap out, serge and press short edge. Make a buttonhole. Topstitch strap from the wrong side according to marking. Sew button on right side.
9. Serge separately sleeve edges. Sew sleeve seam from from slit mark upwards. Press seam open. Topstitch seam along the slit at 0.2 cm from the edge. Make a gathering stitch along sleeve cap for adjusting ease. Sew sleeves into armholes matching notches and adjusting ease, serge and press seams.
10. Fold cuff in half and sew short edges and corner. Start and end stitch exactly at marking of cuff connection. Turn cuff out and press. Make pleats on sleeve according to marking. Sew outer cuff to sleeve. Turn under seam allowance of inner cuff and topstitch into connecting seam. Make buttonholes on cuffs and sew buttons.
11. Serge lower edge of the dress, turn under hem allowance, press and topstitch.
12. Make buttonholes on right front, sew buttons on left front.

TECHNICAL DRAWING:

