

Recommendations on fabric: natural or mixed dress fabric with lycra; contrast fabric for trimming.

You will also need: fusible interfacing, invisible zipper.

Seam allowances: hem of sleeve – 2.0 cm; other seams - 1 cm.

Note on seam allowances:

- If the pattern has double contour the seam allowances are included. They are 1 cm unless specified otherwise.

- If the pattern has single contour, the seam allowances are NOT included and need to be added when laying out the pattern.

Note on length of fabric:

Attention! The amount of fabric needed for your pattern is not included. It will depend on the selected pattern size, the width, and design of the fabric you plan to use. First, print all the paper patterns and lay them out at the width of fabric you plan to use (usually from 90 to 150 cm). Measure how much fabric you will need. Don't forget to account for pieces that need to be cut multiple times and pieces that are cut on the fold.



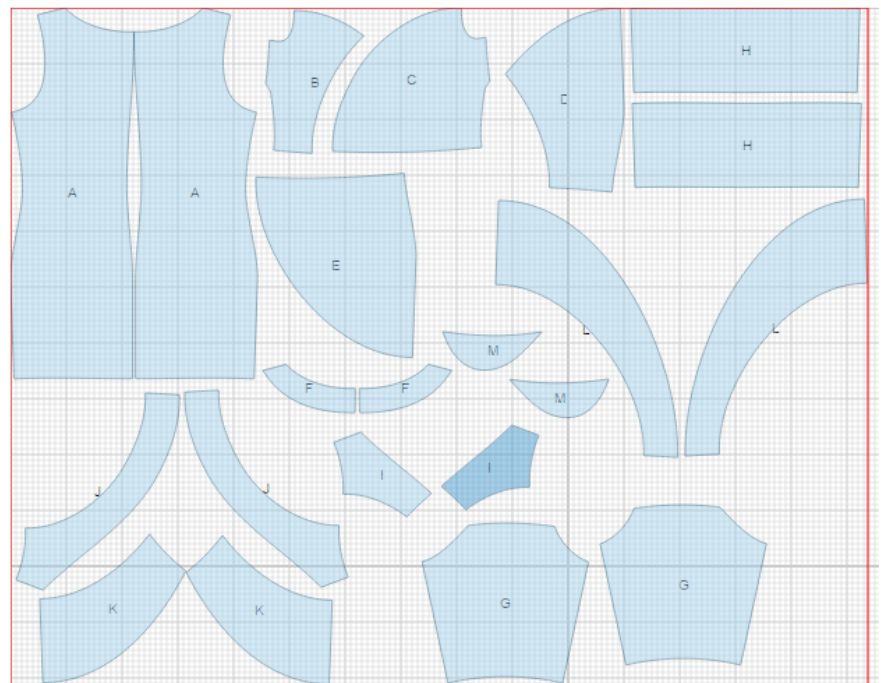
CUTTING:

Main fabric:

1. Back – cut 2 (A)
2. Left upper front – cut 1 (B)
3. Right upper front – cut 1 (C)
4. Left lower front – cut 1 (D)
5. Right lower front - cut 1 (E)
6. Lower sleeve – cut 2 (G)
7. Back neck facing – cut 2 (F)

Trimming:

1. Lower back trimming - cut 2 (H)
2. Left upper front trimming - cut 2 (I)
3. Right upper front trimming - cut 2 (J)



4. Left lower front trimming - cut 2 (K)
5. Right lower front trimming - cut 2 (L)
6. Upper sleeve - cut 2 (M)

Fusible interfacing:

1. Back neck facing – cut 2
2. Left upper front trimming - cut 1
3. Right upper front trimming - cut 1

INSTRUCTIONS:

1. Apply fusible interfacing to listed pieces.
2. Sew darts on back and front. Press waist darts towards center, bust darts - downwards.
3. Serge center back edges separately. Sew center back seam from zipper mark down to hem. Press seam open. Install zipper.
4. Place left upper front trimming pieces right sides together and stitch on neck edge. Clip seam on curves, turn right side out and press. Sew left trimming to left upper front. Serge seam and press onto front.
5. Place right upper front trimming pieces right sides together, insert left upper front and sew on neck edge. Clip seam on curves, turn right side out and press. Sew right trimming to right upper front. Serge seam and press onto front.
6. Place left lower trimming pieces right sides together and sew lower edge. Clip seam on curves, turn right side out and press. Sew left trimming to left lower front, serge seam and press onto front.
7. Place right lower trimming pieces right sides together and sew lower edge. Clip seam on curves, turn right side out and press.
8. Place left and right lower fronts right sides together, insert right trimming between them and sew. Serge seam and press it onto front.
9. Sew upper and lower fronts, serge seam and press it upwards.
10. Place back trimming pieces right sides together and sew lower edge. Turn right side out and press. Serge outer edge of inner trimming part. Sew outer trimming to back, press seam onto trimming.

-
11. Serge outer edges of back neck facings. Place facings onto dress and sew neckline. Press seam.
 12. Sew shoulder seams including facing, press seam onto back and serge. Turn right side out, straighten and press. Baste allowances of center seam to zipper tape.
 13. Sew side seams, along with inner back trimming. Serge and press seams toward back. Turn right side out, straighten and press. Topstitch inner trimming into outer trimming connecting seam.
 14. Sew upper and lower sleeves, press seam upwards and serge. Sew sleeve seam, press and serge seam allowances. Sew sleeves into armholes matching notches. Press and serge seam allowances. Serge hem of sleeve, turn under, press and topstitch.

TECHNICAL DRAWING:

