

Recommendations on fabric: natural or mixed suiting fabric.

You will also need: fusible interfacing, 2 buttons.

Seam allowances: on hems – 2.0 cm, other seams – 1 cm.

Note on seam allowances:

- If the pattern has double contour the seam allowances are included. They are 1 cm unless specified otherwise.
- If the pattern has single contour, the seam allowances are NOT included and need to be added when laying out the pattern.

Note on length of fabric:

Attention! The amount of fabric needed for your pattern is not included. It will depend on the selected pattern size, the width, and design of the fabric you plan to use. First, print all the paper patterns and lay them out at the width of fabric you plan to use (usually from 90 to 150 cm). Measure how much fabric you will need. Don't forget to account for pieces that need to be cut multiple times and pieces that are cut on the fold.



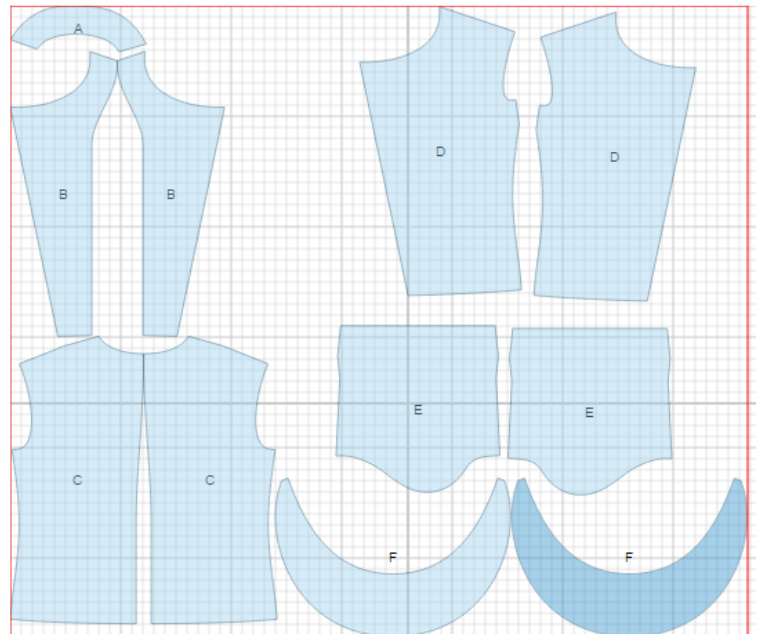
CUTTING:

Main fabric:

1. Back – cut 2 (C)
2. Front – cut 2 (D)
3. Sleeve – cut 2 (E)
4. Collar – cut 2 (F)
5. Front facing (front band on pattern) – cut 2 (D)
6. Back neck facing – cut 1 (A)

Fusible interfacing:

1. Collar – cut 2
2. Front facing – cut 2
3. Back neck facing – cut 1



INSTRUCTIONS:

1. Apply fusible interfacing to listed pieces.
2. Sew darts on backs, press towards center. Sew center back seam. Serge seam and press it to left side.
3. Sew darts on fronts. Press downwards.
4. Sew shoulder seams. Serge and press towards back.
5. Make a gathering stitch along sleeve cap for adjusting ease. Sew sleeves into open armholes adjusting ease. Serge seams. Sew side seam and sleeve seam together with one continuous stitch. Serge seams and press towards back. Serge hem of sleeve. Turn hem under and match with upper mark, and sew. Turn cuff to right side.
6. Sew shoulder seams of back neck facing and front facings. Press seams open. Serge outer edge.
7. Place collar pieces right sides together, pin and sew on outer edge. Clip into curves, turn collar right side out, straighten and press.
7. Baste collar to neckline. Place neck/front facing onto front and neck edge, right sides together, pin and sew along front edges and neckline (collar is sandwiched between facing and garment). Trim seam in corners and understitch. Turn front bands under, straighten, and press.
8. Serge hem of jacket, fold to wrong side, press, and topstitch.
9. Make buttonholes and sew buttons.

TECHNICAL DRAWING:

