

Recommendations on fabric: natural or mixed fabric suitable for blouses.

You will also need: fusible interfacing, 6 buttons, piping or bias trim (length is shown on front pattern piece), decorative closure.

Seam allowances: on hem – 2.0 cm, hem of sleeve – 1.2 cm, other seams – 1.0 cm.

Note on seam allowances:

- If the pattern has double contour the seam allowances are included. They are 1 cm unless specified otherwise.
- If the pattern has single contour, the seam allowances are NOT included and need to be added when laying out the pattern.

Note on length of fabric:

Attention! The amount of fabric needed for your pattern is not included. It will depend on the selected pattern size, the width, and design of the fabric you plan to use. First, print all the paper patterns and lay them out at the width of fabric you plan to use (usually from 90 to 150 cm). Measure how much fabric you will need. Don't forget to account for pieces that need to be cut multiple times and pieces that are cut on the fold.



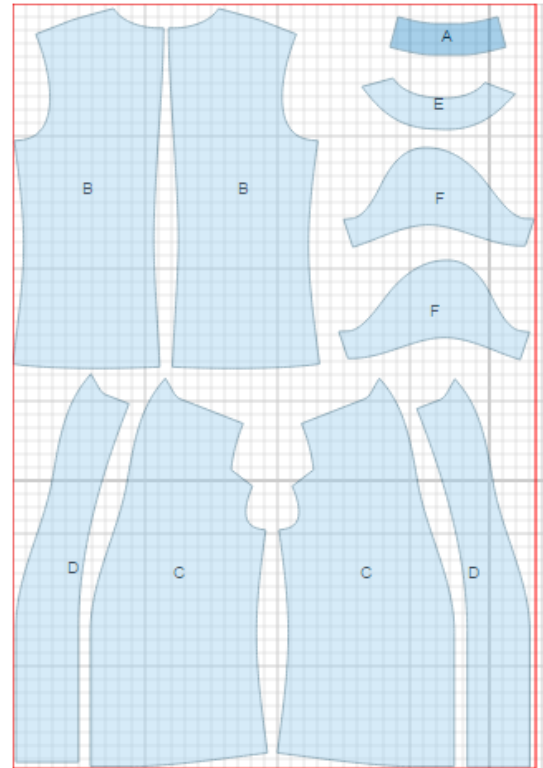
CUTTING:

Main fabric:

1. Back – cut 2 (B)
2. Front – cut 2 (C)
3. Sleeve – cut 2 (F)
4. Collar stand – cut 2 (A)
5. Front facing – cut 2 (D)
6. Back neck facing – cut 1 (E)

Fusible interfacing:

1. Collar stand – cut 1 (A)
2. Front facing – cut 2 (D)
3. Back neck facing – cut 1 (E)



INSTRUCTIONS:

1. Apply fusible interfacing to listed pieces.
2. Mark and sew bust, waist and shoulder darts on front and back. Press bust darts downwards, waist and shoulder darts – toward center.
3. Sew center back seam. Serge and press seam towards left.
4. Sew outer collar stand into back neck. Clip into seam and press toward collar stand.
5. Sew side seams. Sew shoulder seams and collar stand seams. Serge and press seams toward back.
6. Sew inner collar stand into neck of facing, press seam open. Sew and press open shoulder seams of back neck facing and front facing. Serge outer edge.
7. Cut a bias tape of 2.5 cm wide and 20 cm long. Fold bias tape in half lengthwise right side together and stitch at 0.3 cm from the fold. Trim seam allowance off close to stitch, turn tape out and straighten. Cut 5 loops of approximately 4 cm long each.

8. Place front facing onto front right sides together, pin and stitch along front band and collar stand edge inserting piping or bias trim (if desired) and loops according to marks. Clip seams in corners. Turn front bands and collar stand out and straighten seams.

9. Sew and serge sleeve seams. Serge hem of sleeve, press to wrong side and topstitch. . Make a gathering stitch on the sleeve cap for adjusting ease. Sew sleeve into armhole matching notches and adjusting ease. Serge and press.

10. Press hem of the blouse to wrong side twice at 1 cm and topstitch.

11. Topstitch decorative closure. Sew on buttons. Make a buttonhole on inner front. Sew on button accordingly.

TECHNICAL DRAWING:

