

Recommendations on fabric: natural or mixed fabric suitable for dresses, lace or guipure.

You will also need: invisible zipper, fusible interfacing.

Seam allowances: hem of dress – 2.5 cm, hem of sleeve – 1.5 cm, along vent – 6 cm, other seams – 1 cm.

Note on seam allowances:

- If the pattern has double contour the seam allowances are included. They are 1 cm unless specified otherwise.
- If the pattern has single contour, the seam allowances are NOT included and need to be added when laying out the pattern.

Note on length of fabric:

Attention! The amount of fabric needed for your pattern is not included. It will depend on the selected pattern size, the width, and design of the fabric you plan to use. First, print all the paper patterns and lay them out at the width of fabric you plan to use (usually from 90 to 150 cm). Measure how much fabric you will need. Don't forget to account for pieces that need to be cut multiple times and pieces that are cut on the fold.



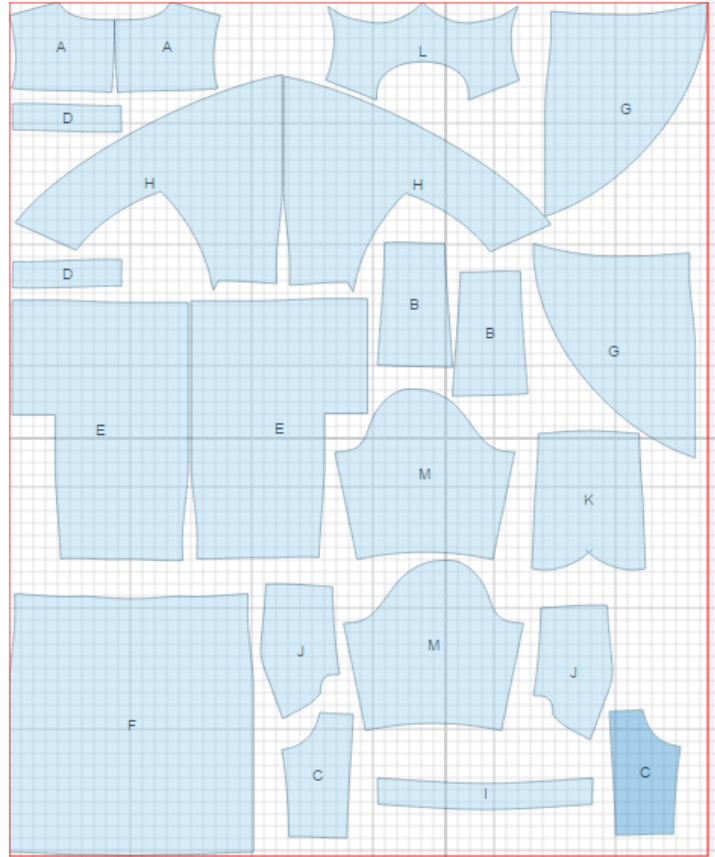
CUTTING:

Main fabric:

1. Center back – cut 2 (B)
2. Side back – cut 2 (C)
3. Back waistband – cut 2 (D)
4. Lower back – cut 2 (E)
5. Lower front – cut 1 (F)
6. Front waistband – cut 1 (I)
7. Side front – cut 2 (J)
8. Center front – cut 1 (K)
9. Right overlay piece – cut 2 (G)
10. Left overlay piece – cut 2 (H)

Lace or guipure:

1. Back yoke – cut 2 (A)
2. Front yoke – cut 1 (L)
3. Sleeve – cut 2 (M)



INSTRUCTIONS:

1. Sew darts on lower front and backs. Press darts toward center.
2. Sew center front to side fronts and center backs to side backs, serge seams and press toward center.
3. Sew back yoke to back, serge and press seam onto yoke. Sew back waistband to upper back, serge and press seam onto waistband. Sew lower back to back waistband, serge and press seam toward waistband.

-
4. On left lower back, along vertical vent edge, cut off 5 cm. Apply fusible interfacing to wrong side of the vent on both backs. On right side mark center seam line (vent fold-line). Press left part along vent fold line. On right part press to wrong side only allowance of right side of vent (6 cm). Match center seam and fasten on upper edge of vent. Serge back center seam separately on each side of back.. Serge vent seams. Sew center back seam from mark to vent corner. Trim corner of vent seam on right part. Press apart center seam, serge, press vent seams and fasten them on right side with machine stitch. Sew in zipper from upper edge down to notch.
 5. Sew front yoke to front, serge and press seam toward yoke Sew front waistband to upper front, serge and press seam toward waistband.
 6. Stitch left overlay pieces on lower edge. Clip into seams, turn right side out, straighten and press. Fold along marked line and fasten on edges.
 7. Place right overlay pieces right sides together, insert left overlay piece between details and stitch outer edge. Clip into seams, turn right side out, straighten and press.
 8. Place overlay piece onto lower back and pin on side and upper edges. Sew lower front to front waistband, serge and press seam toward waistband.
 9. Sew shoulder and side seams, serge and press seams toward back.
 10. Cut a bias tape from lace, width is 4 cm, length is equal to neckline + 2 cm. Fold bias tape in half lengthwise right side out and press. Place bias tape onto neck from right side, leaving tails, and stitch. Turn bias tape to wrong side, clip into curves, and topstitch along the fold on the front side of garment., turning inside extra bias tape at center seam. Press neck.
 11. Serge sleeve seams, serge and press seams. Make a gathering stitch along sleeve cap for adjusting ease. Sew sleeves into armholes matching marks and adjusting ease. Serge and press seams.
 12. Serge hem of the dress and hem of sleeves, press to wrong side and topstitch.

TECHNICAL DRAWING:

