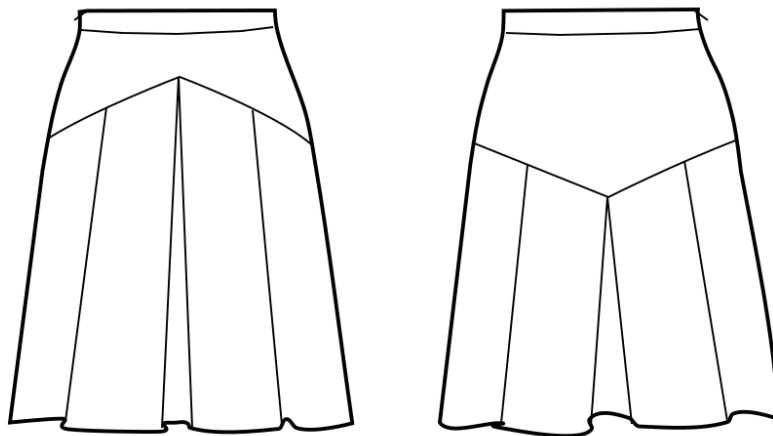


## PATTERN OVERVIEW

### Made-to-measure pattern:

The pattern is drafted by our proprietary software specifically for your measurements that you supply when making an online order. We strongly recommend that you request a free preview to check the style lines and the amount of fabric needed before ordering the paid version.



### Pattern features:

Pleated skirt with straight waistband, front/back yoke, zipper in side left seam. The skirt sits at natural waistline, the length is at center of kneecap, ease around waist is approx. 1", ease around hips approx. 1.5" depending on the size.

**Recommendations on fabric:** wool or semi-wool, dress fabric, suiting fabric, bottom weight woven fabric.

**You will also need:** fusible interfacing, 1 zipper (the length in cm and inches is mentioned on the pattern piece).

### Seam allowances:

If the pattern has double contour the seam allowances are included and are as follows: 5/8 inch on all edges. hem of skirt – 1.5 inch.

Attention! Seam allowances are NOT included by default and need to be added when laying out and cutting details if your pattern has single contour.

### Fabric requirements:

To estimate fabric requirements, get a free preview for the pattern in your size at [www.Lekala.net](http://www.Lekala.net) and use [Online Fabric Estimator](#). Alternatively you may print all the paper patterns and lay them out at the width of fabric you plan to use (usually 44 inches to 60 inches) to see how much fabric you will need. Don't forget to count pair parts and symmetrical parts.

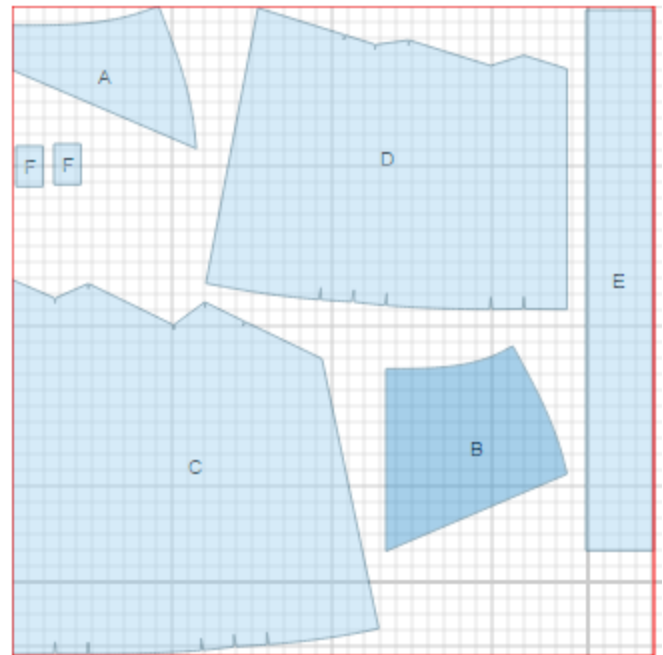
When sewing the garment, pay attention to notches, they must match up.

## CUTTING:

Lay pattern pieces out using the straight of grain line. Some pieces may be cut on the fold. This is noted on the pattern piece. Mark all notches and other design features such as darts, pleats etc. from the pattern onto your fabric.

### Main fabric:

1. Front yoke - cut 1 on fold ( A )
2. Back yoke - cut 1 on fold ( B )
3. Lower front - cut 1 on fold ( C )
4. Lower back - cut 1 on fold( D )
5. Waistband - cut 1 ( E )
6. Belt loop - F (optional)



### Fusible interfacing:

1. Waistband - cut 1 (E)

\* The capital letters in brackets correspond to pattern blocks as seen in Online Fabric Estimator.

## INSTRUCTIONS:

1. Make and press pleats on lower back according to marking and fasten them on upper edge with machine stitch. Sew back yoke to lower back. Serge seam and press it upwards.
2. Make and press pleats on lower front according to marking and fasten them on upper edge with machine stitch. Sew front yoke to lower front, snip seam allowance in corner. Serge seam and press it upwards.
3. Sew right side seam. Serge and press seam towards back.
4. Sew left side seam from zipper notch to bottom. Press seam open, including opening for zipper.
5. Sew in a lapped zipper according to zipper instructions that come with the packet.
6. Fold loops right side inwards and sew long edge, turn out and press. Baste loops to upper edge of skirt.
7. Apply fusible interfacing to waistband.
8. Sew waistband to waistline edge, right sides together, matching notches. The side back left seam allowance should line up with the lapped zipper and the front right side should extend enough so that the waistband can overlap. Press the seam allowance of the unstitched long edge under. Turn loops upwards, turn ends under and sew to waistband.
9. Serge lower edge of skirt, turn under, press, and slipstitch.
10. Make buttonhole on left side of waistband and sew button on right.

*If you have any further questions regarding the pattern,  
please don't hesitate to contact us at [info@sewist.com](mailto:info@sewist.com).  
We are always happy to help!*