

Recommendations on fabric: natural or mixed dress fabric; chiffon.

You will also need: 2 buttons, fusible interfacing, invisible zipper.

Seam allowances: hem of dress – 3 cm, along vent edge – 6 cm, other seams – 1 cm.

**Note on seam allowances:**

- If the pattern has double contour the seam allowances are included. They are 1 cm unless specified otherwise.
- If the pattern has single contour, the seam allowances are NOT included and need to be added when laying out the pattern.

**Note on length of fabric:**

*Attention! The amount of fabric needed for your pattern is not included. It will depend on the selected pattern size, the width, and design of the fabric you plan to use. First, print all the paper patterns and lay them out at the width of fabric you plan to use (usually from 90 to 150 cm). Measure how much fabric you will need. Don't forget to account for pieces that need to be cut multiple times and pieces that are cut on the fold.*



## CUTTING:

### Main fabric:

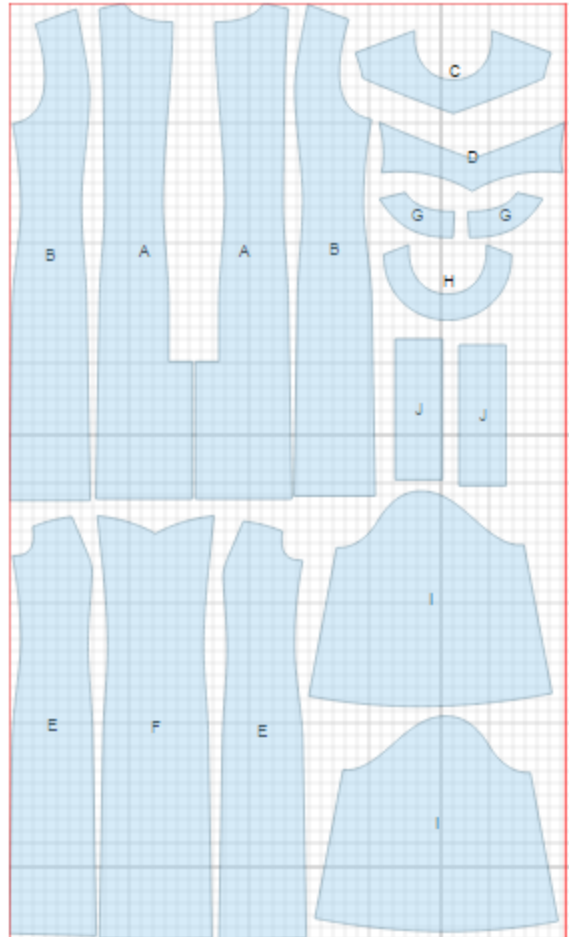
1. Center back – cut 2 (A)
2. Side back – cut 2 (B)
3. Side front – cut 2 (E)
4. Center front – cut 1 (F)
5. Front yoke\_1 – cut 1 (C)
6. Cuff – cut 2 (J)
7. Back neck facing – cut 2 (G)
8. Front neck facing – cut 1 (H)

### Chiffon:

1. Front yoke\_2 – cut 1 (D)
2. Sleeve – cut 2 (I)

### Fusible interfacing:

1. Cuff – cut 2 (J)
2. Back neck facing – cut 2 (G)
3. Front neck facing – cut 1 (H)



## INSTRUCTIONS:

1. Apply fusible interfacing to listed pieces.
2. Sew side backs to center backs, serge and press seams toward center
3. On left lower part of back, along vertical vent edge, cut off 5 cm. Apply fusible interfacing to wrong side of the vent on both backs. On right side mark center seam line (vent fold-line). Press left part along vent fold line. On right part press to wrong side only allowance of right side of vent (6 cm). Match details on center seam and fasten on upper edge of vent. Serge back center seam separately on each center back. Serge vent allowances. Sew center back seam from mark to vent corner. Trim corner of vent seam allowance on right part. Press center seam open, serge, press vent allowances, and fasten them on right side with machine stitch. Sew in zipper.
4. Sew side fronts to center fronts, serge and press seams toward center.
5. Sew front yoke 1 to front yoke 2. Serge and press seam upward. Sew front yoke 2 to front, serge and press seam downward.
6. Sew shoulder and side seams. Serge and press seams toward back.
7. Sew shoulder seams of facings, press seams open. Serge outer edge. Place dress and facing right sides together, matching neck edges. At 5 mm from zipper edge turn facing back and pin to upper edge of the dress. Turn seams along zipper onto right side of the dress, and pin to neck edge on top of facing. Stitch neck edge. Clip into curves. Turn right side out, straighten, and press. Baste facing to zipper tape.
8. Serge separately sleeve edges. Sew sleeve seam from slit mark upward. Press seam and the slit. Make fastening stitch along the slit at 0.2 cm from the edge. Sew in sleeves, matching notches. Serge and press seams. Make gathering stitch on lower edge of sleeve and gather fullness.
9. Fold sleeve cuff in half lengthwise, right side together, and short sides and long side to mark.. Clip into seam near the mark. Turn right side out and press. Sew outer edge of sleeve to sleeve. Turn inside the edge of inner side and topstitch into outer side connecting seam. Make buttonholes and sew on buttons.
11. Serge lower edge of the dress, press under, and slipstitch.

TECHNICAL DRAWING:

