

Recommendations on fabric: natural or mixed fabric suitable for blouses.

You will also need: 2 buttons, lining, fusible interfacing.

Seam allowances: all seams – 1 cm.

Note on seam allowances:

- If the pattern has double contour the seam allowances are included. They are 1 cm unless specified otherwise.
- If the pattern has single contour, the seam allowances are NOT included and need to be added when laying out the pattern.

Note on length of fabric:

Attention! The amount of fabric needed for your pattern is not included. It will depend on the selected pattern size, the width, and design of the fabric you plan to use. First, print all the paper patterns and lay them out at the width of fabric you plan to use (usually from 90 to 150 cm). Measure how much fabric you will need. Don't forget to account for pieces that need to be cut multiple times and pieces that are cut on the fold.



CUTTING:

Main fabric:

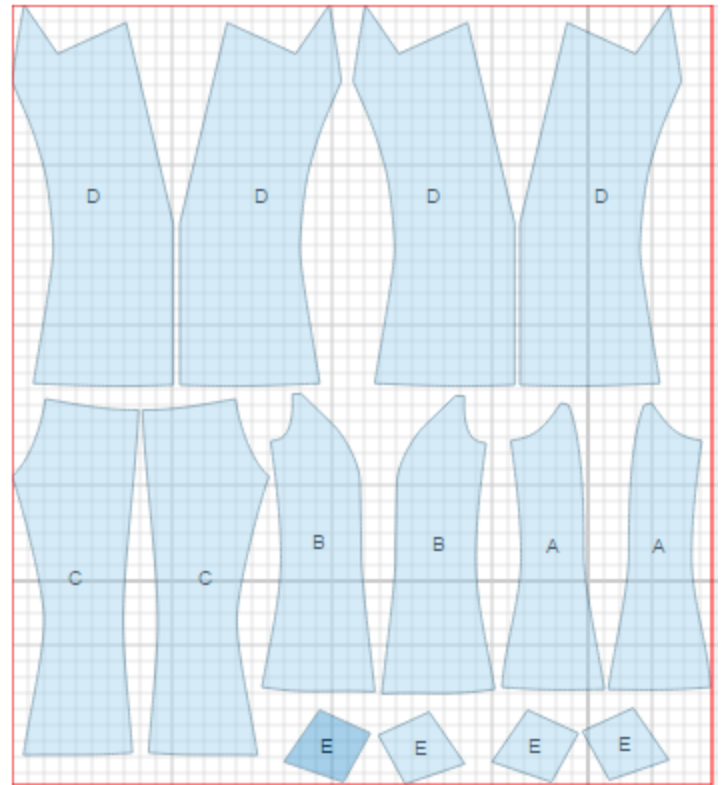
1. Center front – cut 4 (D)
2. Side front - cut 2 (B)
3. Side back – cut 2 (A)
4. Center back – cut 2 (C)
5. Collar – cut 4 (E)

Lining:

1. Center back – cut 2 (C)
2. Side back – cut 2 (A)
3. Side front – cut 2 (B)

Fusible interfacing:

1. Center front – cut 2 (D)
2. Collar – cut 4 (E)



INSTRUCTIONS:

1. Apply fusible interfacing to listed pieces.
2. Sew side backs to center backs. Serge and press seams towards center. Serge center back edges separately. Sew center back seam. Press seam open.
3. Sew side fronts to center fronts. Serge and press seams toward center. Serge side edges separately. Sew side seams and press seams open.. Sew collar outer collars to fronts. Press seam open.
4. Cut a strap of 6 cm wide. Fold in half lengthwise and press. Fold outer edges to center and press again. Sew fold edges along strap at 0.2 cm from the edge.
5. Sew lining pieces the same way as main fabric pieces, leaving an opening in left side seam. Sew inner collars to inner fronts.

6. Place main fabric and lining right sides together and stitch on contour, inserting straps. Turn blouse right side out through the opening. Sew the opening closed.

7. Serge buttonholes on fronts and sew on buttons.

TECHNICAL DRAWING:

