

## PATTERN OVERVIEW

### Made-to-measure pattern:

The pattern is drafted by our proprietary software specifically for your measurements that you supply when making an online order. We strongly recommend that you request a free preview to check the style lines and the amount of fabric needed before ordering the paid version.

### Pattern features:

Pencil midi skirt with buttoned yoke and flounce, zipper in back center seam. The skirt sits above natural waistline, the length is at center of mid-calf, ease around waist is approx.  $\frac{5}{8}$ " , ease around hips approx. 1.5" depending on the size.

**Recommendations on fabric:** wool or semi-wool, dress fabric, suiting fabric, bottom weight woven fabric.

**You will also need:** fusible interfacing, 1 zipper (the length in cm and inches is mentioned on the pattern piece, 2 hooks and eyes.

### Seam allowances:

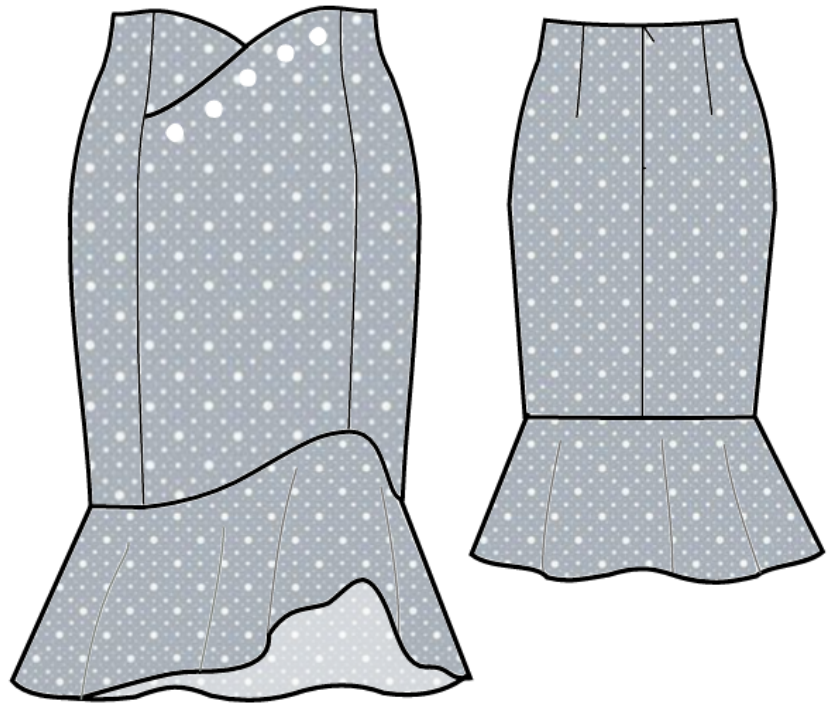
If the pattern has double contour the seam allowances are included and are as follows:  $\frac{1}{2}$  inch on all seams, 1.5 inch on hem of skirt,  $\frac{5}{8}$  inch on center back seam for zipper.

**Attention!** Seam allowances are NOT included by default and need to be added when laying out and cutting details if your pattern has single contour.

### Fabric requirements:

To estimate fabric requirements, get a free preview for the pattern in your size at [www.Lekala.net](http://www.Lekala.net) and use [Online Fabric Estimator](#). Alternatively you may print all the paper patterns and lay them out at the width of fabric you plan to use (usually 44 inches to 60 inches) to see how much fabric you will need. Don't forget to count pair parts and symmetrical parts.

When sewing the garment, pay attention to notches, they must match up.

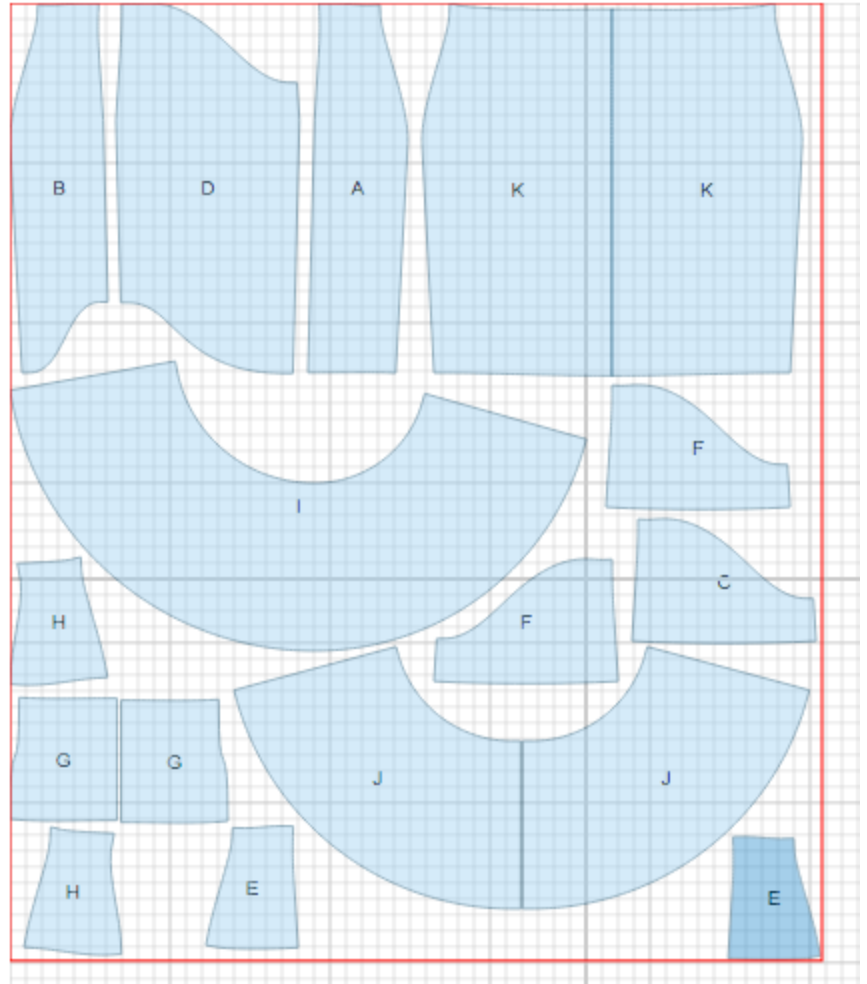


### CUTTING:

Lay pattern pieces out using the straight of grain line. Some pieces may be cut on the fold. This is noted on the pattern piece. Mark all notches and other design features such as darts, pleats etc. from the pattern onto your fabric.

### Main fabric:

1. Center front - cut 1 ( D )
2. Left Side Front - cut 1 ( B )
3. Right Side Front - cut 1 ( A )
4. Right Center Front - cut 1 ( F )
5. Right Center Front Facing - cut 1 ( F )
6. Front Side Facing - cut 2 ( E )
7. Left Center Front Facing - cut 1 ( C )
8. Back Center Facing - cut 2 ( G )
9. Back Side Facing - cut 2 ( H )
10. Front Flounce - cut 1 ( I )
11. Back Flounce - cut 1 on fold ( J )
12. Back - cut 2 ( K )



### Fusible interfacing:

1. Right Center Front Facing - cut 1 ( F )
2. Front Side Facing - cut 2 ( E )
3. Left Center Front Facing - cut 1 ( C )
4. Back Center Facing - cut 2 ( G )
5. Back Side Facing - cut 2 ( H )

\* The capital letters in brackets correspond to pattern blocks as seen in Online Fabric Estimator and in sample layouts on the right.

---

## INSTRUCTIONS:

Important: you may choose to install zipper in back seam, or make buttoned closure in the front. If you install zipper in back seam, you may skip making buttonholes on left side front, if you prefer a buttoned closure, skip installing zipper in the back and sew pieces together instead.

1. Sew darts on Backs. Press depths towards center.
2. Serge center back edges separately.
3. Pin together Right Back and Left Back. Sew center back seam from notch for zipper down to bottom.
4. Press Back center seam open, including opening for zipper. Sew in lapped zipper according to zipper instructions that come with the packet.
5. Apply fusible interfacing to Front Facings and Back facings.
6. Serge edges on fronts, backs and facings.
7. Sew Back Side Facings to Back Center Facings, press seams open. Sew Left Side Front to Center Front, press seam open. Sew Left Center Facing to left Front Side Facing, press seam open. Sew Left Front Facings to Left Back Facing (left side seam of facings), press seam open. Sew Left Side Front to Left Back, press seam open.
8. Pin Back Side Facing to upper edge of Left Back and Left Front, right sides together, matching side seams. The seam allowances should line up with the lapped zipper. Sew, clip into curves and trim seam. Turn facing toward inside and press.
9. Pin Right Center Front facing to upper edge of Right Center Front, right sides together, matching side seams. Sew, clip into curves and trim seam. Turn facing toward inside and press.

- 
10. If you have chosen to make button closure, make three buttonholes for the center and two lower buttons according to markings on Left Side Front. Place Right Center Front under Left Side Front, right sides facing you, matching notches and center front. Treat as one piece (Center Front) in the future. If you have chosen to install a zipper in back seam, Place Right Center Front under Left Side Front, right sides facing you, matching notches and center front. Topstitch along lower part of Left Side Front, connecting the two pieces. Treat as one piece (Center Front) in the future.
  11. Pin Right Front to Center Front, right sides together. Sew and press open.
  12. Sew Right Center Facing to right Front Side, press seam open.
  13. Sew Right Front Facings to Right Back Facings (right side seam of facings), press seam open.
  14. Sew Right Front to Right Back, press seam open.
  15. Pin Right facing to upper edge of Right Back and Right Front, right sides together, matching side seams. The seam allowances should line up with the lapped zipper. Sew, clip into curves and trim seam. Turn facing toward inside and press.
  16. Fasten facings to seam allowances along side seams. Fasten short end of right front facing to seam of left side facing.
  17. Fasten short ends of facings to zipper tape. Sew hooks and eyes near waist on the inside of skirt.
  18. Sew side seams on back flounce and front flounce.
  19. Pin flounce to hem of skirt, matching notches, and sew. Serge and press seam towards bottom.
  20. Serge lower edge of flounce, turn under, press, and slip stitch.

TECHNICAL DRAWING:

