

Recommendations on fabric: heavy-weight natural or mixed stretch-knit fabric.

You will also need: stretchy fusible interfacing, shoulder pads, 2 buttons, knit bias tape of contrast colour (length is mentioned on upper sleeve pattern piece).

Seam allowances: hems – 0.7 cm, other seams – 0.7 cm.

Note on seam allowances:

- If the pattern has double contour the seam allowances are included. They are 1 cm unless specified otherwise.
- If the pattern has single contour, the seam allowances are NOT included and need to be added when laying out the pattern.

Note on length of fabric:

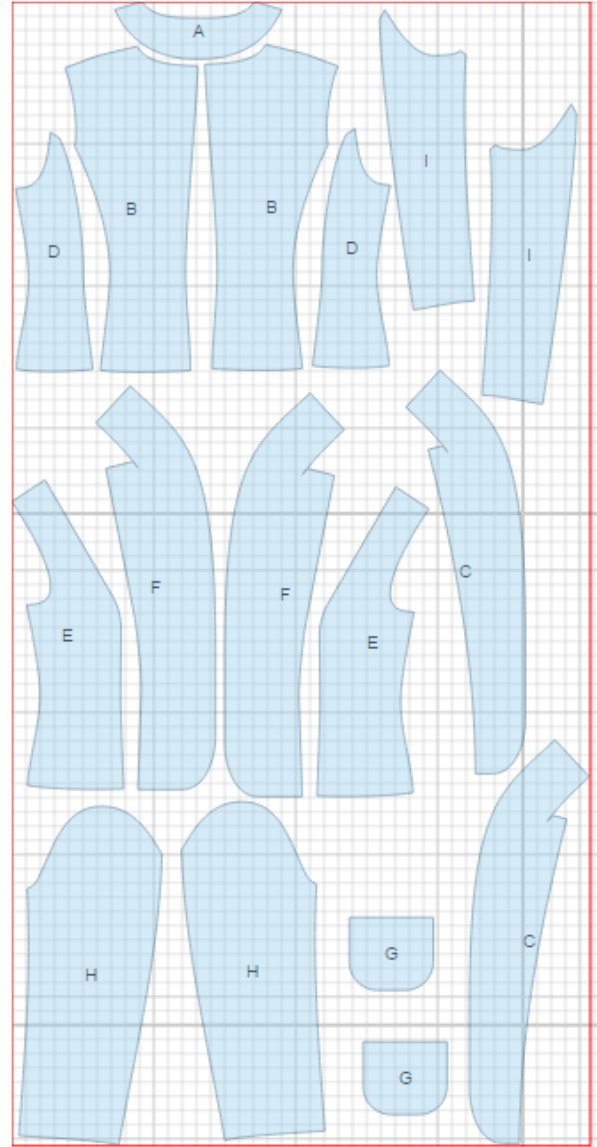
Attention! The amount of fabric needed for your pattern is not included. It will depend on the selected pattern size, the width, and design of the fabric you plan to use. First, print all the paper patterns and lay them out at the width of fabric you plan to use (usually from 90 to 150 cm). Measure how much fabric you will need. Don't forget to account for pieces that need to be cut multiple times and pieces that are cut on the fold.



CUTTING:

Main fabric:

1. Back neck facing - cut 1 (A)
2. Center back - cut 2 (B)
3. Front facing - cut 2 (C)
4. Side back - cut 2 (D)
5. Side front - cut 2 (E)
6. Center front - cut 2 (F)
7. Pocket - cut 2 (G)
8. Upper sleeve - cut 2 (H)
9. Lower sleeve - cut 2 (I)



Fusible interfacing:

1. Front facing - cut 2 (C)
2. Back neck facing - cut 1 (A)

Advice: Knit fabric pieces are sewn together with special elastic or narrow zig-zag stitch. Seam allowance on hem is stitched with twin needles to save stretchiness. Pieces can also be sewn together with 3 or 4 – thread serger. When serging, cut seam allowances to 0.6 – 0.8 cm.

INSTRUCTIONS:

1. Apply fusible interfacing. Cut a strip from fusible interfacing and apply along edge of back neckline.
2. Sew side front to center front. Serge seams and press towards center. Sew bias tape to upper edge of pocket (pin bias tape to edge from the right side and sew, fold bias tape onto wrong side and topstitch onto garment along fold line). Mark the position of pocket and topstitch onto front.
3. Sew darts on center backs. Sew side backs to center backs. Serge seams and press towards center.. Sew center back seam. Serge seam and press towards left side. Sew center front collar seam. Press seam open. Sew shoulder and side seams of jacket. Press seams open. Clip into seam allowance of shoulder seam on front and sew collar into back neckline. Press seam open.
4. Sew back neck facing to front facings.. Sew collar seam. Press seam open.. Clip into seam allowance on corner of facing and sew collar into back neck facing.. Press seam open. Serge outer edges.
5. Pin facing to jacket wrong sides together, baste, matching outer edges. From the front side, sew bias tape along outer edge of center front, collar and lower edge of jacket. Fold bias tape to underside of garment and topstitch to garment along fold line.
6. Sew and press open elbow sleeve seam of upper and lower sleeve. Serge and press seam towards upper sleeve. Sew sleeve seam.. Serge and press seam towards upper sleeve. Sew bias tape to lower edge of front side of sleeve. Fold bias tape to underside, and topstitch to garment along fold line.
7. Sew sleeves into armholes matching notches, and adjusting ease along sleeve cap. Sew in shoulder pads.
8. Make buttonholes on right front, sew buttons on left front.

TECHNICAL DRAWING:

