

Sewing Pattern — Dress 4393

Recommendations on fabric: natural or mixed, well draping medium stretch knit fabric.

You will also need: 1 decorative button.

If the pattern has a double line around it, the seam allowances are included.

Note: By default, seam allowances are NOT included (single line) and will need to be added when laying out and cutting details.

Seam allowance: hem of blouse – 1.5 cm, all other seams – 0.8 cm.

Attention! First of all, please print all the paper patterns and lay them out at the width of fabric you plan to use (usually from 90 to 150 cm) to see how much fabric you will need. Don't forget to take into account pieces to be duplicated or cut on a fold.

When sewing the garment, pay attention to notches. They must match up with corresponding pieces.

CUTTING:

The word, “beam” used on some patterns means “straight of grain”. Some pieces will be cut on the fold, this is noted on the pattern piece. Mark all notches and other design features such as darts, pleats etc. from the pattern onto your fabric.

Fabric:

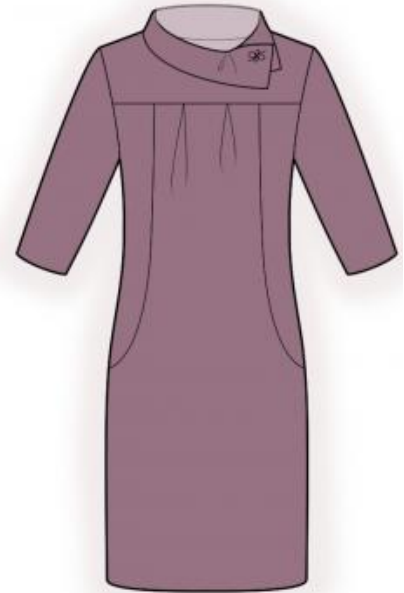
1. Back yoke – cut 1
2. Back – cut 2
3. Front yoke – cut 1
4. Central front – cut 1 on fold
5. Side front – cut 2
6. Sleeve – cut 2
7. Collar – cut 1
8. Pocket bag – cut 2

Advice:

Knit fabric pieces are sewn together with special stretch-stitch or narrow zig-zag stitch. Seam allowance on hem is stitched with twin needles to save stretchiness. Pieces can also be sewn together with 3 or 4 – thread serger. When serging, cut seam allowances to 0.6 – 0.8 cm.

INSTRUCTIONS:

1. Sew pocket bag to central front. Serge seam allowances, turn pocket bag to wrong side, press. Sew side and central fronts, sewing pocket bags at the same time. Serge seam allowances and press them toward center.



2. Sew center edge of back. Serge seam allowance and press to left.
3. Make and fasten two counter pleats on upper edge of central front. Sew yoke to front, serge seam allowance and press it upwards.
4. Sew yoke to back. Serge seam allowance and press it upwards.
5. Sew side and shoulder edges. Serge seam allowances and press them to back.
6. Fold collar in half lengthwise right sides together. Stitch one end of collar. Stitch another end to arrow Clip allowance near the notch. Trim corners and turn collar right side out. Sew collar into neckline.
7. Sew sleeve edge. Serge seam allowances and press to back. Sew sleeves into armholes according to notches. Serge seam allowances.
8. Serge hem of dress and hem of sleeves turn to wrong side and topstitch.
9. Straighten all part of collar and sew decorative button. .

TECHNICAL DRAWING:

