

Recommendations on fabric: natural or mixed, medium to high stretch knit fabric.

You will also need: knit bias tape, diamond shape decoration.

Seam allowances: hem of blouse – 2.0 cm; front and back neckline — 1.2 cm; upper seam allowance of inner part — 1.2 cm; all other seams - 0.7 cm.

Note on seam allowances:

- If the pattern has double contour the seam allowances are included. They are 1 cm unless specified otherwise.
- If the pattern has single contour, the seam allowances are NOT included and need to be added when laying out the pattern.

Note on length of fabric:

Attention! The amount of fabric needed for your pattern is not included. It will depend on the selected pattern size, the width, and design of the fabric you plan to use. First, print all the paper patterns and lay them out at the width of fabric you plan to use (usually from 90 to 150 cm). Measure how much fabric you will need. Don't forget to account for pieces that need to be cut multiple times and pieces that are cut on the fold.

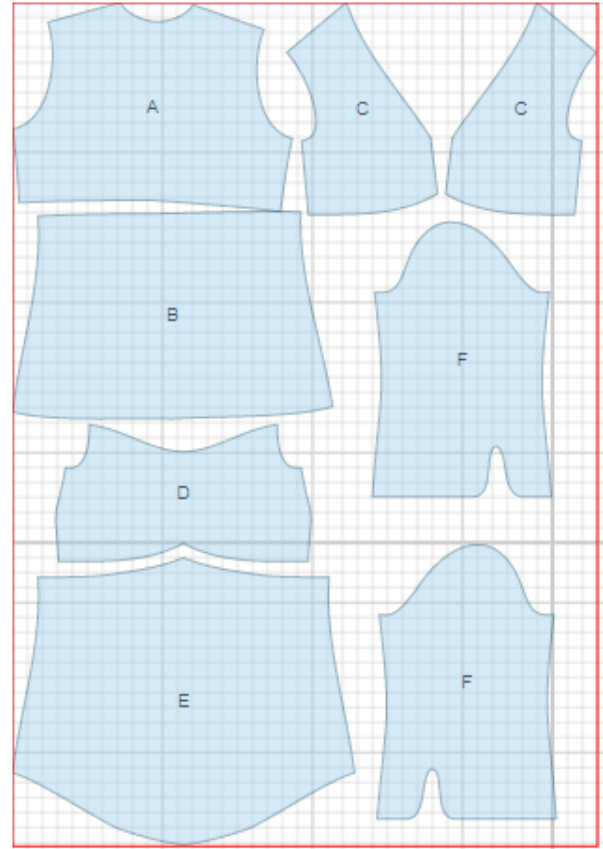


CUTTING:

Main fabric:

1. Upper back - cut 1 (A)
2. Lower back — cut 1 (B)
3. Upper front — cut 2 (C)
4. Inner front — cut 1 (D)
5. Lower front—cut 1 (E)
6. Sleeve — cut 2 (F)

Advice: Knit fabric pieces are sewn together with special elastic or narrow zig-zag stitch. Seam allowance on hem is stitched with twin needles to save stretchiness. Pieces can also be sewn together with 3 or 4 – thread serger. When serging, cut seam allowances to 0.6 – 0.8 cm.



INSTRUCTIONS:

1. Sew upper back to lower back. Serge and press seam towards lower back.
2. Sew darts on inner front (if desired, cut depths off with serger). Serge top edge, turn under, and topstitch.
3. Sew shoulder seams. Serge and press seam toward back. Serge neckline edge. Turn under, and topstitch.
4. Sew center seam of upper fronts. Make a gathering stitch along the seam and gather fullness. Pin upper front onto inner front and baste on lower edge and armhole edge. Sew lower front to upper front, making free pleats on lower front. Serge seam allowance.
5. Sew side seams. Serge and press seam toward back.
6. Finish lower edge of sleeve with bias tape. Sew sleeve seam. Serge and press seam. Sew sleeve into armhole, matching notches. Serge seam allowance.
7. Serge bottom edge of garment, press onto wrong side, and topstitch.

TECHNICAL DRAWING:

