

Recommendations on fabric: natural or mixed well-draping fabric suitable for jacket.

You will also need: interfacing; lining; 3 buttons; shoulder pads; sleeve heads.

Seam allowances: all seams -1 cm, on hem of sleeve - 3.0 cm .

**Note on seam allowances:**

- If the pattern has double contour the seam allowances are included. They are 1 cm unless specified otherwise.
- If the pattern has single contour, the seam allowances are NOT included and need to be added when laying out the pattern.

**Note on length of fabric:**

*Attention! The amount of fabric needed for your pattern is not included. It will depend on the selected pattern size, the width, and design of the fabric you plan to use. First, print all the paper patterns and lay them out at the width of fabric you plan to use (usually from 90 to 150 cm). Measure how much fabric you will need. Don't forget to account for pieces that need to be cut multiple times and pieces that are cut on the fold.*



## CUTTING:

### Main fabric:

1. Back neck facing – cut 1 (A)
2. Side back – cut 2 (B)
3. Center back – cut 2 (C)
4. Side front - cut 2 (D)
5. Center front - cut 2 (E)
6. Lower back - cut 2 (F)
7. Lower front - cut 4 (G)
8. Front facing - cut 2 (H)
9. Left collar - cut 2 (I)
10. Right collar - cut 2 (J)
11. Upper sleeve – cut 2 (K)
12. Lower sleeve – cut 2 (L)

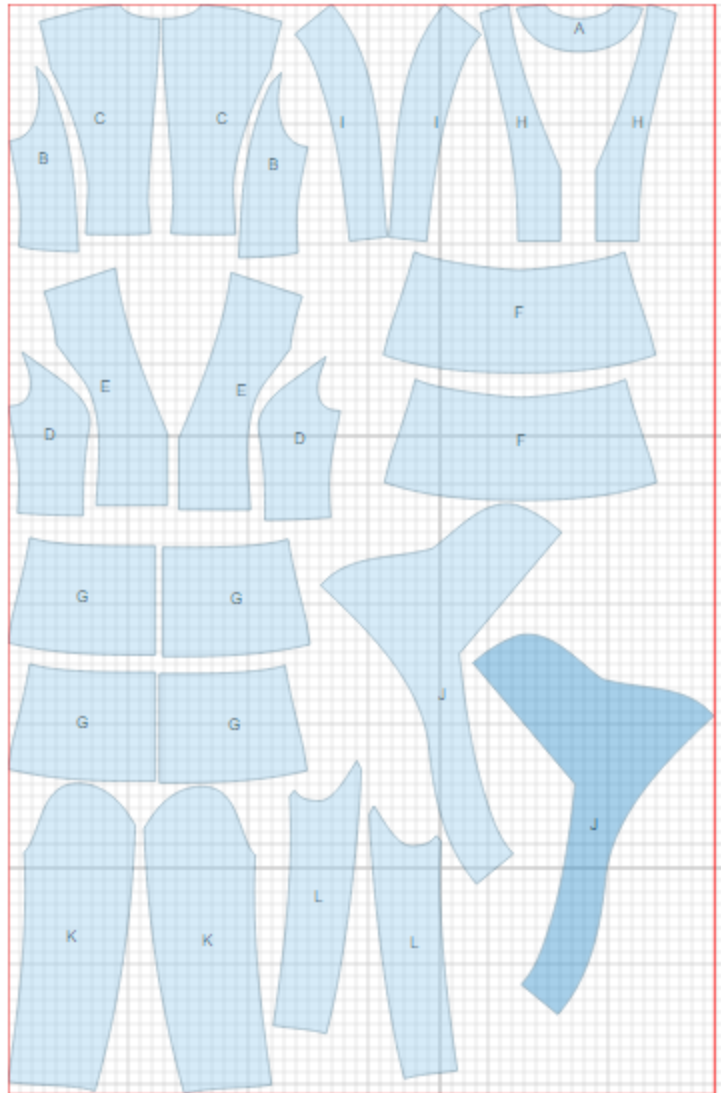
### Lining:

1. Side back – cut 2 (B)
2. Center back – cut 2 (C)
3. Side front - cut 2 (D)
4. Center front - cut 2 (E)
5. Upper sleeve – cut 2 (K)
6. Lower sleeve – cut 2 (L)

\*ATTENTION: Lining is cut using main fabric patterns excluding the width of facing. Add a pleat on lining.

### Fusible interfacing:

1. Center back – cut 2 (C)
2. Left collar - cut 1 (I)
3. Right collar - cut 1 (J)
4. Front facing - cut 2 (H)
5. Back neck facing – cut 1 (A)



## INSTRUCTIONS:

1. Apply interfacing to listed pieces, as well as to hem of the garment and hem of sleeves.
2. Sew and press darts towards center on back. Sew side backs to center backs and press seams open. Sew center back seam and press seam open. Stitch lower back to back.
3. Sew side fronts to center fronts and press seams open. Sew lower fronts to fronts.
4. Sew shoulder and side seams of jacket. Press seams open.
5. Sew left collars to right collars along center seams. Press seams open. Pin collars right sides together and sew outer seam. Trim seam allowances in corners, and clip into curves. Turn collar right side out, straighten and press. Sew collar into neckline and right center front.
6. Sew elbow seam of seam. Press seam open. Press hem of sleeve. Sew front sleeve seam. Press seam open.
7. Make a gathering stitch along sleeve cap to adjust ease. Sew sleeves into armholes matching notches, and adjusting ease. Sew in shoulder pads and sleeve heads.
8. Sew shoulder seams of back to neckline facing and front facings. Press seams open. Sew and press apart side edges of inner details of lower back parts and of front part.
9. Sew lining together, leaving a slit open in front left seam of sleeve. Sew lining to to facing along outer edges. Sew lower back and front to lining.
10. Pin facing onto right side of front right sides together. Sew center front, , neckline, and hem of the garment. Trim corners and clip into curves. Turn jacket right side out, straighten and press seams.
11. Sew lining to hem of sleeve. Sew slit in sleeve closed. Topstitch collar and center front. Tack jacket and lining together along seam of lower section..
12. Make buttonholes on right front, sew buttons on left front.
13. Make pleats on right collar.

Advice: wear the jacket with belt.

TECHNICAL DRAWING:

