

Sewing Pattern — Dress 4135

Recommendations on fabric: dress fabric of two colors

You will also need: fusible interfacing; satin for the bow.

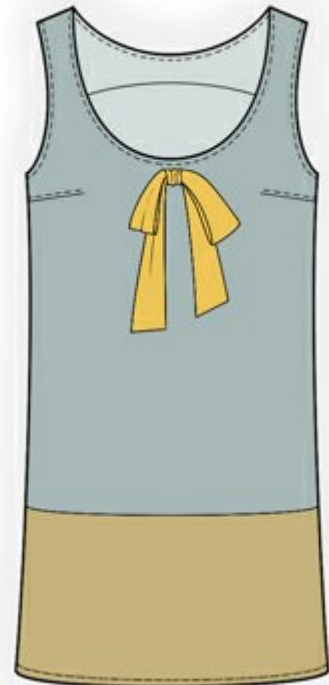
If the pattern has a double line around it, the seam allowances are included.

Note: By default, seam allowances are NOT included (single line) and will need to be added when laying out and cutting details.

Seam allowance: on hem of the garment – 3 cm, all other seams – 1cm.

Attention! First of all please print all the paper patterns and lay them out at the width of fabric you plan to use (usually from 90 to 150 cm) to see how much fabric you will need. Don't forget to take into account pieces to be duplicated or cut on a fold.

When sewing the garment, pay attention to notches, they must match up with corresponding pieces.



CUTTING:

(On the pattern pieces, “beam” means straight of grain. Lay out your pieces accordingly. Some pieces will be cut on the fold. This is noted on the pattern piece. Mark all notches and other design features such as darts, pleats etc. from the pattern onto your fabric.)

Darts: The fold of the dart is always pressed toward the center of your garment, or down toward the hem.

Fabric 1:

1. Back - cut 1
2. Front - cut 1 on fold
3. Back neck/arm facing – cut 1
4. Front neck/arm facing– cut 1

Fabric 2:

1. Back bottom- cut 1
2. Front bottom- cut 1
3. Bow - cut 1

Interfacing:

1. Back neck/arm facing– cut 1
2. Front neck/arm facing– cut 1

Satin:

1. Bow – cut 1

INSTRUCTIONS:

1. Apply fusing to facings.

2. Sew bust darts on front and press toward hem. Sew sides together. Serge seam and press toward back.

3. Sew front facing to back facing at side edges. Serge bottom edge. Place facing, right sides together, to garment. Sew armhole edges and neck edges. The shoulders are left open. Clip into curves, turn and press. Turn the edges of back shoulder opening to the inside of the opening. Funnel the front shoulder edges inside the back shoulder opening. Put your hand between the facing and the garment and grab the shoulder edges and pull it through. Line up seams, pin and sew. Here is an excellent video on how to sew this type facing to a garment.

<https://www.youtube.com/watch?v=jdiN4Y1bACw> .Turn and press.

4. Topstitch neck and armholes if desired.

5. Sew bottom front and bottom back together. Serge seams and press toward back. Sew to upper part. Serge the seam and press upwards.

6. Turn hem of the garment inside first at 1 cm, then again at 2 cm and topstitch.

7. Fold the bow in half lengthwise, right sides together, and sew ends and long side, leaving an opening for turning 15 cm long on the long side. Turn the bow right side out, straighten and press. Slipstitch the opening closed. Attach the bow as shown on technical drawing. Tie ends.

TECHNICAL DRAWING:

