

## Sewing Pattern — Tunic 4139

Recommendations on fabric: light-weight natural/mixed blouse fabrics

You will also need: elastic thread; 2 buttons; bias tape

If the pattern has a double line around it, the seam allowances are included.

**Note:** By default, seam allowances are NOT included (single line) and will need to be added when laying out and cutting details.

Seam allowance: on hem — 4 cm, all other seams 1 cm

Attention! First of all, please print all the paper patterns and lay them out at the width of fabric you plan to use (usually from 90 to 150 cm) to see how much fabric you will need. Don't forget to take into account pieces to be duplicated or cut on a fold.

When sewing the garment, pay attention to notches, they must match up with corresponding pieces.

### **CUTTING:**

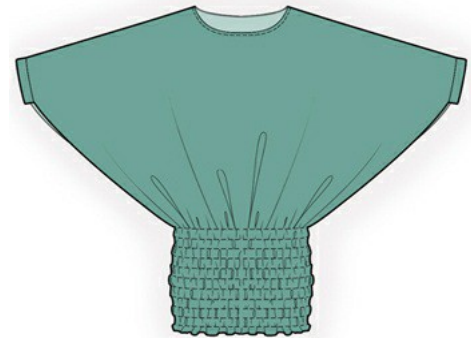
The word, “beam” used on some patterns means “straight of grain”. Some pieces will be cut on the fold, this is noted on the pattern piece. Mark all notches and other design features such as darts, pleats etc. from the pattern onto your fabric.

### **Advice:**

Knit fabric pieces are sewn together with special stretch-stitch or narrow zig-zag stitch. Seam allowance on hem is stitched with twin needles to save stretchiness. Pieces can also be sewn together with 3 or 4 – thread serger. When serging, cut seam allowances to 0.6 – 0.8 cm.

### Fabric:

1. Front – cut 2
2. Back – cut 2
3. Cuff – cut 2



## **INSTRUCTIONS:**

1. Sew right shoulder seam. Serge and press toward back.
2. Cut bias tape the length equal to neckline, the width is 4 cm. Fold in half lengthwise and press. Pin bias tape, right sides together, along neckline edge, and sew. Turn bias tape onto wrong side and topstitch at 0.1 cm from bias tape fold.
3. Sew left shoulder seam. Serge and press toward back.
4. Serge side edges/sleeve edges separately. Sew side/sleeve seam, stopping at mark for sleeve opening. Press seam apart.
5. Topstitch along the sleeve slit at 0.1 cm from the edge. Fold cuffs in half, right sides together, and sew short sides and lap-over edge according to markers. Trim seam allowances in corners. Turn cuffs right side out and press. Sew outer side of cuff to sleeve. Turn inner cuff seam allowance under, and topstitch into connecting seam.
6. Serge bottom edge of garment, turn onto wrong side, and topstitch. Sew rows of stitches with elastic thread according to markers.
7. Make buttonholes on cuffs and sew buttons.

## **TECHNICAL DRAWING:**

