

Note: this blouse is for height 134-170 cm

Recommendations on fabric: natural or mixed blouse fabric.

You will also need: 4 buttons, fusible interfacing, elastic.

Seam allowances: hem of blouse – 1.5 cm, other seams – 1 cm.

Note on seam allowances:

- *If the pattern has double contour the seam allowances are included. They are 1 cm unless specified otherwise.*

- *If the pattern has single contour, the seam allowances are NOT included and need to be added when laying out the pattern.*

Note on length of fabric:

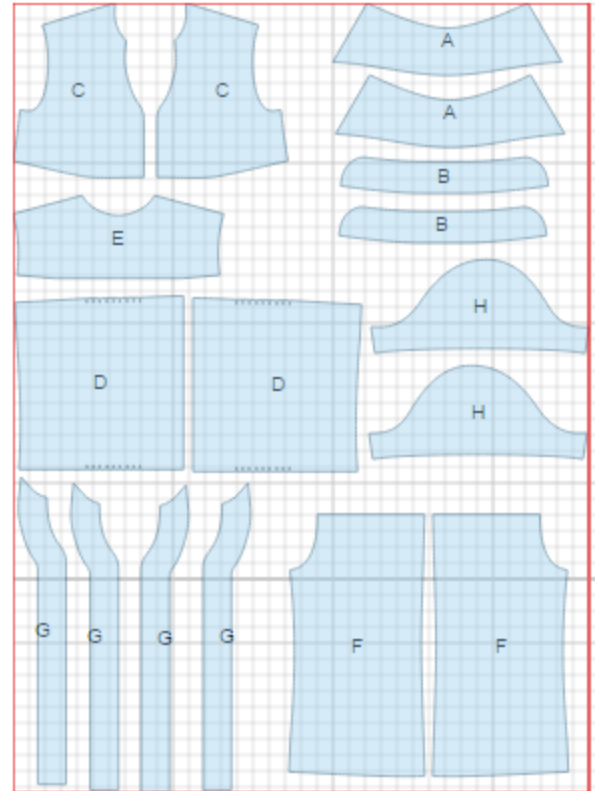
Attention! The amount of fabric needed for your pattern is not included. It will depend on the selected pattern size, the width, and design of the fabric you plan to use. First, print all the paper patterns and lay them out at the width of fabric you plan to use (usually from 90 to 150 cm). Measure how much fabric you will need. Don't forget to account for pieces that need to be cut multiple times and pieces that are cut on the fold.



CUTTING:

Main fabric:

1. Collar - cut 2 (A)
2. Stand part of collar - cut 2 (B)
3. Upper front - cut 2 (C)
4. Lower front - cut 2 (D)
5. Back yoke - cut 1 (E)
6. Back - cut 2 (F)
7. Placket - cut 4 (G)
8. Sleeve - cut 2 (H)



Fusible interfacing:

1. Collar - cut 1 (A)
2. Stand part of collar - cut 1 (B)
3. Placket - cut 2 (G)

INSTRUCTIONS:

1. Apply fusible interfacing to listed pieces.
2. Place collars right sides together and sew outer edge. Grade seam. Turn collar right side out, straighten and press. Place stand parts of collar right sides together, insert collar between them, match notches and sew continuing stitch on stand part ends. Start and finish stitch exactly at stand collar connecting seam. Turn ready collar out and press.
3. Make and sew pleats on lower fronts according to marking. Folds are directed towards side seams. Press pleats.
4. Make a gathering stitch on lower edge of upper fronts between marks, and gather fullness. Sew upper fronts to lower fronts. Serge and press seams upwards.
5. Place plackets right sides together and sew on outer edge. Turn plackets right sides out and press. Sew outer packet to front. Press seam towards placket. Turn the edge of inner placket under and topstitch into connecting seam. Sew second placket to second front the same way.
6. Sew darts on backs. Press bulk towards center seam. Sew center back seam. Serge and press seam. Sew back yoke to back. Serge and press seam towards yoke.
7. Sew shoulder and side seams. Serge and press seams towards back.
8. Sew outer collar into neckline. Turn the edge of inner collar under and topstitch into connecting seam.
9. Sew and serge sleeve seam. Finish lower edge of sleeve with rolled seam. Sew elastic at 1.5 cm from lower edge. Length of elastic is 2 cm shorter than upper arm circumference. Make a gathering stitch on sleeve cap and gather fullness. Sew sleeves into armholes. Serge and press seams towards sleeves.
10. Serge lower edge of blouse, turn under and topstitch.
11. Make buttonholes on right front. Sew buttons on left front.

TECHNICAL DRAWING:

