

Sewing Pattern — Dress 7198

Recommended for girl's height 116-152 cm, chest 56-76cm

Recommendations on fabric: dress fabric of natural/mixed fibers

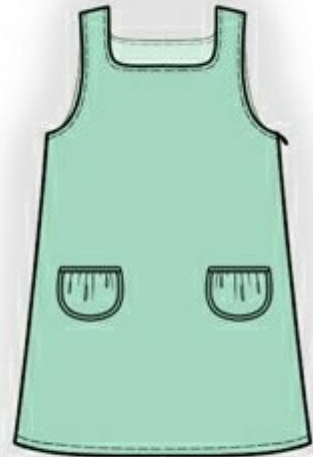
If the pattern has a double line around it, the seam allowances are included.

Note: By default, seam allowances are NOT included (single line) and will need to be added when laying out and cutting details.

Seam allowance: on hem of the garment – 2 cm; on edges of pocket – 0 cm; all other seams – 1cm

Attention! First of all, please print all the paper patterns and lay them out at the width of fabric you plan to use (usually from 90 to 150 cm) to see how much fabric you will need. Don't forget to take into account pieces to be duplicated or cut on a fold.

When sewing the garment, pay attention to notches, they must match up with corresponding pieces.



CUTTING:

The word, “beam” used on some patterns means “straight of grain”. Some pieces will be cut on the fold, this is noted on the pattern piece. Mark all notches and other design features such as darts, pleats etc. from the pattern onto your fabric.

Fabric:

1. Center back – cut 2
2. Side back – cut 2
3. Front – cut 1
4. Front facing – cut 1
5. Back facing – cut 1
6. Tie – cut 2
7. Pocket – cut 2

Interfacing:

1. Front facing – cut 1
2. Back facing– cut 1

INSTRUCTIONS:

1. Apply interfacing to facings.
2. Fold ties in half lengthwise, right sides together, and sew long and one short sides. Trim seam allowances in corners, turn ties right side out, press. Topstitch at 0.1 cm from the edge.
3. Sew side back to center back, inserting tie. Serge and press seam toward side.
4. Cut a strip of bias tape from main fabric 4 cm wide and length equal to outer edge of pocket (length shown on front pattern). Press the bias tape in half lengthwise, wrong sides together, unfold and press edges toward center. Sew outer edges of pocket with bias tape. Make a gathering stitch along top edge of pocket and gather fullness. Cut bias tape for upper edge. Sew to upper edge. Pin pocket on front according to markers and topstitch into bias tape seam.
5. Sew shoulder seams, serge and press toward back. Sew right side seam, serge and press toward back. Serge left side edges separately, sew from zipper mark to hem. Press seam apart, including opening for zipper. Sew zipper in.
6. Sew shoulder and right side seams of back and front facings. Press seams apart. Serge outer edge of the facings. Pin facing to garment, right sides together, and sew front and back neckline edge. Clip into curves, turn facing onto wrong side. Sew armhole in two steps: first back armhole, then front armhole. If you are unfamiliar with the two-step process, here is a helpful [video tutorial](#). Turn the facing onto wrong side and press. Slipstitch seam allowances of facing left side edge to zipper tape. Topstitch along neckline and armholes.
7. Serge lower edge of garment, press onto wrong side and topstitch.

TECHNICAL DRAWING:

