

Recommendations on fabric: durable, wearproof fabric (cotton+polyester).

You will also need: 1 long zipper; 4 zippers for pockets and trouser slits, sticky tape.

Seam allowances: all seams - 1 cm, edges for zipper - 2 cm.

Note on seam allowances:

- If the pattern has double contour the seam allowances are included. They are 1 cm unless specified otherwise.
- If the pattern has single contour, the seam allowances are NOT included and need to be added when laying out the pattern.

Note on length of fabric:

Attention! The amount of fabric needed for your pattern is not included. It will depend on the selected pattern size, the width, and design of the fabric you plan to use. First, print all the paper patterns and lay them out at the width of fabric you plan to use (usually from 90 to 150 cm). Measure how much fabric you will need. Don't forget to account for pieces that need to be cut multiple times and pieces that are cut on the fold.

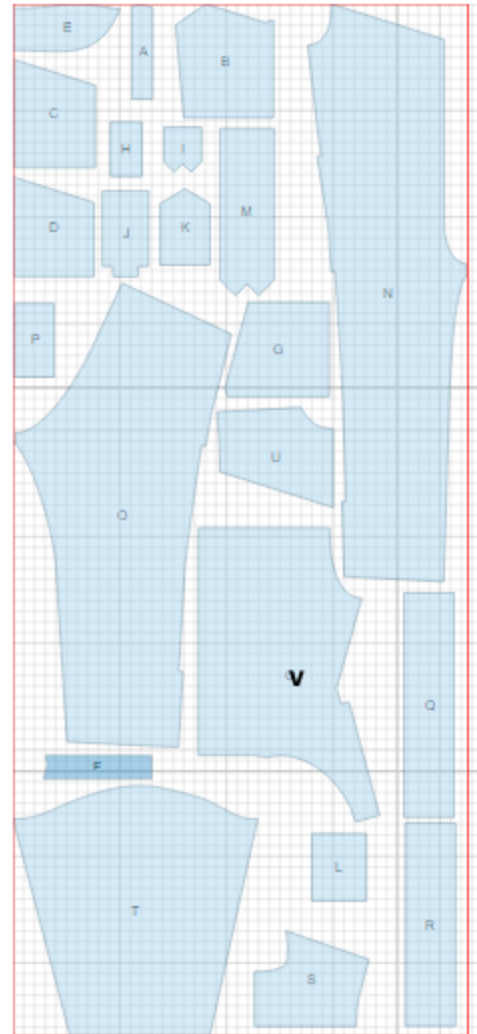


CUTTING:

Main fabric:

1. Upper pocket placket – cut 1 (A)*
2. Upper pocket – cut 2 (B)
3. Big pocket bag / upper pocket sacking_1 – cut 2 (C)
4. Small pocket bag / upper pocket sacking_2 - cut 2 (D)
5. Collar– cut 2 on fold (E)
6. Leg pocket placket — cut 1 (F)*
7. Leg pocket — cut 4 (G)
8. Sleeve pen pocket - cut 1 (H)
9. Knife pocket flap - cut 1 (I)
10. Knife pocket - cut 1 (J)
11. Calculator frame – cut 1 (K)
12. Sleeve pocket - cut 1 (L)
13. Sleeve cuff- cut 2 (M)
14. Front part - cut 2 (N)
15. Lower back - cut 2 (O)
16. Name frame - cut 1 (P)
17. Waistband - cut 1 (Q)
18. Trouser cuff - cut 2 (R)
19. Back yoke - cut 1 on fold (S)
20. Sleeve - cut 2 (T)
21. Front yoke - cut 2 (U)
22. Upper back - cut 1 on fold (V)

**optional pieces*



INSTRUCTIONS:

1. Make pleats on upper back and topstitch.
2. Sew back yoke to back. Serge and press seam allowance toward yoke. Topstitch along seam.
3. Sew crotch seam of lower backs. Serge seam. Sew lower back to waistband, serge and press seam towards waistband. Sew upper back to waistband, serge and press seam towards waistband.
4. Sew front yokes to fronts. Serge and press seams towards yoke.
5. Serge seam allowances of patch pockets, pocket flaps and frames, turn under and topstitch.
6. Place sleeve pockets, bodice pockets, upper leg pockets, pen/knife pockets, calculator/name frames on corresponding pieces according to marking and topstitch. Topstitch knife pocket flap above pocket. Sew Velcro tape according to marking.
7. Cut slits on fronts for zippers. Turn edges under. Lay zipper underneath and topstitch on contour. Serge pocket bag edges. Sew pocket bags to zipper tape. Align edges of pocket bags and sew together.
8. Sew shoulder seams. Serge and press seams towards back. Topstitch along seam. Place collars right sides together and sew outer edge. Clip seam on curves, turn out, straighten and press. Sew outer collar to neckline.
9. Sew front crotch seam. Serge and press.
10. Serge center front edges for zipper. Turn under and press. Lay zipper tapes under the edges and topstitch on three sides. Turn seam allowances of inner collar under and topstitch into collar connecting seam inserting zipper ends between collars. Topstitch along outer edge of collar.
11. Sew side seams down to slits for zippers. Press seams open and serge. Lay zipper under seam allowances and topstitch on three sides.
12. Place side leg pockets on trousers according to marking and topstitch on three sides.
13. Sew inside leg seam. Serge and press toward back.
14. Fold trouser cuff in half lengthwise, right sides together, and sew short sides. Trim seams in corners, turn out and press. Sew cuff to lower edge of trouser, right side to wrong side of pant leg opening. Serge seam, press and fold cuff to the outside. Topstitch along fold and upper edge of cuff.

-
15. Sew sleeve seam. Fold sleeve cuff in half lengthwise right sides together and sew short ends. Clip seams in corners, turn cuff out, straighten and press. Topstitch along fold. Sew outer cuff to lower edge of sleeve. Serge and press seam towards cuff. Fold inner cuff seam allowance under, and topstitch along connecting seam. Sew Velcro tape according to marking.
16. Make a gathering stitch along sleeve cap to adjust ease. Sew sleeve into armhole adjusting ease on sleeve cap. Serge and press seam.
17. Sew elastic pieces from underneath at waistline level as shown in technical drawing.

TECHNICAL DRAWING:

